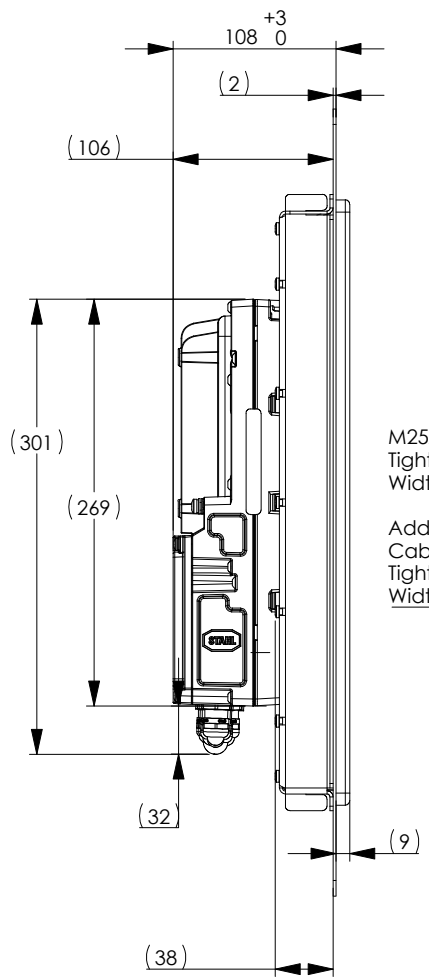
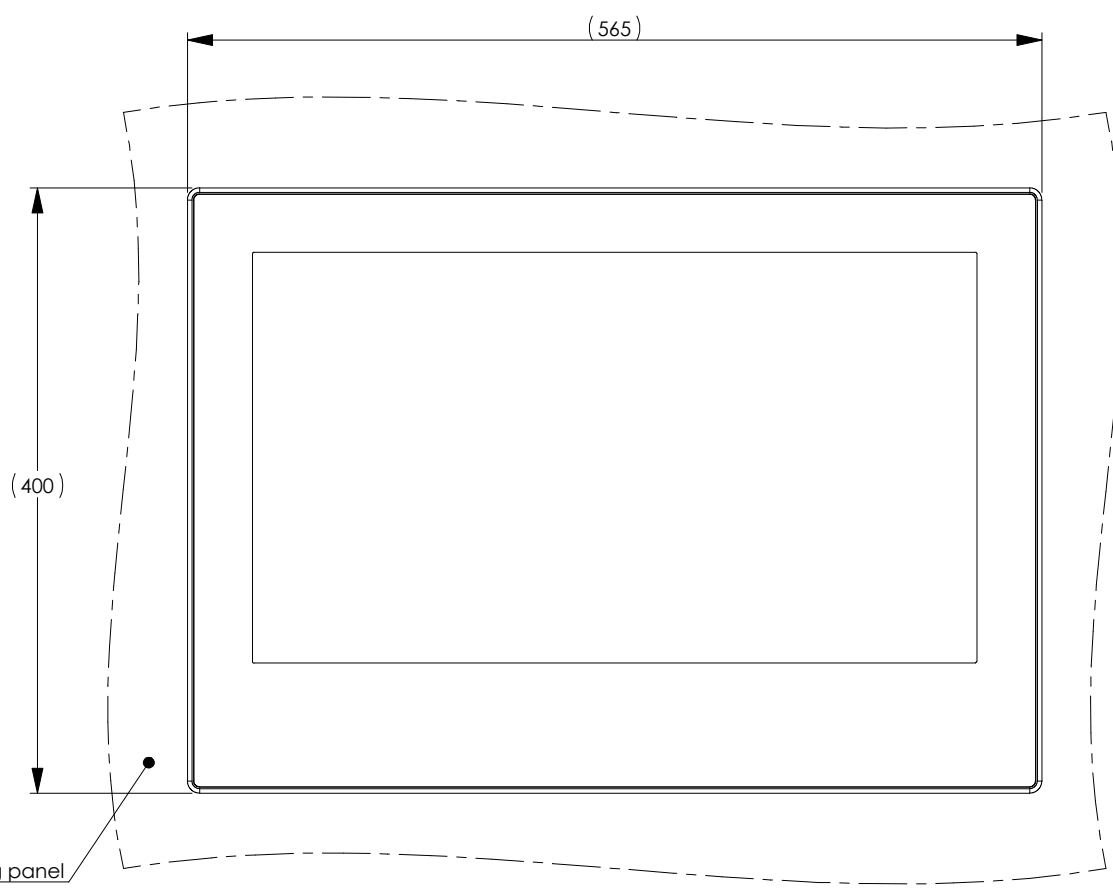


ORCA 22" Panelmount Device with E-Box PRO

xx9Axxxx1...

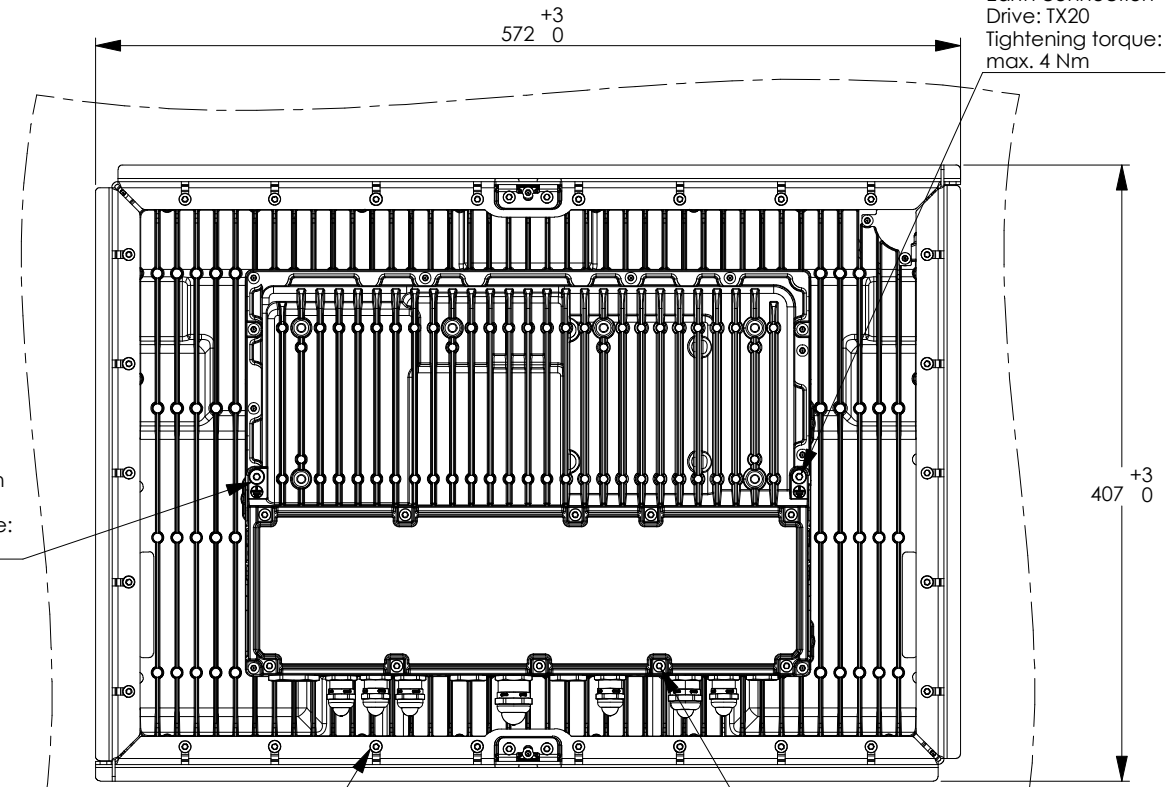
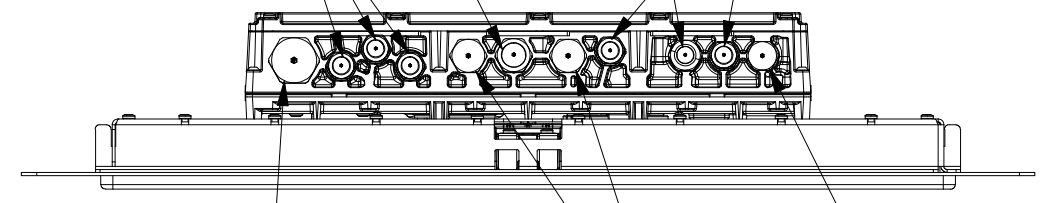
All rights reserved. Without our express consent this image may not be copied, made available to third parties or used in any other way not intended by the owner. State of the art - subject to technical or design alterations.

Alle Rechte vorbehalten ! Diese Zeichnung darf ohne unsere ausdrückliche Zustimmung weder vervielfältigt, noch Dritten zugänglich gemacht werden. Außerdem darf sie durch den Empfänger oder durch Dritte nicht in anderer Art und Weise mißbräuchlich verwendet werden. Stand der Technik - Technische bzw. konstruktive Änderungen vorbehalten.

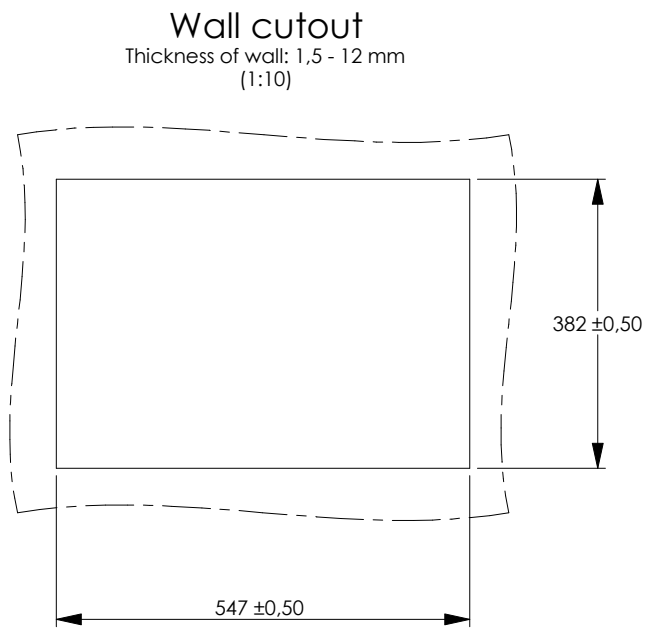
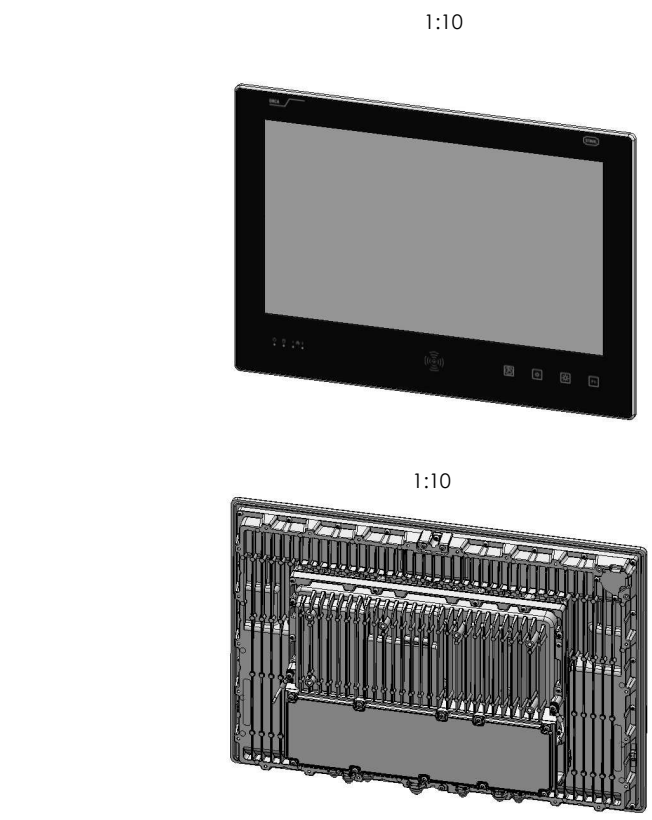


- 1x M20x1,5 Cable gland
Cable diameter range: 6 - 12 mm
Tightening torque: 8 Nm
Width across flats (AF): 22 mm
- 1x M16x1,5 Cable gland
Cable diameter range: 5 - 10 mm
Tightening torque: 5 Nm
Width across flats (AF): 20 mm
- 3x M16x1,5 Cable gland
Cable diameter range: 4 - 8 mm
Tightening torque: 6 Nm
Width across flats (AF): 19 mm and 17 mm
- 2x M16x1,5 Cable gland
Cable diameter range: 4 - 8 mm
Tightening torque: 6 Nm
Width across flats (AF): 19 mm and 17 mm

- M25x1,5 Blindplug
Tightening torque: 12 Nm
Width across flats (AF): 30 mm
- Additional cable gland M25x1,5 within delivery:
Cable diameter range: 14 - 18 mm
Tightening torque: 12 Nm
Width across flats (AF): 30 mm
- M16x1,5 Blindplug
Tightening torque: 6 Nm
Width across flats (AF): 19 mm
- 2x M20x1,5 Blindplug
Tightening torque: 8 Nm
Width across flats (AF): 22 mm



- 1x M4 for Earth connection
Drive: TX20
Tightening torque: max. 4 Nm
- 26x M4 for mounting frame
Drive: TX20
Tightening torque: 3,5 +0,5/-0 Nm
- 10x M4 screw for terminal lid
Drive: TX20
Tightening torque: 3,5 +0,5/-0 Nm



MATERIAL / FINISH:		UNLESS OTHERWISE SPECIFIED: DIMENSIONS ARE IN MILLIMETERS [inches]			R. STAHL HMI Systems GmbH Cologne - Germany www.stahl-hmi.de			
or depending on the order		TOLERANCES: DIN ISO 2768 mK DEBUR AND BREAK SHARP EDGES						
Rev.	Modification	Date	Drawn	Checked	SCALE: 1:5	Date	Drawn	Checked
					MAT.-NO.: -	30.11.2022	SL	DW
DRAWING NO. TITLE								
30601006 Rev00 E-Mx9A PRO Main Assembly								
WEIGHT:		SURFACE:		A3		SHEET 1 OF 1		