



- Use as terminal or control box
- Corrosion-resistant, lightweight, low maintenance due to glass fibre reinforced polyester resin
- Can be combined with high distribution thanks to modular structure of the enclosure

E4

MY R. STAHL 8146E



The R-STAHL Series 8146 Ex e enclosure offers reliable protection for the components installed in it for use as a terminal or control box. It is made of glass fibre reinforced polyester resin and is therefore robust, corrosion-resistant and needs very little maintenance. Thanks to its modular structure, you can combine it flexibly with larger units.

	IECEx / ATEX					
Zone	0	1	2	20	21	22
Installation in		•	•		•	•

Selection Table								
Silicone-free Ambient temperature		No -60 °C ... +100 °C -76 °F ... +212 °F						
Width	Width in inches	Height	Height, inches	Depth	Depth, inches	Product Type	Art. No.	Weight
112.55 mm	4.429 in	112.5 mm	4.429 in	91 mm	3.583 in	8146/-031	265980	1.05 kg
170 mm	6.693 in	112.5 mm	4.429 in	91 mm	3.583 in	8146/-041	265981	891 g
170 mm	6.693 in	170 mm	6.693 in	91 mm	3.583 in	8146/-051	268697	863 g
170 mm	6.693 in	170 mm	6.693 in	131 mm	5.157 in	8146/-052	269233	1.67 kg
227 mm	8.937 in	170 mm	6.693 in	131 mm	5.157 in	8146/-062	269234	2.13 kg
227 mm	8.937 in	112.5 mm	4.429 in	131 mm	5.157 in	8146/-242	269232	1.49 kg
340.5 mm	13.406 in	170 mm	6.693 in	91 mm	3.583 in	8146/-071	268698	2.24 kg
340.5 mm	13.406 in	170 mm	6.693 in	131 mm	5.157 in	8146/-072	269235	2.54 kg
340.5 mm	13.406 in	170 mm	6.693 in	150 mm	5.906 in	8146/-073	269238	2.59 kg
340.5 mm	13.406 in	170 mm	6.693 in	190 mm	7.48 in	8146/-075	269243	2.89 kg
340.5 mm	13.406 in	340.5 mm	13.4060 in	91 mm	3.583 in	8146/-081	268702	3.41 kg
340.5 mm	13.406 in	340.5 mm	13.4060 in	131 mm	5.157 in	8146/-082	269236	3.78 kg
340.5 mm	13.406 in	340.5 mm	13.4060 in	150 mm	5.906 in	8146/-083	269240	3.02 kg
340.5 mm	13.406 in	340.5 mm	13.4060 in	171 mm	6.732 in	8146/-084	269242	4.2 kg
340.5 mm	13.406 in	340.5 mm	13.4060 in	190 mm	7.48 in	8146/-085	269244	4.19 kg
340.5 mm	13.406 in	340.5 mm	13.4060 in	230 mm	9.055 in	8146/-086	269246	4.4 kg
340.5 mm	13.406 in	170 mm	6.693 in	91 mm	3.583 in	8146/-S71	268701	2.19 kg
340.5 mm	13.406 in	170 mm	6.693 in	150 mm	5.906 in	8146/-S73	269239	2.56 kg
681.5 mm	26.831 in	340.5 mm	13.4060 in	91 mm	3.583 in	8146/-091	269231	5.64 kg

Selection Table

Silicone-free Ambient temperature		No -60 °C ... +100 °C -76 °F ... +212 °F							
Width	Width in inches	Height	Height, inches	Depth	Depth, inches	Product Type	Art. No.	Weight	
681.5 mm	26.831 in	340.5 mm	13.4060 in	131 mm	5.157 in	8146/-092	269237	6.32 kg	
681.5 mm	26.831 in	340.5 mm	13.4060 in	150 mm	5.906 in	8146/-093	269241	6.33 kg	
681.5 mm	26.831 in	340.5 mm	13.4060 in	190 mm	7.48 in	8146/-095	269245	7.01 kg	
Silicone-free Ambient temperature		Yes -20 °C ... +60 °C -4 °F ... +140 °F							
Width	Width in inches	Height	Height, inches	Depth	Depth, inches	Product Type	Art. No.	Weight	
340.5 mm	13.406 in	170 mm	6.693 in	91 mm	3.583 in	8146/-071	227112	1.34 kg	
340.5 mm	13.406 in	170 mm	6.693 in	131 mm	5.157 in	8146/-072	227113	1.6 kg	
340.5 mm	13.406 in	170 mm	6.693 in	150 mm	5.906 in	8146/-073	227114	1.7 kg	
340.5 mm	13.406 in	170 mm	6.693 in	190 mm	7.48 in	8146/-075	227115	1.98 kg	
340.5 mm	13.406 in	340.5 mm	13.4060 in	150 mm	5.906 in	8146/-083	227118	2.65 kg	
340.5 mm	13.406 in	340.5 mm	13.4060 in	171 mm	6.732 in	8146/-084	227119	2.98 kg	
340.5 mm	13.406 in	340.5 mm	13.4060 in	190 mm	7.48 in	8146/-085	227120	2.97 kg	
340.5 mm	13.406 in	340.5 mm	13.4060 in	230 mm	9.055 in	8146/-086	227121	3.43 kg	
681.5 mm	26.831 in	340.5 mm	13.4060 in	91 mm	3.583 in	8146/-091	227122	3.8 kg	
681.5 mm	26.831 in	340.5 mm	13.4060 in	131 mm	5.157 in	8146/-092	227123	4.48 kg	
681.5 mm	26.831 in	340.5 mm	13.4060 in	150 mm	5.906 in	8146/-093	227124	4.5 kg	
681.5 mm	26.831 in	340.5 mm	13.4060 in	190 mm	7.48 in	8146/-095	227125	5.19 kg	

Technical Data

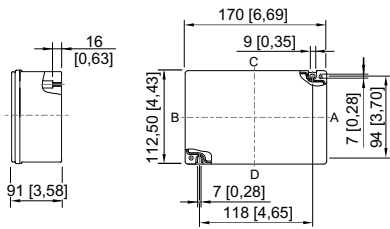
Explosion Protection	
IECEX gas explosion protection	Ex eb IIC Gb
IECEX dust explosion protection	Ex tb IIIC Db
ATEX gas explosion protection	⊕ II 2 G Ex eb IIC Gb
ATEX dust explosion protection	⊕ II 2 D Ex tb IIIC Db
Certificates	ATEX (PTB), IECEX (PTB)
Notes	Product label may vary. Series devices have certification according to ATEX and IECEX.
Ambient Conditions	
Storage temperature	The storage temperature corresponds to the ambient temperature
Mechanical Data	
Degree of protection (IP) (IEC 60529)	IP66
Enclosure material	Polyester resin, Glass fibre reinforced
Enclosure colour	Dark grey, similar to RAL 7024
Flammability according to	IEC/EN 60695 UL 94 ASTM D635
Cover fixing type	With captive screws
Cover thickness	2.8 mm
Cover thickness inch	0.11 in
Wall thickness	2.8 mm
Wall thickness, inches	0.11 in
Impact strength (IEC 60079)	7 J
Impact strength (IEC 62262)	IK09
Surface resistance EN60079-0	10 ⁹ Ω
Packaging unit	1

Technical Data

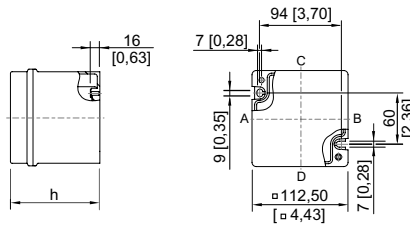
Mounting / Installation

Tightening torque of cover screw	4.5 Nm
Cover screw 1 tightening torque lbf in	39.83 lbf in

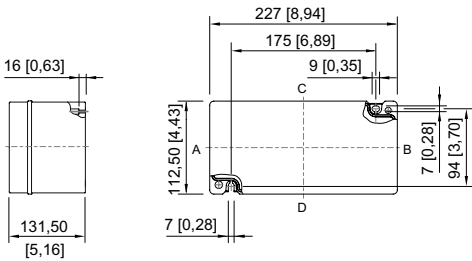
Dimensional Drawings (All Dimensions in mm [inches]) – Subject to Alterations



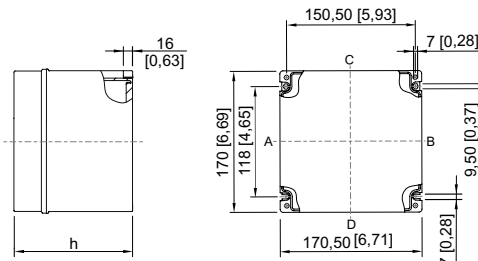
8146/.041



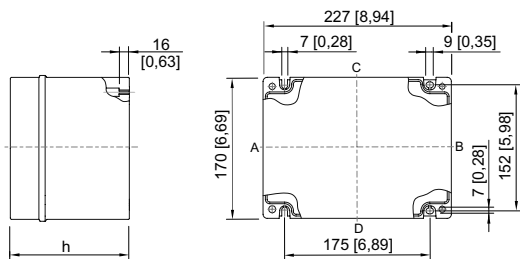
8146/.03.
8146/.031: h = 91 mm [3,58 in]
8146/.037: h = 104 mm [4,09 in]



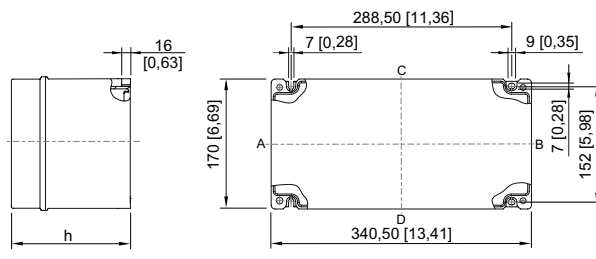
8146/.242



8146/.05.
8146/.051: h = 91 mm [3,58 in]
8146/.052: h = 131 mm [5,16 in]

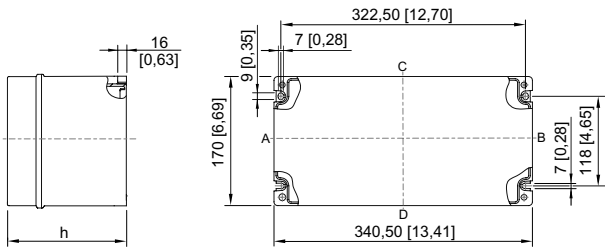


8146/.06.
8146/.061: h = 91 mm [3,58 in]
8146/.062: h = 131 mm [5,16 in]

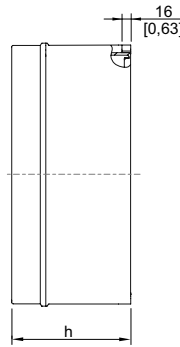


8146/.07.
8146/.071: h = 91 mm [3,58 in]
8146/.072: h = 131 mm [5,16 in]
8146/.073: h = 150 mm [5,91 in]
8146/.075: h = 190 mm [7,48 in]

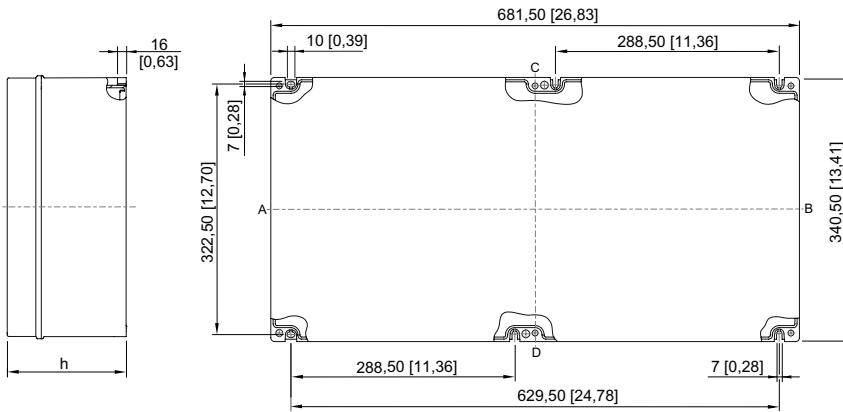
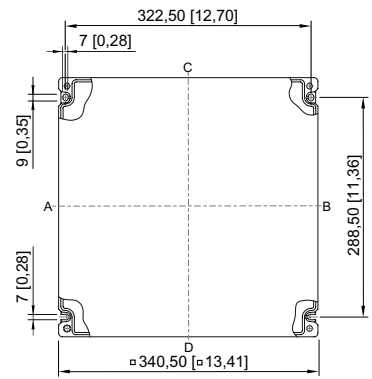
E4



8146/.S7.
8146/.S71: h = 91 mm [3,58 in]
8146/.S73: h = 150 mm [5,91 in]



8146/.08.
8146/.081: h = 91 mm [3,58 in]
8146/.082: h = 131 mm [5,16 in]
8146/.083: h = 150 mm [5,91 in]
8146/.084: h = 171 mm [6,73 in]
8146/.085: h = 190 mm [7,48 in]
8146/.086: h = 230 mm [9,06 in]



8146/.09.
8146/.091: h = 91 mm [3,58 in]
8146/.092: h = 131 mm [5,16 in]
8146/.093: h = 150 mm [5,91 in]
8146/.095: h = 190 mm [7,48 in]