



- Resistant Ex e enclosure, universally usable as connection or junction boxes and/or to safeguard electric distributors up to 6.3 A
- IP66 degree of protection
- With mantle terminals or with a combination of mantle terminals and miniature fuses (optional)

E3

MY R. STAHL 8118A



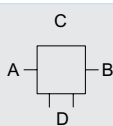
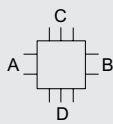
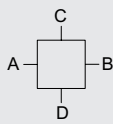
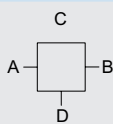
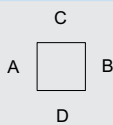
R. STAHL Series 8118 junction boxes are equipped with 4, 5 or 8 mantle terminals depending on their design size. As an option, miniature fuses can still be installed in addition. Junction boxes are therefore also suitable for safeguarding. The robust enclosure made from glass fibre reinforced polyester resin can be equipped with plastic or metal cable glands.

	IECEX / ATEX					
Zone	0	1	2	20	21	22
Installation in		•	•		•	•

Selection Table						
Product Description	Ex e junction box					
Ambient temperature	-60 °C ... +40 °C (T6)					
Ambient temperature	-60 °C ... +55 °C (T5)					
Ambient temperature	-76°F ... +104°F (T6)					
Ambient temperature	-76°F ... +131°F (T5)					
Figure	Product Type	Rated operational voltage AC	Cable glands	Type of terminals	Art. No.	Weight
	8118/111-503	550 V	3 x 8161/7-M20-1304-LT Polyamide cable gland, black (Provided separately) M20 x 1.5 (4 – 13 mm) 1 x 8290/3-M20 Polyamide stopping plug (Provided separately) M20 x 1.5	5 x Mantle terminal 4 mm ²	133248	300 g
	8118/111-401	550 V	2 x 8161/7-M20-1304-LT Polyamide cable gland, black (Provided separately) M20 x 1.5 (4 – 13 mm) 1 x 8290/3-M20 Polyamide stopping plug (Provided separately) M20 x 1.5, provided separately	4 x Mantle terminal 4 mm ²	133077	280 g
	8118/111-400	550 V	–	4 x Mantle terminal 4 mm ²	133218	301 g
	8118/121-807	750 V	4 x 8161/7-M25-1707-LT Polyamide cable gland, black (Provided separately) M25 x 1.5 (7 – 17 mm) 2 x 8290/3-M25 Polyamide stopping plug (Provided separately) M25 x 1.5	8 x Mantle terminal 6 mm ²	133126	600 g

Selection Table

Figure	Product Type	Rated operational voltage AC	Cable glands	Type of terminals 1	Art. No.	Weight
<p>Product Description Ex e junction box Ambient temperature -60 °C ... +40 °C (T6) Ambient temperature -60 °C ... +55 °C (T5) Ambient temperature -76°F ... +104°F (T6) Ambient temperature -76°F ... +131°F (T5)</p>						
	8118/121-805	750 V	3 x 8161/7-M25-1707-LT Polyamide cable gland, black (Provided separately) M25 x 1.5 (7 – 17 mm) 1 x 8290/3-M25 Polyamide stopping plug (Provided separately) M25 x 1.5	8 x Mantle terminal 6 mm ²	133114	570 g
	8118/121-800	750 V	–	8 x Mantle terminal 6 mm ²	133220	480 g
	8118/131-811	750 V	4 x 8161/7-M32-2109-LT Polyamide cable gland, black (Provided separately) M32 x 1.5 (9 – 21 mm) 2 x 8290/3-M32 Polyamide stopping plug (Provided separately) M32 x 1.5	8 x Mantle terminal 10 mm ²	133186	850 g
	8118/131-800	750 V	–	8 x Mantle terminal 10 mm ²	133222	680 g
<p>Product Description Ex e junction box Ambient temperature -40 °C ... +40 °C (T6) Ambient temperature -40 °C ... +55 °C (T5) Ambient temperature -40°F ... +104°F (T6) Ambient temperature -40°F ... +131°F (T5)</p>						
Figure	Product Type	Rated operational voltage AC	Cable glands	Type of terminals 1	Art. No.	Weight
	8118/111-503-C1629	550 V	2 x 8161/7-M20-1304 Polyamide cable gland, black (Provided separately) M20 x 1.5 (4 – 13 mm) 2 x 8290/3-M20 Polyamide stopping plug (Provided separately) M20 x 1.5	5 x Mantle terminal 4 mm ²	223876	370 g
	8118/121-806	750 V	4 x 8161/7-M20-1304 Polyamide cable gland, black (Provided separately) M20 x 1.5 (4 – 13 mm) 2 x 8290/3-M20 Polyamide stopping plug (Provided separately) M20 x 1.5	8 x Mantle terminal 6 mm ²	133120	560 g
	8118/121-539	750 V	2 x 8161/7-M25-1707 Polyamide cable gland, black (Provided separately) M25 x 1.5 (7 – 17 mm)	5 x Mantle terminal 6 mm ²	133253	600 g

Selection Table						
Product Description		Ex e junction box				
Ambient temperature		-40 °C ... +40 °C (T6)				
Ambient temperature		-40 °C ... +55 °C (T5)				
Ambient temperature		-40°F ... +104°F (T6)				
Ambient temperature		-40°F ... +131°F (T5)				
Figure	Product Type	Rated operational voltage AC	Cable glands	Type of terminals 1	Art. No.	Weight
	8118/121-538	750 V	4 x 8161/7-M25-1707 Polyamide cable gland, black (Provided separately) M25 x 1.5 (7 – 17 mm)	5 x Mantle terminal 6 mm ²	133252	625 g
	8118/131-814	750 V	6 x 8161/7-M25-1707 Polyamide cable gland, black (Provided separately) M25 x 1.5 (7 – 17 mm) 4 x 8290/3-M25 Polyamide stopping plug (Provided separately) M25 x 1.5	8 x Mantle terminal 10 mm ²	133210	850 g
Product Description		Ex i junction box				
Ambient temperature		-40 °C ... +75 °C (T6)				
Ambient temperature		-40°F ... +167°F (T6)				
Figure	Product Type	Rated operational voltage AC	Cable glands	Type of terminals 1	Art. No.	Weight
	8118/211-403	60 V	3 x 8161/8-M20-1304 Polyamide cable gland, blue (Provided separately) M20 x 1.5 (7 – 17 mm) 1 x 8290/3-M20 Polyamide stopping plug (Provided separately) M20 x 1.5	4 x Mantle terminal 4 mm ²	133104	330 g
	8118/211-401	60 V	2 x 8161/8-M20-1304 Polyamide cable gland, blue (Provided separately) M20 x 1.5 (4 – 13 mm) 1 x 8290/3-M20 Polyamide stopping plug (Provided separately) M20 x 1.5	4 x Mantle terminal 4 mm ²	133084	280 g
Product Description		Ex i junction box				
Ambient temperature		-20 °C ... +75 °C (T6)				
Ambient temperature		-4°F ... +167°F (T6)				
Figure	Product Type	Rated operational voltage AC	Cable glands	Type of terminals 1	Art. No.	Weight
	8118/221-899	60 V	–	8 x Mantle terminal 6 mm ²	133219	500 g


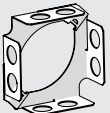
"—" = marking for installation option
Junction boxes with miniature fuse on request

Technical Data		
Variant	Ex e junction box	Ex i junction box
Explosion Protection		
Area of application	European Union (ATEX) IECEX	European Union (ATEX) IECEX
IECEX gas explosion protection	Ex eb IIC T6 / T5 Gb	Ex ia ib IIC T6 Gb
IECEX dust explosion protection	Ex tb IIIC T80 °C / T95 °C Db	Ex tb IIIC T80 °C Db
ATEX gas explosion protection	Ⓜ II 2 G Ex eb IIC T6 / T5 Gb	Ⓜ II 2 G Ex ia ib IIC T6 Gb
ATEX dust explosion protection	Ⓜ II 2 D Ex tb IIIC T80 °C / T95 °C Db	Ⓜ II 2 D Ex tb IIIC T80 °C Db
Certificates	ATEX (PTB), Brazil (ULB), China (NEPSI), IECEX (PTB), India (PESO), Korea (KTL)	ATEX (PTB), Brazil (ULB), China (NEPSI), IECEX (PTB), India (PESO)

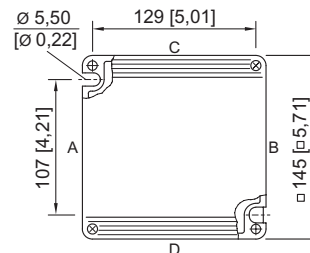
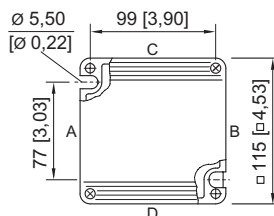
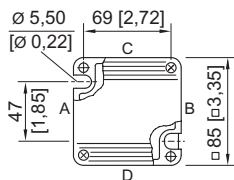
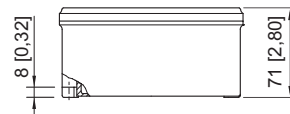
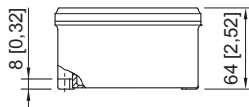
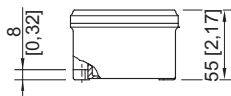
Technical Data		
Variant	Ex e junction box	Ex i junction box
Explosion Protection		
Declaration of Conformity	ATEX (EUK), China (CCC)	China (CCC)
Notes	For product label, see scope of validity.	
Mechanical Data		
Enclosure material	Polyester resin, Glass fibre reinforced	Polyester resin, Glass fibre reinforced
Packaging unit	1	1

Accessories			
Figure	Description	Art. No.	Weight
Cable gland made of plastic			
	8161/7-M20-1304, Ex e Plastic, M20 x 1.5, cable outer diameter 4 to 13 mm Lot size 50 pieces	239156	13 g
	8161/7-M20-1307-LT, Ex e Plastic, M20 x 1.5, cable outer diameter 7 to 13 mm Lot size 50 pieces	239204	13 g
	8161/7-M25-1707, Ex e Plastic, M25 x 1.5, cable outer diameter 7 to 17 mm Lot size 50 pieces	239157	19 g
	8161/7-M25-1710-LT, Ex e Plastic, M25 x 1.5, cable outer diameter 10 to 17 mm Lot size 50 pieces	239205	19 g
Plastic cable gland			
	8161/7-M32-2113-LT, Ex e Plastic, M32 x 1.5, cable outer diameter 13 to 21 mm Lot size 25 pieces	239206	32 g
	8161/8-M20-1304, Ex i Plastic, M20 x 1.5, cable outer diameter 4 to 13 mm Lot size 50 pieces	239164	13 g
Stopping plug			
	8290/3-M20 Plastic, M20 x 1.5 Lot size 100 pieces	285773	500 g
	8290/3-M25 Plastic, M25 x 1.5 Lot size 100 piece	285774	700 g
	8290/3-M32 Plastic, M32 x 1.5 Lot size 50 piece	285779	600 g

Accessories			
Figure	Description	Art. No.	Weight
Brass plate with thread			
	8118 SZ 1, plate 37 x 30 mm [1.46 x 1.18 inch] 1 x M20 x 1.5 with M4 PE connection (left) Can be installed in enclosures of SZ 1, SZ 2 and SZ 3	168913	-
	8118 SZ 1, plate 37 x 30 mm [1.46 x 1.18 inch] 1 x M20 x 1.5 with M4 PE connection (right) Can be installed in enclosures of SZ 1, SZ 2 and SZ 3	168914	-
	8118 SZ 2, plate 56 x 40 mm [2.2 x 1.57 inch] 2 x M20 x 1.5 with M4 PE connection (right) For installation in enclosure SZ 2 and SZ 3	244072	-
	8118 SZ 2, plate 56 x 40 mm [2.2 x 1.57 inch] 1 x M25 x 1.5 with M4 PE connection (left) For installation in enclosure SZ 2 and SZ 3	211341	-
	8118 SZ 3, plate 74 x 40 mm [2.91 x 1.57 inch] 2 x M20 x 1.5 with M4 PE connection (centre) For installation in enclosure SZ 2 and SZ 3	168915	-
	8118 SZ 3/B, plate 74 x 40 mm [2.91 x 1.57 inch] 2 x M20 x 1.5 with M4 PE connection (centre) For installation in enclosure SZ 2 and SZ 3	244075	-
	8118 SZ 3, plate 74 x 40 mm [2.91 x 1.57 inch] 1 x M20 x 1.5 + 1 x M10 with M4 PE connection (centre) For installation in enclosure SZ 2 and SZ 3	211342	-
	8118 SZ 3, plate 74 x 40 mm [2.91 x 1.57 inch] 2 x M25 x 1.5 with M4 PE connection (centre) For installation in enclosure SZ 2 and SZ 3	168916	-
	8118 SZ 3, plate 74 x 40 mm [2.91 x 1.57 inch] 1 x M25 x 1.5 + 1 x M10 with M4 PE connection (centre) For installation in enclosure SZ 2 and SZ 3	211343	-
	8118 SZ 4, plate 95 x 46 mm [3.74 x 1.81 inch] 2 x M20 x 1.5 with M4 PE connection (centre) For installation in enclosure SZ 3	168917	-
	8118 SZ 4, plate 95 x 46 mm [3.74 x 1.81 inch] 2 x M25 x 1.5 with M4 PE connection (centre) For installation in enclosure SZ 3	168918	-
	8118 SZ 5, plate 107 x 46 mm [4.21 x 1.81 inch] 2 x M20 x 1.5 + 1 x M10 with M4 PE connection For installation in enclosure SZ 3	211344	-
	8118 SZ 5, plate 107 x 46 mm [4.21 x 1.81 inch] 2 x M25 x 1.5 + 1 x M10 with M4 PE connection (centre) For installation in enclosure SZ 3	211345	-

Spare Parts			
Figure	Description	Art. No.	Weight
Angle			
	Bracket 8118 SZ 2, for junction boxes, 4 x M25 For installation in enclosure SZ 2	202959	-
	Bracket 8118 size 3, for junction boxes, 8 x M25 For installation in enclosure SZ 3	202960	-

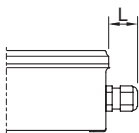
Batch size: Purchase order quantity in [no. of units]; the delivery quantity is automatically rounded to the batch size.



8118/1.
Enclosure SZ 1

8118/2.
Enclosure SZ 2

8118/3.
Enclosure SZ 3



Length L

Projection dimension for cable gland of Series 8161:

For M20: 25 to 31 [0.98 to 1.22]

For M25: 27 to 33 [1.06 to 1.3]

For M32: 32 to 39 [1.26 to 1.54]

Projection dimension for cable gland with strain relief of Series HSK-K-MZ

For M25: 41 [1.61]