



- Resistant Ex e enclosure, universally usable as connection or junction boxes and/or to safeguard electric distributors up to 6.3 A
- IP66 degree of protection
- With mantle terminals or with a combination of mantle terminals and miniature fuses (optional)

E3

WebCode **8118A**



R. STAHL Series 8118 junction boxes are equipped with 4, 5 or 8 mantle terminals depending on their design size. As an option, miniature fuses can still be installed in addition. Junction boxes are therefore also suitable for safeguarding. The robust enclosure made from glass fibre reinforced polyester resin can be equipped with plastic or metal cable glands.

	IECEX / ATEX					
Zone	0	1	2	20	21	22
Installation in		•	•		•	•

Selection Table						
Product Description	Ex e junction box					
Ambient temperature	-60 °C ... +40 °C (T6)					
	-60 °C ... +55 °C (T4)					
Ambient temperature	-76°F ... +104°F (T6)					
	-76°F ... +131°F (T4)					
Figure	Product Type	Cable glands	Type of terminals 1	Art. No.	Weight	
	8118/121-638-C1917	2 x 8161/7-M25-1707-LT Polyamide cable gland, black with plug M25 x 1.5 (7 – 17 mm) 2 x 8161/7-M25-1707-LT Polyamide cable gland, black M25 x 1.5 (7 – 17 mm)	6 x Mantle terminal 6 mm <sup>2</sup>	253858	800 g	
	8118/131-899-C1918	3 x 8161/7-M32-2109-LT Polyamide cable gland, black M32 x 1.5 (9 – 21 mm) 1 x 8161/7-M25-1707-LT Polyamide cable gland, black M25 x 1.5 (7 – 17 mm)	8 x Mantle terminal 10 mm <sup>2</sup>	253859	900 g	

**Selection Table**

Product Description	Ex e junction box
Ambient temperature	-60 °C ... +40 °C (T6)
Ambient temperature	-60 °C ... +55 °C (T5)
Ambient temperature	-76°F ... +104°F (T6)
Ambient temperature	-76°F ... +131°F (T5)

Figure	Product Type	Cable glands	Type of terminals 1	Art. No.	Weight
	8118/111-503	3 x 8161/7-M20-1304-LT Polyamide cable gland, black (Provided separately) M20 x 1.5 (4 – 13 mm) 1 x 8290/3-M20 Polyamide stopping plug (Provided separately) M20 x 1.5	5 x Mantle terminal 4 mm <sup>2</sup>	133248	300 g
	8118/111-401	2 x 8161/7-M20-1304-LT Polyamide cable gland, black (Provided separately) M20 x 1.5 (4 – 13 mm) 1 x 8290/3-M20 Polyamide stopping plug (Provided separately) M20 x 1.5, provided separately	4 x Mantle terminal 4 mm <sup>2</sup>	133077	280 g
	8118/111-400	-	4 x Mantle terminal 4 mm <sup>2</sup>	133218	301 g
	8118/121-807	4 x 8161/7-M25-1707-LT Polyamide cable gland, black (Provided separately) M25 x 1.5 (7 – 17 mm) 2 x 8290/3-M25 Polyamide stopping plug (Provided separately) M25 x 1.5	8 x Mantle terminal 6 mm <sup>2</sup>	133126	600 g
	8118/121-805	3 x 8161/7-M25-1707-LT Polyamide cable gland, black (Provided separately) M25 x 1.5 (7 – 17 mm) 1 x 8290/3-M25 Polyamide stopping plug (Provided separately) M25 x 1.5	8 x Mantle terminal 6 mm <sup>2</sup>	133114	570 g
	8118/121-800	-	8 x Mantle terminal 6 mm <sup>2</sup>	133220	480 g
	8118/131-811	4 x 8161/7-M32-2109-LT Polyamide cable gland, black (Provided separately) M32 x 1.5 (9 – 21 mm) 2 x 8290/3-M32 Polyamide stopping plug (Provided separately) M32 x 1.5	8 x Mantle terminal 10 mm <sup>2</sup>	133186	850 g
	8118/131-800	-	8 x Mantle terminal 10 mm <sup>2</sup>	133222	680 g

# Junction Boxes

Series 8118 made of Moulded Material, with 4 to 8 Mantle Terminals



E3

Selection Table					
Product Description		Ex e junction box			
Ambient temperature		-40 °C ... +40 °C (T6)			
Ambient temperature		-40 °C ... +55 °C (T5)			
Ambient temperature		-40°F ... +104°F (T6)			
Ambient temperature		-40°F ... +131°F (T5)			
Figure	Product Type	Cable glands	Type of terminals 1	Art. No.	Weight
	8118/111-503-C1629	2 x 8161/7-M20-1304 Polyamide cable gland, black (Provided separately) M20 x 1.5 (4 – 13 mm) 2 x 8290/3-M20 Polyamide stopping plug (Provided separately) M20 x 1.5	5 x Mantle terminal 4 mm <sup>2</sup>	223876	370 g
	8118/121-806	4 x 8161/7-M20-1304 Polyamide cable gland, black (Provided separately) M20 x 1.5 (4 – 13 mm) 2 x 8290/3-M20 Polyamide stopping plug (Provided separately) M20 x 1.5	8 x Mantle terminal 6 mm <sup>2</sup>	133120	560 g
	8118/121-539	2 x 8161/7-M25-1707 Polyamide cable gland, black (Provided separately) M25 x 1.5 (7 – 17 mm)	5 x Mantle terminal 6 mm <sup>2</sup>	133253	600 g
	8118/121-538	4 x 8161/7-M25-1707 Polyamide cable gland, black (Provided separately) M25 x 1.5 (7 – 17 mm)	5 x Mantle terminal 6 mm <sup>2</sup>	133252	625 g
	8118/131-814	6 x 8161/7-M25-1707 Polyamide cable gland, black (Provided separately) M25 x 1.5 (7 – 17 mm) 4 x 8290/3-M25 Polyamide stopping plug (Provided separately) M25 x 1.5	8 x Mantle terminal 10 mm <sup>2</sup>	133210	850 g
Product Description		Ex i junction box			
Ambient temperature		-40 °C ... +75 °C (T6)			
Ambient temperature		-40°F ... +167°F (T6)			
Figure	Product Type	Cable glands	Type of terminals 1	Art. No.	Weight
	8118/211-403	3 x 8161/8-M20-1304 Polyamide cable gland, blue (Provided separately) M20 x 1.5 (7 – 17 mm) 1 x 8290/3-M20 Polyamide stopping plug (Provided separately) M20 x 1.5	4 x Mantle terminal 4 mm <sup>2</sup>	133104	330 g
	8118/211-401	2 x 8161/8-M20-1304 Polyamide cable gland, blue (Provided separately) M20 x 1.5 (4 – 13 mm) 1 x 8290/3-M20 Polyamide stopping plug (Provided separately) M20 x 1.5	4 x Mantle terminal 4 mm <sup>2</sup>	133084	280 g

## Selection Table

Product Description	Ex i junction box				
Ambient temperature	-20 °C ... +75 °C (T6)				
Ambient temperature	-4°F ... +167°F (T6)				
Figure	Product Type	Cable glands	Type of terminals 1	Art. No.	Weight
	8118/221-899	-	8 x Mantle terminal 6 mm <sup>2</sup>	133219	500 g

"—" = marking for installation option  
Junction boxes with miniature fuse on request

## Technical Data

Variant	Ex e junction box	Ex i junction box
<b>Explosion Protection</b>		
Scope of validity	European Union (ATEX) IECEX	European Union (ATEX) IECEX
IECEX gas explosion protection	Ex eb IIC T6 / T5 Gb	Ex ia ib IIC T6 Gb
IECEX dust explosion protection	Ex tb IIIC T80 °C / T95 °C Db	Ex tb IIIC T80 °C Db
ATEX gas explosion protection	⊕ II 2 G Ex eb IIC T6 / T5 Gb	⊕ II 2 G Ex ia ib IIC T6 Gb
ATEX dust explosion protection	⊕ II 2 D Ex tb IIIC T80 °C / T95 °C Db	⊕ II 2 D Ex tb IIIC T80 °C Db
Certificates	ATEX (PTB), Brazil (ULB), China (NEPSI), IECEx (PTB), India (PESO), Korea (KTL)	ATEX (PTB), Brazil (ULB), China (NEPSI), IECEx (PTB), India (PESO)
Notes	For product label, see scope of validity.	
<b>Mechanical Data</b>		
Enclosure material	Polyester resin, Glass fibre reinforced	Polyester resin, Glass fibre reinforced
Packaging unit	1	1

## Accessories

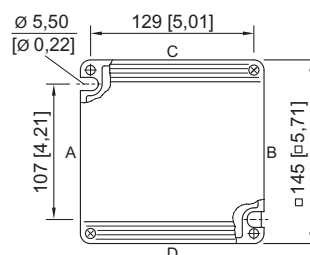
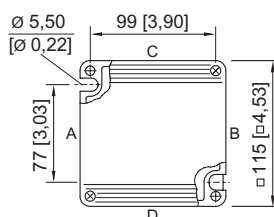
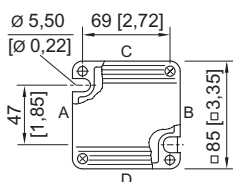
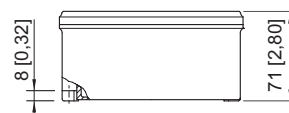
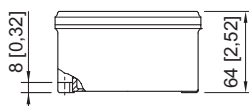
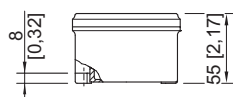
Figure	Description	Art. No.	Weight
<b>Angle</b>			
	Angle 8118 size 2, for junction boxes 4 x M20	209556	0 g
	Angle 8118 size 2, for junction boxes 4 x M25	202959	0 g
	Angle 8118 size 3, for junction boxes 8 x M25	202960	0 g

Accessories			
Figure	Description	Art. No.	Weight
<b>Cable gland made of plastic</b>			
	8161/7-M20-1304, Ex e Plastic, M20 x 1.5, cable outer diameter 4 to 13 mm Lot size 50 pieces	239156	13 g
	8161/7-M20-1307-LT, Ex e Plastic, M20 x 1.5, cable outer diameter 7 to 13 mm Lot size 50 pieces	239204	13 g
	8161/7-M25-1707, Ex e Plastic, M25 x 1.5, cable outer diameter 7 to 17 mm Lot size 50 pieces	239157	19 g
	8161/7-M25-1710-LT, Ex e Plastic, M25 x 1.5, cable outer diameter 10 to 17 mm Lot size 50 pieces	239205	19 g
	8161/7-M32-2109, Ex e Plastic, M32 x 1.5, cable outer diameter 9 to 21 mm Batch size 25 pieces	239158	32 g
	8161/7-M32-2113-LT, Ex e Plastic, M32 x 1.5, cable outer diameter 13 to 21 mm Batch size 25 pieces	239206	32 g
	8161/8-M20-1304, Ex i Plastic, M20 x 1.5, cable outer diameter 4 to 13 mm Lot size 50 pieces	239164	13 g
<b>Stopping plug</b>			
	8290/3-M20 Plastic, M20 x 1.5 Lot size 100 pieces	285773	500 g
	8290/3-M25 Plastic, M25 x 1.5 Lot size 100 pieces	285774	700 g
	8290/3-M32 Plastic, M32 x 1.5 Lot size 50 pieces	285779	600 g
<b>Brass plate with thread</b>			
	8118 size 1, plate 37 x 30 mm [1.46 x 1.18"] 1 x M20 x 1.5 with M4 PE connection (left) for installation in enclosure size 1, size 2 and size 3	168913	-
	8118 size 1, plate 37 x 30 mm [1.46 x 1.18"] 1 x M20 x 1.5 with M4 PE connection (right) for installation in enclosure size 1, size 2 and size 3	168914	-
	8118 size 2, plate 56 x 40 mm [2.2 x 1.57"] 2 x M20 x 1.5 with M4 PE connection (right) for installation in enclosure size 2 and size 3	244072	-
	8118 size 2, plate 56 x 40 mm [2.2 x 1.57"] 1 x M25 x 1.5 with M4 PE connection (left) for installation in enclosure size 2 and size 3	211341	-
	8118 size 3, plate 74 x 40 mm [2.91 x 1.57"] 2 x M20 x 1.5 with M4 PE connection (centre) for installation in enclosure size 2 and size 3	168915	-
	8118 size 3/B, plate 74 x 40 mm [2.91 x 1.57"] 2 x M20 x 1.5 with M4 PE connection (centre) for installation in enclosure size 2 and size 3	244075	-
	8118 size 3, plate 74 x 40 mm [2.91 x 1.57"] 1 x M20 x 1.5 + 1 x M10 with M4 PE connection (centre) for installation in enclosure size 2 and size 3	211342	-
	8118 size 3, plate 74 x 40 mm [2.91 x 1.57"] 2 x M25 x 1.5 with M4 PE connection (centre) for installation in enclosure size 2 and size 3	168916	-

**Accessories**

Figure	Description	Art. No.	Weight
<b>Brass plate with thread</b>			
	8118 size 3, plate 74 x 40 mm [2.91 x 1.57"] 1 x M25 x 1.5 + 1 x M10 with M4 PE connection (centre) for installation in enclosure size 2 and size 3	211343	-
	8118 size 4, plate 95 x 46 mm [3.74 x 1.81"] 2 x M20 x 1.5 with M4 PE connection (centre) for installation in enclosure size 3	168917	-
	8118 size 4, plate 95 x 46 mm [3.74 x 1.81"] 2 x M25 x 1.5 with M4 PE connection (centre) for installation in enclosure size 3	168918	-
	8118; size 5, plate 107 x 46 mm [4.21 x 1.81"] 2 x M20 x 1.5 + 1 x M10 with M4 PE connection for installation in enclosure size 3	211344	-
	8118 size 5, plate 107 x 46 mm [4.21 x 1.81"] 2 x M25 x 1.5 + 1 x M10 with M4 PE connection (centre) for installation in enclosure size 3	211345	-

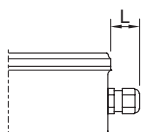
Lot size: Purchase order quantity in [pieces], the delivery quantity is automatically rounded to the lot size.

**Dimensional Drawings (All Dimensions in mm [inches]) – Subject to Alterations**


8118/.1.  
enclosure size 1

8118/.2.  
enclosure size 2

8118/.3.  
enclosure size 3


**Length L**

protrusion length for cable glands, Series 8161

in case of M20: 25 ... 31 [0.98 ... 1.22]

in case of M25: 27 ... 33 [1.06 ... 1.3]

in case of M32: 32 ... 39 [1.26 ... 1.54]

protrusion length for cable glands with strain relief,

Series HSK-K-MZ

in case of M25: 41 [1,61]