



- Metal Ex-d- and Ex-e adaptors
- Large selection of thread types and sizes
- Operating temperature range: -60 °C ... +200 °C
- Worldwide certification, IECEx, ATEX, UL and cCSAus

E10

MY R. STAHL 737DB



The metal Ex-d adaptors and reducers from the 737 series enable adaptation of the thread sizes and types. There is a wide selection of different versions available. They have worldwide certification according to IECEx, ATEX, UL and cCSAus.

	IECEx / ATEX					
Zone	0	1	2	20	21	22
Installation in		•	•	•	•	•

Selection Table					
Material	Nickel-plated brass				
External thread	Internal thread	Width across flats	Art. No.	Weight	
M16	M20	24 mm	252965	50 g	
M20	M25	30 mm	252966	75 g	
	NPT1/2	24 mm	252992	50 g	
	NPT3/4	31.5 mm	252993	100 g	
M25	M32	37.6 mm	252967	75 g	
	NPT3/4	30 mm	252994	133 g	
M32	M40	46 mm	252968	100 g	
	NPT1	41 mm	252995	1 kg	
M40	M50	60 mm	252969	200 g	
NPT1/2	M20	27 mm	252999	50 g	
Material	Stainless steel				
External thread	Internal thread	Width across flats	Art. No.	Weight	
M20	M25	30 mm	252996	1 kg	
	NPT1/2	24 mm	252997	55 g	
M25	NPT3/4	30 mm	225053	133 g	
M32	NPT1	41 mm	252998	100 g	

Technical Data	
Explosion Protection	
IECEx gas explosion protection	Ex eb IIC Gb
IECEx gas explosion protection 2	Ex db IIC Gb

Technical Data

Explosion Protection

IECEX dust explosion protection	Ex ta IIIC Da
IECEX firedamp protection	Ex db I Mb
IECEX firedamp protection 2	Ex eb I Mb
ATEX gas explosion protection	⊕ II 2 G Ex eb IIC Gb
ATEX gas explosion protection 2	⊕ II 2 G Ex db IIC Gb
ATEX dust explosion protection	⊕ II 1 D Ex ta IIIC Da
ATEX firedamp protection	⊕ I M2 Ex db I Mb
ATEX firedamp protection 2	⊕ I M2 Ex eb I Mb

Notes: The product certification and certificates can be downloaded from the manufacturer's homepage (www.cmp-products.com)

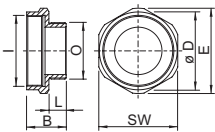
Ambient Conditions

Ambient temperature: -60 °C ... +200 °C

Mechanical Data

Degree of protection (IP)	IP66
Degree of protection note	IP67 and IP68 mounting in accordance with the specifications of the manufacturer, CMP. The specified degrees of protection are only fulfilled if CMP installation accessories are used.
Silicone-free	Yes

Dimensional Drawings (All Dimensions in mm [inches]) – Subject to Alterations



O = External thread I = Internal thread
 SW = Width across flats E = Width across corners
 B = Length L = Thread length