



- Advantageous LED technology: Extremely long service life, high luminance, low heat build-up
- For installation in enclosure walls, device covers, panels or control cabinets
- Version with spring clamp terminal with connection enclosure or version with prefabricated connection line and connection enclosure available

E4

WebCode **8013B**



R. STAHL Series 8013 LED indicating lamps show command statuses via a light signal, the colour of which you can determine using the colour filter included in the delivery: Red, yellow, green, blue or white. The long-life LEDs provide high luminance and low heat build-up. Versions with spring clamp terminal with connection enclosure and versions with prefabricated connection line and connection enclosure are available.

	IECEx / ATEX					
Zone	0	1	2	20	21	22
Installation in		•	•		•	•








Selection Table							
Product variant		Ex d e					
Connection	Conductor length	Conductor length, inches	Connection cross-section	Connection cross-section AWG	Product Type	Art. No.	Weight
Plug-in connection, connection cable	3 m	118.11 in	0,75 mm <sup>2</sup>	–	8013/313-al-3	269755	625 g
	6 m	236.22 in	0,75 mm <sup>2</sup>	–	8013/313-al-6	269752	625 g
	15 m	590.55 in	0,75 mm <sup>2</sup>	–	8013/313-al-15	269754	625 g
Spring terminal connection	–	–	0.75 ... 1.5 mm <sup>2</sup>	18 AWG ... 12 AWG	8013/311-al	269658	130 g
		–	0.5 ... 2.5 mm <sup>2</sup>	18 AWG ... 12 AWG	8013/312-al	269660	140 g
Product variant		Ex i					
Connection	Conductor length	Conductor length, inches	Connection cross-section	Connection cross-section AWG	Product Type	Art. No.	Weight
Plug-in connection, connection cable	6 m	236.22 in	0,75 mm <sup>2</sup>	–	8013/323-al-6	269753	625 g
Spring terminal connection	–	–	0.75 ... 1.5 mm <sup>2</sup>	18 AWG ... 12 AWG	8013/321-al	269659	100 g
		–	0.5 ... 2.5 mm <sup>2</sup>	18 AWG ... 12 AWG	8013/322-al	269751	110 g

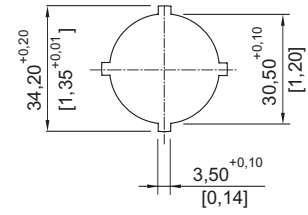
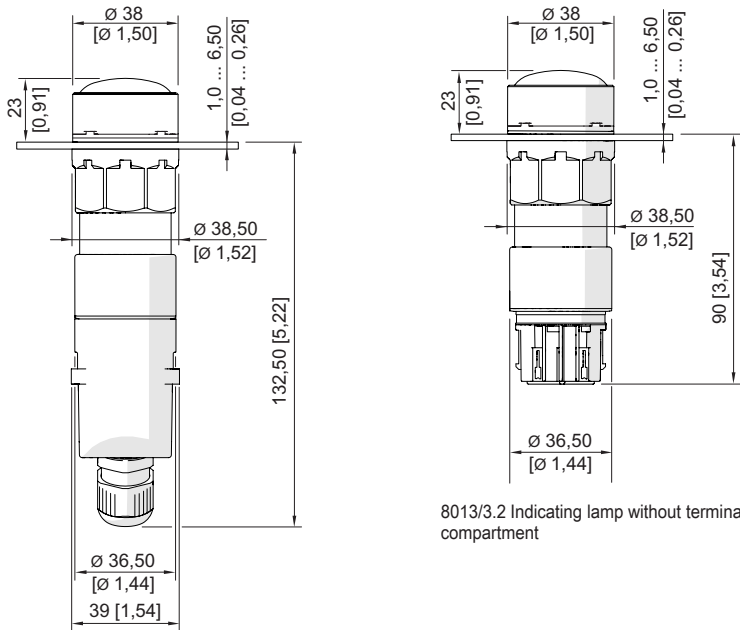
The calotte insert caps red, yellow, green, blue, white are enclosed in the delivery.

Technical Data		
Variant	Ex i With connection chamber	Ex i Without connection chamber
Explosion Protection		
IECEx gas explosion protection	Ex db mb ia IIC T6 Gb	Ex db mb ia IIC Gb
IECEx dust explosion protection	Ex tb IIIC T80 °C Db	
ATEX gas explosion protection	Ⓔ II 2 G Ex db mb ia IIC T6 Gb	Ⓔ II 2 G Ex db mb ia IIC Gb

Technical Data		
Variant	Ex i With connection chamber	Ex i Without connection chamber
<b>Explosion Protection</b>		
ATEX dust explosion protection	II 2 D Ex tb IIIC T80 °C Db	
Certificates	ATEX (PTB), China (CQST), IECEx (PTB)	ATEX (PTB), China (CQST), IECEx (PTB)
Notes	Product label may vary. Series devices have certification according to ATEX and IECEx.	
<b>Safety Data</b>		
Max. capacitance $C_i$	Negligible	Negligible
Max. inductance $L_i$	Negligible	Negligible
Max. voltage $U_i$	28 V	28 V
Max. current $I_i$	150 mA	150 mA
Max. power $P_i$	1 W	1 W
<b>Electrical Data</b>		
Rated operational voltage AC	10.8 – 28 V	10.8 – 28 V
Rated operational voltage DC	10.8 – 28 V	10.8 – 28 V
AC UL rated operational voltage	28 V	28 V
Rated operational current	12 mA	12 mA
Frequency	0 to 60 Hz	0 to 60 Hz
UL rated operational current	0.15 A	0.15 A
Rated operational power	0.6 W	0.6 W
Electrical service life	10 <sup>5</sup> lighting hours	10 <sup>5</sup> lighting hours
<b>Ambient Conditions</b>		
Ambient temperature	-30 °C ... +60 °C	-30 °C ... +60 °C
Ambient temperature	-22 °F ... +140 °F	-22 °F ... +140 °F
<b>Lighting Data</b>		
Lamp	White LED	White LED
Luminous colour	Blue Green Red White Yellow	Blue Green Red White Yellow
<b>Mechanical Data</b>		
Degree of protection (IP) (IEC 60529)	Reverse side IP65, front side IP66	Reverse side IP20, front side IP66
Silicone-free	Yes	Yes
<b>Mounting / Installation</b>		
Tightening torque	1.2 Nm	1.2 Nm
Tightening torque lbf in	10.62 lbf in	10.62 lbf in
<b>Components</b>		
Entry 1	1 x 8161/8-M16-0902	
Entry 1 type	Polyamide cable gland, blue	
Entry 1	M16 x 1.5	
Entry 1 terminal area	2 – 9 mm	
Entry 1 clamping range, inch	0.08 – 0.35 in	

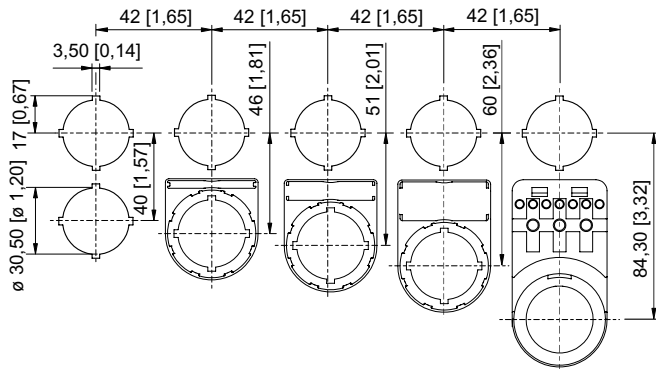
Accessories			
Figure	Description	Art. No.	Weight
<b>Insert cap</b>			
	red	155842	3 g
	yellow	155834	3 g
	green	155852	3 g
	blue	155860	3 g
	white	155824	3 g

Spare Parts			
Figure	Description	Art. No.	Weight
<b>Closing part</b>			
	8602C3-733-B for closing unused holes in cover, Ø 30.5 mm, NBR	244306	25 g
	8602C3-733-S for closing unused holes in cover, Ø 30.5 mm, silicone	244307	25 g
<b>Insert discs for label holder</b>			
	1-line Plain Material: PVC Colour: White Self-adhesive	238271	10 g
	2-line Plain Material: PVC Colour: White Self-adhesive	238272	10 g
	3-line Plain Material: PVC Colour: White Self-adhesive	238273	10 g
<b>Label mount</b>			
	Label mount, size 1, without symbol label Text: 1 line for actuators to fit Ø 30.5 mm holes	155632	1 g
	Label mount, size 2, without symbol label Text: 1 or 2 lines for actuators to fit Ø 30.5 mm holes	155687	2 g
	Label mount, size 3, without symbol label Text: 1, 2 or 3 lines for actuators to fit Ø 30.5 mm holes	155844	2 g



Cut-out details

8013/3.1, 8013/3.3 Indicating lamp with terminal compartment



Cut-out with / without front label