

# Lighting

## Emergency luminaire With LED

GRP

L409/4328-5101-162-2220-22-850011 Art. No. 278303



- Long-lasting LED version of the EXLUX family in an industrial design
- Robust, durable enclosure with central lock for use as humid lighting
- Integrated, automatically started test function for the integrated battery
- Up to 3 hours battery runtime with a luminous flux of 1000 lm in emergency operation
- Available with warm white, neutral white and cold white colour temperatures

### MY R. STAHL L409A

The EXLUX L409/4 light fitting completes the LED linear luminaire range. The industrial design of the emergency luminaires offers all the advantages of the robust enclosure technology and long-lasting LED technology for which the EXLUX range is known. This automatically starts all test functions set out as mandatory in standards and the ergonomic light fitting device provides clear signals. The entire range of installation material for the EXLUX family is also available.

## Technical Data

### Explosion Protection

Ex version	Industrial design
------------	-------------------

### Electrical Data

Rated operational voltage AC	110 – 240 V
Battery version	NiCd battery, gas-tight
Battery operating voltage	6 V
Battery capacity	7 Ah
Self-test function	With (standard)
Frequency range	50 – 60 Hz

### Lighting Data

Number of lamps	1
Lamp wattage	25 W
Lamp	LED
Light colour	5000 K – neutral white
Light distribution	120°x120° with diffusing glass
Luminaire efficacy	116 lm/W
Luminous flux	2910 lm
Operating time	1.5 h emergency lighting operation
Emergency light output	65% – 1.5 h
Colour rendering	≥ 80
Colour temperature	5000 K

### Ambient Conditions

Ambient temperature	-30 °C ... +50 °C Note: Through wiring Max. 3x16 A -30 °C ... +55 °C Note: Through wiring 2 Max. 3x10 A
---------------------	--

### Mechanical Data

Version	Standard
IP degree of protection (IEC 60598)	IP66/IP67

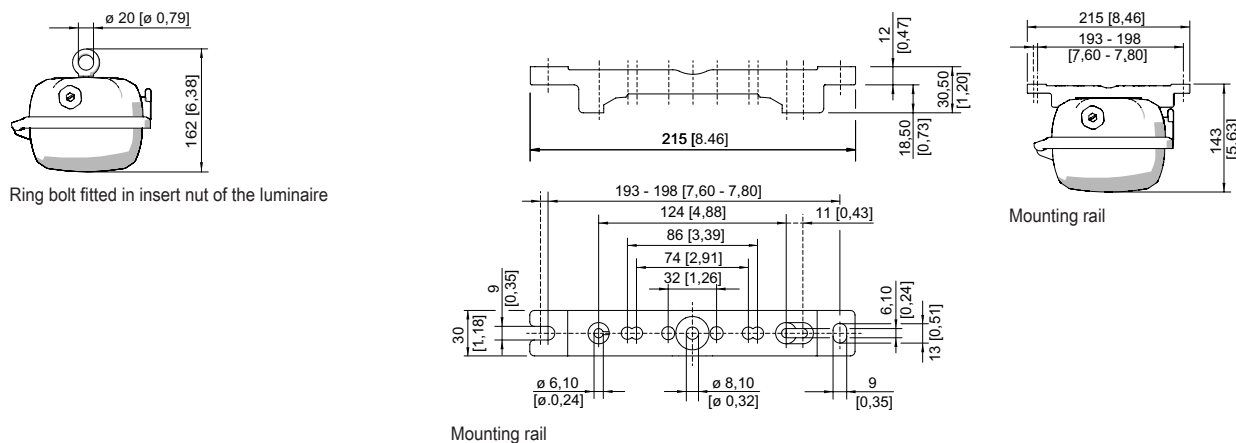
#### Mechanical Data

Enclosure material	Polyester resin, Glass fibre reinforced
Enclosure colour	Light grey (RAL 7035)
Diffuser	With diffuser
Sealing material	Silicone
Silicone-free content	Contains silicone
Translucent cover material	Polycarbonate
Installed terminal strip	PE + N + L1 + L2 + L3 + L'
Max. solid connection terminals	6 mm <sup>2</sup>
Max. finely stranded connection terminals	4 mm <sup>2</sup>
Type of connection cable	Finely stranded Solid
Size	2
Width	183.5 mm
Height	125 mm
Length	857 mm
Impact strength (IEC 62262)	IK10
Weight	5.4 kg
Weight	11.9 lb
Disconnection of the luminaire	Only battery

#### Components

Threaded plate	2x SS430 stainless steel
Ballast	LED NLE 80W 110-240V/7Ah/1.5h/
Through wiring	With 6 conductors 2.5 mm <sup>2</sup>
Drilled holes	3 x M20
Cable glands and entries	Can be ordered as accessories
Stopping plugs	Can be ordered as accessories
Accessories	without

#### Dimensional Drawings (All Dimensions in mm [inches]) – Subject to Alterations

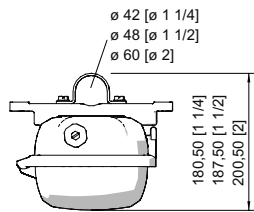


# Lighting

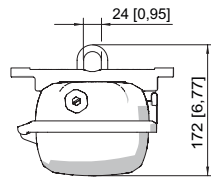
## Emergency luminaire With LED

### GRP

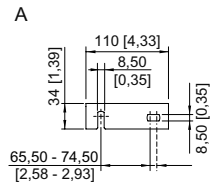
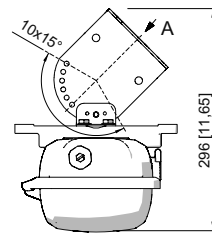
L409/4328-5101-162-2220-22-850011 Art. No. 278303



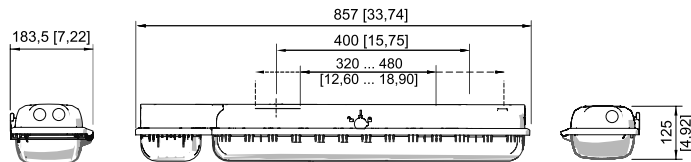
Pipe clamp fitted in mounting rail



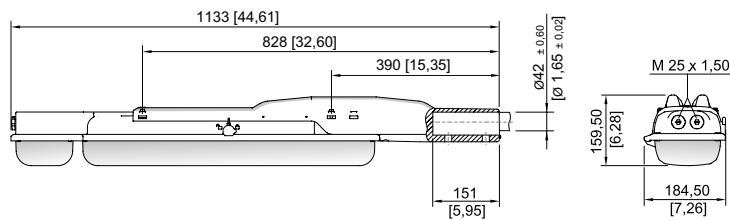
Mounting bracket fitted in mounting rail



Wall mounting bracket fitted in mounting rail



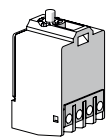
Size 2



Size 2

## Spare Parts

### Contact element

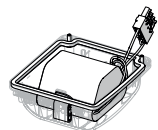


8080/1-3-L 2 NC contact element

Art. No.

132527

### Battery set



Battery cover with built-in battery. Gas-tight NiCd battery; 7 Ah / 6 V

Art. No.

223532

We reserve the right to make alterations to the technical data, dimensions, weights, designs and products available without notice. The illustrations cannot be considered binding.