

7145/54-0400-1300-0300 Art. No. 282461



- Short delivery times
- Can be used in Zone 2 without acceptance or certification
- Prefabricated and ready for use with entries, bus rails, connection terminals, etc.
- Modifications, add-ons and customer-specific adaptations possible

WebCode 7145F



With the IS1+ standard enclosures for Zone 2, we offer you a variety of prefabricated field enclosures made from stainless steel 1.4301 (V2A). They include all entries, bus rails, cable ducts and connection terminals for auxiliary power. Once the IS1+ components (available separately) have been installed, the enclosures can be used in Zone 2 without acceptance, and they fulfil the requirements of EN 61439.

Technical Data

Explosion Protection	
Application range (zones)	2
IECEX gas certificate	IECEX TUR 15.0027
IECEX gas explosion protection	Ex ec ia ib [ia Ga, ib] IIC T4 Gc
ATEX gas certificate	TÜV 18 ATEX 8178
ATEX gas explosion protection	Ex II 3 (1) G Ex ec ia ib [ia Ga, ib] IIC T4 Gc
Certificates	ATEX (TUR), IECEX (TUR)
Installation	Zone 2
Further information	Refer to operating instructions and certificates of enclosures and IS1+ modules.
Electrical Data	
Applicable IS1+ CPM modules	9440/15-01-11-C1198 (Modbus RTU)
Applicable IS1+ CPU modules	9442/35-10-00 (multi-protocol: PROFIBUS DP V1 HART, PROFIBUS DP V1 HART für PNO redundancy, Modbus TCP, PROFINET, EtherNet/IP)
Applicable IS1+ CPU modules note	CPU together with 9445/35 power module and 9496/35 socket
Usable IS1+ power modules	9445/35
Usable IS1+ base	9496/35-04
Usable IS1+ I/O modules	9470/33 9475/33 9482/33 9469/35 9471/35 9472/35 9477/15 9468/33
Applicable IS1+ modules note	Installation of the IS1+ modules must be performed in accordance with the corresponding operating instructions of the modules.
Auxiliary Power	
Auxiliary power rated operating voltage	24 V DC (20 to 35 V DC)
Auxiliary power nominal current	Max. 4 A @ 24 V DC

7145/54-0400-1300-0300 Art. No. 282461

Auxiliary Power

Auxiliary power rated current	Depending on installed modules IS1+ (see corresponding data sheet)
-------------------------------	--

Device Specific Data

Max. number of analogue I/O signals	72
Max. number of digital I/O signals	144
Max. internal power dissipation	75 W
IS1+ BusRail	1 x BusRail for 10 slots
Shield bus	2 x KLBÜ 3...8 50 x AK4
Front door	2 x cover support 6 x cam lock 1 x opening upwards

Ambient Conditions

Ambient temperature	-40°C ... +55°C
Ambient temperature	-40°F ... +122°F
Storage temperature	-40°C ... +80°C
Storage temperature	-40°F ... +176°F
Note	Refer to the technical data in the corresponding data sheets of the IS1+ modules

Mechanical Data

Connection auxiliary power	Screw connector 0.2 to 10 mm ² (4 x UTTB 4; 2 x UTTB 4-PE)
PE connection version	External M8 PE connection
PE connection clamping range	10 – 25 mm ²
IP degree of protection (IEC 60529)	IP65
Enclosure material	Stainless steel 1.4301, (V2A, AISI 304) Brush finished
Sealing material	Silicone foam gasket
Silicone-free	No
Wall thickness	2 mm
Connection cross-section	0.2 to 10 mm ²
Dimensions (WxHxD)	400 mm x 1300 mm x 300 mm
Width	400 mm
Width, inches	15.75 in
Height	1300 mm
Height, inches	51.18 in
Depth	300 mm
Depth, inches	11.81 in
Weight	30 kg
Weight	66.14 lb

Mounting / Installation

Mounting orientation	Horizontal Vertical
Connection type	Screw connector

Components

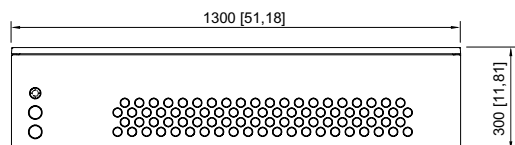
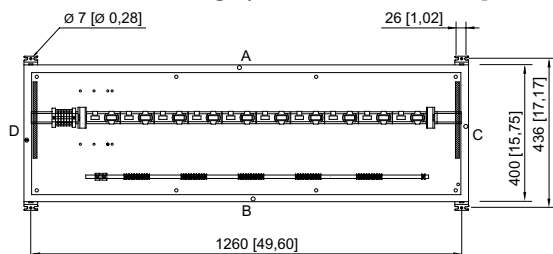
Built-in unit 1	1 x BusRail for 10 slots (1 x CPM, 9 x I/O – modules)
-----------------	--

7145/54-0400-1300-0300 Art. No. 282461

Components

Auxiliary power cable entries	2 x Black cable gland Polyamide, type 8161/7 M32 Ø 9 ... 21 mm
Cable entries signals	82 x Black cable gland Polyamide, type 8161/7 M20 Ø 4 ... 13 mm
Breather	1 x Breather, green, Polyamide, type 8162 M25 x 1,5
Type of terminals 1	4 x UTTB 4
Type of terminals PE 1	2 x UTTB 4-PE
Earth rail	Zinc galvanised (not insulated) 10 x 3 (1x)

Dimensional Drawings (All Dimensions in mm [inches]) – Subject to Alterations



1 x BusRail for 10 slots

Art. No. 282461

We reserve the right to make alterations to the technical data, dimensions, weights, designs and products available without notice. The illustrations cannot be considered binding.