

8118/211-403 Art. No. 133104



- Resistant Ex e enclosure, universally usable as connection or junction boxes and/or to safeguard electric distributors up to 6.3 A
- IP66 degree of protection
- With mantle terminals or with a combination of mantle terminals and miniature fuses (optional)

MY R. STAHL 8118A



R. STAHL Series 8118 junction boxes are equipped with 4, 5 or 8 mantle terminals depending on their design size. As an option, miniature fuses can still be installed in addition. Junction boxes are therefore also suitable for safeguarding. The robust enclosure made from glass fibre reinforced polyester resin can be equipped with plastic or metal cable glands.

Technical Data

Explosion Protection

Scope of validity	European Union (ATEX) IECEX
Application range (zones)	1 2 21 22
IECEX gas certificate	IECEX PTB 06.0026
IECEX gas explosion protection	Ex ia ib IIC T6 Gb
IECEX dust certificate	IECEX PTB 06.0026
IECEX dust explosion protection	Ex tb IIIC T80 °C Db
ATEX gas certificate	PTB 99 ATEX 3103
ATEX gas explosion protection	⊕ II 2 G Ex ia ib IIC T6 Gb
ATEX dust certificate	PTB 99 ATEX 3103
ATEX dust explosion protection	⊕ II 2 D Ex tb IIIC T80 °C Db
Certificates	ATEX (PTB), Brazil (ULB), China (NEPSI), IECEX (PTB), India (PESO)
Declaration of Conformity	China (CCC)
Explosion protection note	For product label, see scope of validity.

Electrical Data

Rated operational voltage AC	60 V
Rated operational voltage AC	0 ... 60 V
Permissible rated operational current with 5 loaded terminals	For conductor cross-section of 1.5 mm ² : 13 A For conductor cross-section of 2.5 mm ² : 18 A For conductor cross-section of 4 mm ² : 24 A
Permissible rated operational current with 4 loaded terminals	For conductor cross-section of 1.5 mm ² : 15 A For conductor cross-section of 2.5 mm ² : 19 A For conductor cross-section of 4 mm ² : 25 A
Permissible rated operational current with ≤ 3 loaded terminals	For conductor cross-section of 1.5 mm ² : 16 A For conductor cross-section of 2.5 mm ² : 20 A For conductor cross-section of 4 mm ² : 25 A

Installation equipment

Ex i junction box



8118/211-403 Art. No. 133104

Ambient Conditions

Ambient temperature	-40 °C ... +75 °C (T6)
Ambient temperature	-40°F ... +167°F (T6)

Mechanical Data

Degree of protection IP (IEC 60529)	IP66
Enclosure material	Polyester resin, Glass fibre reinforced
Enclosure colour	Dark grey
Flammability according to	IEC/EN 60695 UL 94 ASTM D635
Silicone-free	No
Permissible number of conductors per clamping unit, solid	Mantle terminal, M7 x 0.75 Conductor cross-section 1.5 mm ² : Number of conductors min. 2, max. 4 Conductor cross-section 2.5 mm ² : Number of conductors min. 2, max. 2
Permissible number of conductors per clamping unit, finely stranded prepared, core end sleeve crimped	Mantle terminal M7 x 0.75 Conductor cross-section 1.5 mm ² : Number of conductors min. 2, max. 3 Conductor cross-section 2.5 mm ² : Number of conductors min. 2, max. 2
Permissible number of conductors per clamping unit, finely stranded unprepared	Mantle terminal, M7 x 0.75 Conductor cross-section 1.5 mm ² : Number of conductors min. 2, max. 3 Conductor cross-section 2.5 mm ² : Number of conductors min. 2, max. 2
Permissible number of conductors per clamping unit note	All conductors of a terminal must have the same cross section and be made of the same material.
Cover	Screw-on cover
Cover fixing type	M4 stainless steel screws, With captive screws
Width	85 mm
Width, inches	3.35 in
Height	85 mm
Height, inches	3.35 in
Depth	55 mm
Depth, inches	2.17 in
Packaging unit	1
Weight	330 g
Weight	0.73 lb

Mounting / Installation

Tightening torque of cover screw 1	1.4 Nm
Tightening torque of cover screw 1 lbf in	12.4 lbf in

Components

Entry 1	3 x 8161/8-M20-1304 (Provided separately)
Entry 1 type	Polyamide cable gland, blue
Entry 1	M20 x 1.5
Entry 1 terminal area	7 – 17 mm
Entry 1 clamping range, inch	0.28 – 0.67 in
Metal entry possible 1	No
Entry 2	1 x 8290/3-M20 (Provided separately)
Entry 2 type	Polyamide stopping plug
Entry 2	M20 x 1.5

8118/211-403 Art. No. 133104

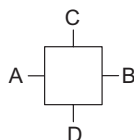
Components

Metal entry possible 2	No
Entries installation options/side	Size 1: 4x M20 (A+B+C+D)
Type of terminals 1	4 x Mantle terminal 4 mm ²

Technical Drawings – Subject to Alterations

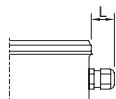
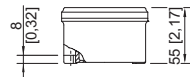


Four terminals



"—" = marking for mounting options

Dimensional Drawings (All Dimensions in mm [inches]) – Subject to Alterations



Length L

Projection dimension for cable gland of Series 8161:

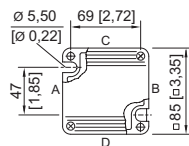
For M20: 25 to 31 [0.98 to 1.22]

For M25: 27 to 33 [1.06 to 1.3]

For M32: 32 to 39 [1.26 to 1.54]

Projection dimension for cable gland with strain relief of Series HSK-K-MZ

For M25: 41 [1.61]



8118/1.
Enclosure SZ 1

Accessories

Plastic cable gland



8161/8-M20-1304, Ex i
Plastic, M20 x 1.5, cable outer diameter 4 to 13 mm
Lot size 50 pieces

Art. No.

239164

Stopping plug



8290/3-M20
Plastic, M20 x 1.5
Lot size 100 pieces

Art. No.

285773

Brass plate with thread



8118 SZ 1, plate 37 x 30 mm [1.46 x 1.18 inch]
1 x M20 x 1.5 with M4 PE connection (left)
Can be installed in enclosures of SZ 1, SZ 2 and SZ 3

Art. No.

168913



8118 SZ 1, plate 37 x 30 mm [1.46 x 1.18 inch]
1 x M20 x 1.5 with M4 PE connection (right)
Can be installed in enclosures of SZ 1, SZ 2 and SZ 3

Art. No.

168914

We reserve the right to make alterations to the technical data, dimensions, weights, designs and products available without notice. The illustrations cannot be considered binding.