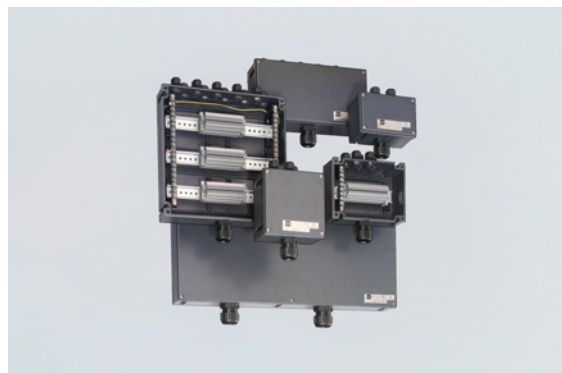


8146/1051 Art. No. 136692



- Wide range of Ex e terminal boxes in various sizes and materials, degree of protection IP66
- Customised equipping in accordance with customer specifications
- Enclosures with captive cover screws, if required, flange on enclosure sides is possible

MY R. STAHL 8146A



R. STAHL Series 8146 terminal boxes, made of high-quality, glass fibre-reinforced polyester resin, are ideal for use in harsh operating conditions. With eight basic sizes in various heights, they are universally usable. If requested by the customer, they are equipped with series terminals up to 300 mm² and, as an option, a flange on several enclosure sides is possible.

Technical Data

Explosion Protection

| | |
|---------------------------------|--|
| Scope of validity | European Union (ATEX) IECEX United Kingdom |
| Application range (zones) | 1 2 21 22 |
| IECEX gas certificate | IECEX PTB 06.0046 |
| IECEX gas explosion protection | Ex eb IIC T6 / T5 Gb |
| IECEX dust certificate | IECEX PTB 06.0046 |
| IECEX dust explosion protection | Ex tb IIIC T80 °C / T95 °C Db |
| ATEX gas certificate | PTB 01 ATEX 1016 |
| ATEX gas explosion protection | ⊕ II 2 G Ex eb IIC T6 / T5 Gb |
| ATEX dust certificate | PTB 01 ATEX 1016 |
| ATEX dust explosion protection | ⊕ II 2 D Ex tb IIIC T80 °C / T95 °C Db |
| Certificates | ATEX (PTB), Brazil (ULB), Canada / USA (UL), Canada (UL), China (NEPSI), IECEX (PTB), Korea (KGS), Taiwan (ITRI), USA (UL) |
| Declaration of Conformity | ATEX (EUK), China (CCC) |
| Explosion protection note | Product label may vary. Series devices have certification according to ATEX and IECEX. |

Electrical Data

| | |
|------------------------------|-------------|
| Rated operational voltage AC | 0 ... 500 V |
|------------------------------|-------------|

Ambient Conditions

| | |
|---------------------|--|
| Ambient temperature | -60 °C ... +40 °C (T6) -60 °C ... +55 °C (T5) |
| Ambient temperature | -76 °F ... +104 °F (T6) -76 °F ... +131 °F (T5) |

Mechanical Data

| | |
|-------------------------------------|------|
| Degree of protection IP (IEC 60529) | IP66 |
|-------------------------------------|------|

8146/1051 Art. No. 136692

Mechanical Data

| | |
|---------------------------|---|
| Enclosure material | Polyester resin, Glass fibre reinforced |
| Enclosure colour | Dark grey |
| Flammability according to | IEC/EN 60695 UL 94 ASTM D635 |
| Silicone-free | No |
| Cover thickness | 2.8 mm |
| Cover thickness inch | 0.11 in |
| Wall thickness | 2.8 mm |
| Wall thickness, inches | 0.11 in |
| Width | 170 mm |
| Width, inches | 6.692 in |
| Height | 170 mm |
| Height, inches | 6.692 in |
| Depth | 91 mm |
| Depth, inches | 3.583 in |
| Weight | 1.07 kg |
| Weight | 2.36 lb |

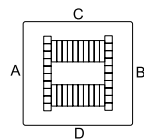
Mounting / Installation

| | |
|---|--------------|
| Tightening torque of cover screw 1 | 4.5 Nm |
| Tightening torque of cover screw 1 lbf in | 39.83 lbf in |

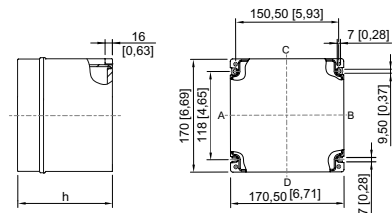
Components

| | |
|-----------------------------------|--|
| Flange and plates | Without flange |
| Entries installation options/side | Without drilled holes |
| Entries | None |
| Terminal rail | 15 x 133 mm (2x) |
| Terminal rail | 0,59 x 5,24 " (2x) |
| Type of terminals 1 | 1 x Phoenix MBK 2-conductor, 2.5 mm ² , grey |
| Earth rail | 7 x 4 mm ² (1x) |

Technical Drawings – Subject to Alterations







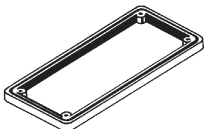
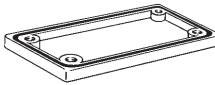
Dimensional Drawings (All Dimensions in mm [inches]) – Subject to Alterations



8146/.05.
8146/.051: h = 91 mm [3.58 inch]
8146/.052: h = 131 mm [5.16 inch]

8146/1051 Art. No. 136692

Spare Parts

| 2 mm brass plate for enclosure | | Art. No. |
|--|---|----------|
|  | For 8146/.051, 8146/.052 (enclosure sides A/B) 8146/.S71 (enclosure sides A/B) | 136914 |
| | For 8146/.051, 8146/.052 (enclosure sides C/D) 8146/.061, 8146/.062 (enclosure sides A/B) 8146/.071, 8146/.072 (enclosure sides A/B) | 136921 |
| 2 mm brass plate for flanges | | Art. No. |
|  | For flange size 1 (68 x 128 mm) | 136888 |
| 3 mm brass plate for enclosure | | Art. No. |
|  | For 8146/.051, 8146/.052 (enclosure sides A/B) 8146/.S71 (enclosure sides A/B) | 136240 |
| 3 mm brass plate for flanges | | Art. No. |
|  | For flange size 1 (68 x 128 mm) | 136201 |
| Frame | | Art. No. |
|  | Size 1, 68 x 128 mm | 135974 |
| Flange | | Art. No. |
|  | Size 1: 68 x 128 mm, 5.8 mm thick | 136032 |
| | Size 1: 68 x 128 mm, 2.8 mm thick | 135978 |

We reserve the right to make alterations to the technical data, dimensions, weights, designs and products available without notice. The illustrations cannot be considered binding.