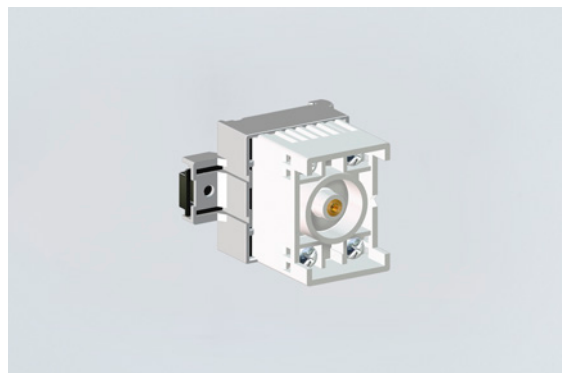


# Control Devices

Control unit With 4 diodes for lamp test

Type 1N4005

8208/14-02-0002 Art. No. 140666



- Flameproof encapsulated diode module
- Versions with different internal wiring
- Universally applicable for various control tasks
- Wide operating temperature range
- Four screw terminals with two clamping points each in increased safety (Ex e)
- Large clamping range for solid or stranded wires
- For installation in Ex e enclosures on serrated mounting rail
- International certificates available

## MY R. STAHL 8208D



The flameproof diode module in the universal enclosure 8208 can be used for various control tasks in hazardous areas. The compact device is designed for installation in enclosures with type of protection increased safety (Ex e). It is mounted on a serrated mounting rail. Four Ex e screw terminals with two clamping points each are available for the electrical connection.

## Technical Data

Explosion Protection			
Application range (zones)	1 2		
IECEX gas certificate	IECEX PTB 06.0032 U		
IECEX gas explosion protection	Ex db eb IIC T6 Gb		
ATEX gas certificate	PTB 01 ATEX 1066 U		
ATEX gas explosion protection	Ex II 2 G Ex db eb IIC T6 Gb		
CSA gas certificate	CSA 1773803		
PESO gas certificate	P148651		
PESO gas explosion protection	Ex db eb IIC T6 Gb		
Inmetro gas certificate	ULBR140223U		
Certificates	ATEX (PTB), Brazil (ULB), China (CQST), IECEX (PTB), SIL (exida)		
Electrical Data			
Rated operational voltage DC	500 V		
Rated operational current	1 A (T6)		
Cut-off voltage	600 V		
Ambient Conditions			
Ambient temperature	-50 °C ... +60 °C		
Note	see "Max. power" table		
Max. power	<b>Maximum internal heat distribution</b> (Connection to 1.5 mm <sup>2</sup> conductor cross-section and maximum 5 A)		
	Ambient temperature		Ambient temperature
	max. 40 °C		max. 60 °C
	T <sub>surface</sub> = max. 80 °C	T <sub>surface</sub> = max. 95 °C	T <sub>surface</sub> = max. 80 °C
3.0 W	4.75 W	1.5 W	2.0 W
Mechanical Data			
Version	with 4 diodes for lamp test		
Enclosure material	Polyamide		

# Control Devices



Control unit With 4 diodes for lamp test

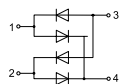
Type 1N4005

8208/14-02-0002 Art. No. 140666

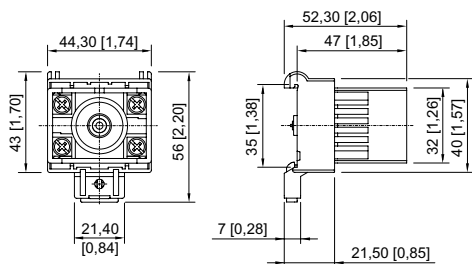
## Mechanical Data

Silicone-free	Yes
Connection cross-section	2.5 mm <sup>2</sup>
Max. connection cross-section, finely stranded	2,5 mm <sup>2</sup>
Solid connection cross section	1.5 – 2.5 mm <sup>2</sup>
Finely stranded connection cross section	1.5 – 2.5 mm <sup>2</sup>
Connection cross-section, finely stranded with core end sleeve	1.5 – 2.5 mm <sup>2</sup>
Type of connection cable	Finely stranded Solid
Weight	300 g
Weight	0.66 lb

## Technical Drawings – Subject to Alterations



## Dimensional Drawings (All Dimensions in mm [inches]) – Subject to Alterations



We reserve the right to make alterations to the technical data, dimensions, weights, designs and products available without notice. The illustrations cannot be considered binding.