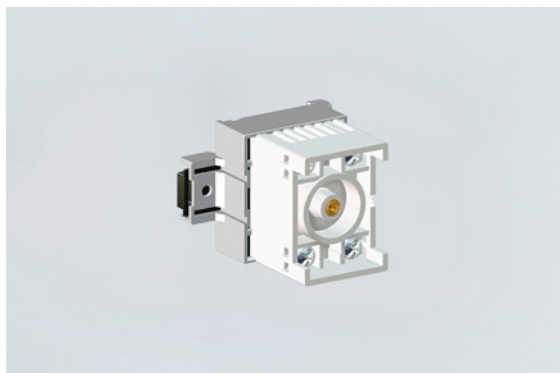


8208/14-06-0011 Art. No. 140670



- Flameproof relay module
- Potential-free switching contact
- Universally usable for a range of control tasks
- Wide service temperature range
- Four screw terminals each with two clamping units with increased safety (Ex e)
- For installation in an Ex e enclosure on a toothed mounting rail
- International certificates available

MY R. STAHL 8208C



The flameproof relay module in the 8208 universal enclosure is versatile enough to be used for various different control tasks in hazardous areas. This compact device is designed for installation in enclosures with increased safety (Ex e) type of protection. It is mounted on a toothed mounting rail. Four Ex e screw terminals each with two clamping units are available for the electrical connection.

Technical Data

Explosion Protection

Application range (zones)	1, 2
IECEX gas certificate	IECEX PTB 06.0032 U
IECEX gas certificate	IECEX PTB 06.0032 U
IECEX gas explosion protection	Ex db eb IIC T6 Gb
ATEX gas certificate	PTB 01 ATEX 1066 U
ATEX gas certificate	PTB 01 ATEX 1066 U
ATEX gas explosion protection	Ex II 2 G Ex db eb IIC T6 Gb
PESO gas certificate	PESO P148651
PESO gas explosion protection	Ex db eb IIC T6 Gb
Inmetro gas certificate	ULBR140223U
Certificates	ATEX (PTB), Brazil (ULB), China (CQST), IECEX (PTB), SIL (exida)
Explosion protection note	Product label may vary. Series devices are labelled with ATEX and IECEX.

Electrical Data

Rated operational voltage AC	115 V
Rated actuating voltage	115 V AC
Switching capacity	5 A/250 V/AC1
Frequency Hz (for AC)	50
Type of voltage	AC

Ambient Conditions

Ambient temperature	-40 °C ... 60 °C
Note	see "Max. power" table

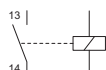
8208/14-06-0011 Art. No. 140670

Max. power	Maximum internal heat distribution (connection with 1.5 mm ² conductor cross-section and maximum 5 A)			
	Ambient temperature		Ambient temperature	
	max. 40 °C		max. 60 °C	
	T _{surface} = max. 80 °C	T _{surface} = max. 95 °C	T _{surface} = max. 80 °C	T _{surface} = max. 95 °C
	3.0 W	4.75 W	1.5 W	2.0 W

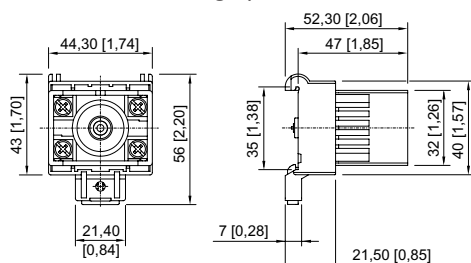
Mechanical Data

Enclosure material	Polyamide
Silicone-free	Yes
Connection cross-section	2.5 mm ²
Max. connection cross section, solid	2,5 mm ²
Max. connection cross-section, finely stranded	2,5 mm ²
Solid connection cross section	1.5 – 2.5 mm ²
Finely stranded connection cross section	1.5 – 2.5 mm ²
Connection cross-section, finely stranded with core end sleeve	1.5 – 2.5 mm ²
Number of relays	1
Number of relay contacts	1 NO
Type of connection cable	Finely stranded Solid
Width	44 mm
Height	56 mm
Depth	52.5 mm
Weight	90 g
Weight	0.2 lb

Technical Drawings – Subject to Alterations



Dimensional Drawings (All Dimensions in mm [inches]) – Subject to Alterations



We reserve the right to make alterations to the technical data, dimensions, weights, designs and products available without notice. The illustrations cannot be considered binding.