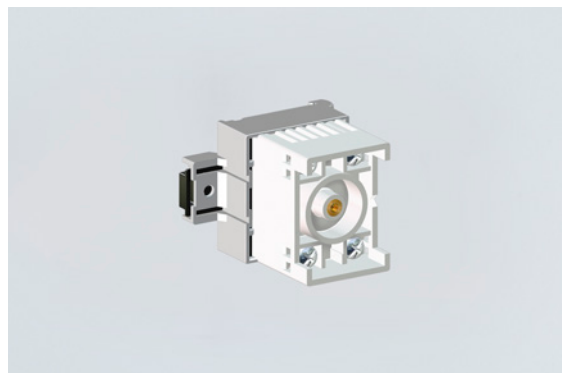


8208/14-06-0021 Art. No. 140676



- Flameproof encapsulated relay module
- Floating switching contact
- Universally applicable for various control tasks
- Wide operating temperature range
- Four screw terminals with two clamping points each in increased safety (Ex e)
- Large clamping range for solid or stranded wires
- For installation in Ex e enclosures on serrated mounting rail
- International certificates available

MY R. STAHL 8208C



The flameproof relay module in the universal housing 8208 can be used for various control tasks in hazardous areas. The compact device is designed for installation in enclosures with type of protection increased safety (Ex e). It is mounted on a serrated mounting rail. Four Ex e screw terminals with two clamping points each are available for the electrical connection.

Technical Data

Explosion Protection

| | |
|--------------------------------|--|
| Application range (zones) | 1 2 |
| IECEX gas certificate | IECEX PTB 06.0032 U |
| IECEX gas explosion protection | Ex db eb IIC T6 Gb |
| ATEX gas certificate | PTB 01 ATEX 1066 U |
| ATEX gas explosion protection | Ex II 2 G Ex db eb IIC T6 Gb |
| CSA gas certificate | CSA 1773803 |
| PESO gas certificate | PESO P148651 |
| PESO gas explosion protection | Ex db eb IIC T6 Gb |
| Inmetro gas certificate | ULBR140223U |
| Certificates | ATEX (PTB), Brazil (ULB), China (CQST), IECEX (PTB), SIL (exida) |

Electrical Data

| | |
|------------------------------|---------------|
| Rated operational voltage AC | 115 V |
| Rated actuating voltage | 115 V AC |
| Switching capacity | 5 A/250 V/AC1 |
| Frequency Hz (for AC) | 50 |
| Type of voltage | AC |

Ambient Conditions

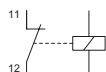
| | | | | |
|---------------------|--|-----------------------------------|-----------------------------------|-----------------------------------|
| Ambient temperature | -40 °C ... +60 °C | | | |
| Note | see "Max. power" table | | | |
| Max. power | Maximum internal heat distribution (Connection to 1.5 mm ² conductor cross-section and maximum 5 A) | | | |
| | Ambient temperature | | Ambient temperature | |
| | max. 40 °C | | max. 60 °C | |
| | T _{surface} = max. 80 °C | T _{surface} = max. 95 °C | T _{surface} = max. 80 °C | T _{surface} = max. 95 °C |
| | 3.0 W | 4.75 W | 1.5 W | 2.0 W |

8208/14-06-0021 Art. No. 140676

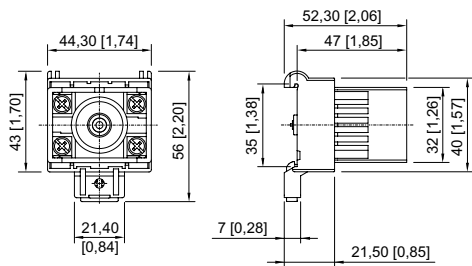
Mechanical Data

| | |
|--|---------------------------|
| Enclosure material | Polyamide |
| Silicone-free | Yes |
| Connection cross-section | 2.5 mm ² |
| Max. connection cross-section, finely stranded | 2,5 mm ² |
| Solid connection cross section | 1.5 – 2.5 mm ² |
| Finely stranded connection cross section | 1.5 – 2.5 mm ² |
| Connection cross-section, finely stranded with core end sleeve | 1.5 – 2.5 mm ² |
| Number of relays | 1 |
| Number of relay contacts | 1 NC |
| Type of connection cable | Finely stranded Solid |
| Width | 44 mm |
| Height | 56 mm |
| Depth | 52.5 mm |
| Weight | 90 g |
| Weight | 0.2 lb |

Technical Drawings – Subject to Alterations



Dimensional Drawings (All Dimensions in mm [inches]) – Subject to Alterations



We reserve the right to make alterations to the technical data, dimensions, weights, designs and products available without notice. The illustrations cannot be considered binding.