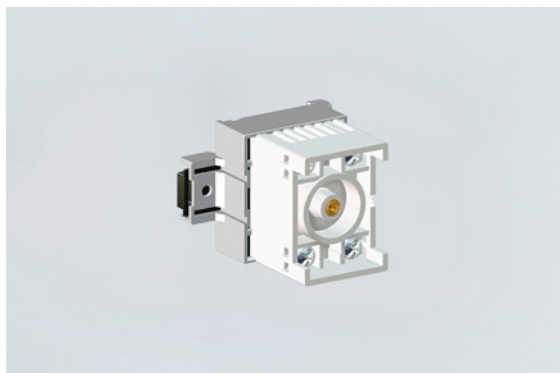


8208/14-06-0030 Art. No. 140681



- Flameproof encapsulated relay module
- Floating switching contact
- Universally applicable for various control tasks
- Wide operating temperature range
- Four screw terminals with two clamping points each in increased safety (Ex e)
- Large clamping range for solid or stranded wires
- For installation in Ex e enclosures on serrated mounting rail
- International certificates available

MY R. STAHL 8208C



The flameproof relay module in the universal housing 8208 can be used for various control tasks in hazardous areas. The compact device is designed for installation in enclosures with type of protection increased safety (Ex e). It is mounted on a serrated mounting rail. Four Ex e screw terminals with two clamping points each are available for the electrical connection.

## Technical Data

### Explosion Protection

Application range (zones)	1 2
IECEX gas certificate	IECEX PTB 06.0032 U
IECEX gas explosion protection	Ex db eb IIC T6 Gb
ATEX gas certificate	PTB 01 ATEX 1066 U
ATEX gas explosion protection	Ex II 2 G Ex db eb IIC T6 Gb
CSA gas certificate	CSA 1773803
PESO gas certificate	PESO P148651
PESO gas explosion protection	Ex db eb IIC T6 Gb
Inmetro gas certificate	ULBR140223U
Certificates	ATEX (PTB), Brazil (ULB), China (CQST), IECEX (PTB), SIL (exida)

### Electrical Data

Rated operational voltage DC	24 V
Rated actuating voltage	24 V DC
Type of voltage	DC

### Ambient Conditions

Ambient temperature	-40 °C ... +60 °C			
Note	see "Max. power" table			
Max. power	<b>Maximum internal heat distribution</b> (Connection to 1.5 mm <sup>2</sup> conductor cross-section and maximum 5 A)			
	Ambient temperature		Ambient temperature	
	max. 40 °C		max. 60 °C	
	T <sub>surface</sub> = max. 80 °C	T <sub>surface</sub> = max. 95 °C	T <sub>surface</sub> = max. 80 °C	T <sub>surface</sub> = max. 95 °C
3.0 W	4.75 W	1.5 W	2.0 W	

### Mechanical Data

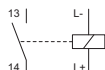
Enclosure material	Polyamide
Silicone-free	Yes

8208/14-06-0030 Art. No. 140681

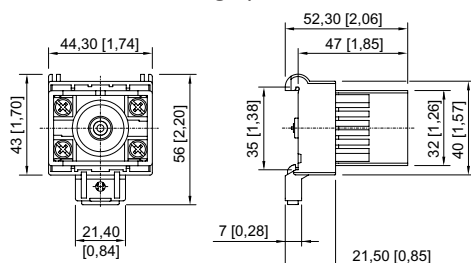
### Mechanical Data

Connection cross-section	2.5 mm <sup>2</sup>
Max. connection cross-section, finely stranded	2,5 mm <sup>2</sup>
Solid connection cross section	1.5 – 2.5 mm <sup>2</sup>
Finely stranded connection cross section	1.5 – 2.5 mm <sup>2</sup>
Connection cross-section, finely stranded with core end sleeve	1.5 – 2.5 mm <sup>2</sup>
Number of relays	1
Number of relay contacts	1 NO
Type of connection cable	Finely stranded Solid
Width	44 mm
Height	56 mm
Depth	52.5 mm
Weight	90 g
Weight	0.2 lb

### Technical Drawings – Subject to Alterations



### Dimensional Drawings (All Dimensions in mm [inches]) – Subject to Alterations



We reserve the right to make alterations to the technical data, dimensions, weights, designs and products available without notice. The illustrations cannot be considered binding.