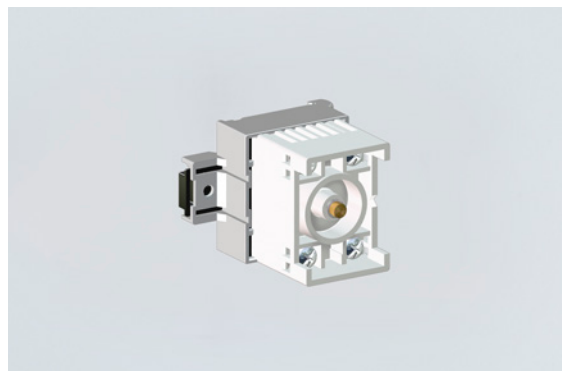


8208/24-15-0002 Art. No. 140707



- Flameproof enclosed snap-action switch
- Versions with and without resistor circuit
- Universally applicable for various control tasks
- Wide operating temperature range
- Four screw terminals with two clamping points each in increased safety (Ex e)
- Large clamping range for solid or stranded wires
- For installation in Ex e enclosures on serrated mounting rail
- International certificates available

MY R. STAHL 8208E



The flameproof enclosed snap-action switch in the universal housing 8208 can be used in a variety of ways for different control tasks in potentially explosive atmospheres. The compact device is designed for installation in enclosures with type of protection increased safety (Ex e). It is mounted on a serrated mounting rail. Four Ex e screw terminals with two clamping points each are available for the electrical connection.

We recommend using the actuating elements of the 8602 series for this purpose.

Technical Data

Explosion Protection

| | |
|--------------------------------|--|
| Scope of validity | European Union (ATEX) IECEX |
| Application range (zones) | 1 2 |
| IECEX gas certificate | IECEX PTB 06.0032U |
| IECEX gas explosion protection | Ex db eb IIC T6 Gb |
| ATEX gas certificate | PTB 01 ATEX 1066 U |
| ATEX gas explosion protection | Ⓔ II 2 G Ex db eb IIC T6 Gb |
| Inmetro gas certificate | ULBR140223U |
| Certificates | ATEX (PTB), Brazil (ULB), China (CQST), IECEX (PTB), SIL (exida) |

Functional Safety

| | |
|-------------|---|
| SIL-capable | without actuator or with actuators 8602C3-006, 8602C3-009, 8602C3-010, 8602C3-012 |
|-------------|---|

Electrical Data

| | |
|---------------------------------|----------------------------------|
| Rated operational voltage DC | 30 V |
| Max. rated operational voltage | 0 V |
| Rated insulation voltage | 250 V |
| Switching capacity AC-15, 230 V | 1,5 A |
| Mechanical service life | 15 ⁶ operating cycles |
| Rated surge voltage | 2.5 kV |
| Switching capacity DC-13, 60 V | 0,5 A |
| No. of poles | 2 |

Ambient Conditions

| | |
|---------------------|------------------------|
| Ambient temperature | -40 °C ... +60 °C |
| Note | see "Max. power" table |

8208/24-15-0002 Art. No. 140707

| | | |
|------------|--|-----------------------------------|
| Max. power | Maximum internal heat distribution (Connection to 1.5 mm ² conductor cross-section and maximum 5 A) | |
| | Ambient temperature | Ambient temperature |
| | max. 40 °C | max. 60 °C |
| | T _{surface} = max. 80 °C | T _{surface} = max. 80 °C |
| | 2.0 W | 1.0 W |

Mechanical Data

| | |
|--|---------------------------|
| Enclosure material | Polyamide |
| Contact material | Gold-plated |
| Silicone-free | Yes |
| Connection cross-section | 2.5 mm ² |
| Max. connection cross-section, finely stranded | 2,5 mm ² |
| Solid connection cross section | 1.5 – 2.5 mm ² |
| Finely stranded connection cross section | 1.5 – 2.5 mm ² |
| Connection cross-section, finely stranded with core end sleeve | 1.5 – 2.5 mm ² |
| Number of NCs | 2 |
| Positive opening operation | Yes |
| Type of connection cable | Solid Finely stranded |
| Contacts | 2 NC 10k/1k |
| Packaging unit | 1 |
| Weight | 100 g |
| Weight | 0.221 lb |

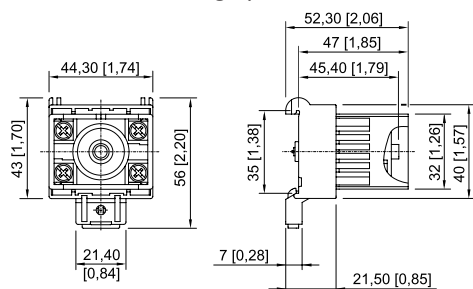
Mounting / Installation

| | |
|-----------------|----------------|
| Connection type | Screw terminal |
|-----------------|----------------|

Technical Drawings – Subject to Alterations



Dimensional Drawings (All Dimensions in mm [inches]) – Subject to Alterations



We reserve the right to make alterations to the technical data, dimensions, weights, designs and products available without notice. The illustrations cannot be considered binding.