

8510/112-07-209-021 Art. No. 202157



- Type-tested standard components for time-delayed switching
- Time delays up to 300 hours, wide-range control voltage
- Recurrence and on-delay variants, also with time-delay function

MY R. STAHL 85100



The R. STAHL Series 8510 time relay is a type-tested standard component for time-delayed switching – with a delay of up to 300 hours. It is available in recurrence and on-delay variants, also with time-delay function (only Y-Δ time relay), and with various contact types. The corrosion-resistant enclosure and can be fitted in Ex e enclosures using an anti-vibration screw connection.

### Technical Data

#### Explosion Protection

|                                |   |
|--------------------------------|---|
| Ex version                     | Yes                                     |
| Application range (zones)      | 1<br>2                                  |
| IECEX gas certificate          | IECEX BVS 07.0029U                      |
| IECEX gas explosion protection | Ex de IIC                               |
| IECEX firedamp certificate     | IECEX BVS 07.0029U                      |
| IECEX firedamp protection      | Ex de I                                 |
| ATEX gas certificate           | DMT 00 ATEX E 073 U                     |
| ATEX gas explosion protection  | ⊕ II 2 G Ex de IIC                      |
| ATEX firedamp certificate      | DMT 00 ATEX E 073 U                     |
| ATEX firedamp protection       | ⊕ I M2 Ex de I                          |
| Certificates                   | Brazil (ULB), China (CQST), IECEX (BVS) |

#### Electrical Data

|                            |                            |
|----------------------------|----------------------------|
| AC rated actuation voltage | 24 – 240 V                 |
| DC rated actuation voltage | 24 – 48 V                  |
| Frequency Hz (for AC)      | 60<br>50                   |
| Auxiliary contacts         | 2 (2 change-over contacts) |

#### Ambient Conditions

|                     |                   |
|---------------------|-------------------|
| Ambient temperature | -20 °C ... +60 °C |
|---------------------|-------------------|

#### Mechanical Data

|   |                      |
|---|----------------------|
| Degree of protection (IP)                 | IP20                 |
| Enclosure material                        | Epoxy resin          |
| Min. connection terminals                 | 0.75 mm <sup>2</sup> |
| Max. solid connection terminals           | 2.5 mm <sup>2</sup>  |
| Max. finely stranded connection terminals | 1.5 mm <sup>2</sup>  |

8510/112-07-209-021 Art. No. 202157

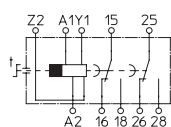
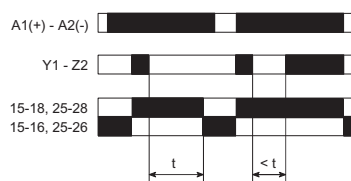
### Mechanical Data

|                          |                          |
|--------------------------|--------------------------|
| Type of connection cable | Solid<br>Finely stranded |
| Width                    | 48 mm                    |
| Height                   | 130 mm                   |
| Depth                    | 168 mm                   |
| Weight                   | 1.25 kg                  |
| Weight                   | 2.76 lb                  |

### Components

|                 |        |
|-----------------|--------|
| Min. time range | 0,05 s |
| Max. time range | 300 h  |

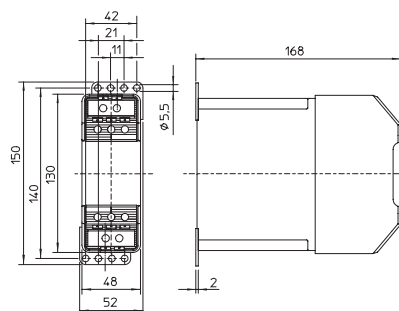
### Technical Drawings – Subject to Alterations



OFF delay relay with power supply  
Timing range: 0.05 s to 300 h

OFF delay relay with power supply  
Timing range: 0.05 s to 300 h

### Dimensional Drawings (All Dimensions in mm [inches]) – Subject to Alterations



8510/112

We reserve the right to make alterations to the technical data, dimensions, weights, designs and products available without notice. The illustrations cannot be considered binding.