

8265/01-0010 Art. No. 211086



- Six basic enclosure sizes, optional inspection windows, direct and indirect cable entry possible
- International certification, wide temperature range, seawater-resistant light-metal enclosure
- Suitable series 8146/8150 connection-chamber enclosures possible

### MY R. STAHL 8265A



R. STAHL series 8265 Ex d enclosures are ideal for motor control units, control boxes and terminal boxes. We equip these with various components, including sparking equipment, according to customer requirements. The cable entry can be direct or indirect. The large cover opening makes commissioning and maintenance easier. Single enclosures are ideal as components in Ex e control systems. Optional, large inspection window possible.

## Technical Data

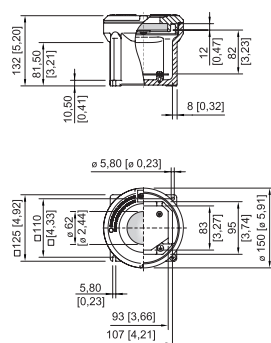
Explosion Protection	
Application range (zones)	1, 2, 21, 22
IECEX gas certificate	IECEX PTB 07.0027 U
IECEX gas explosion protection	Ex db eb IIC Gb
IECEX dust certificate	IECEX PTB 07.0027 U
IECEX dust explosion protection	Ex tb IIIC Db
ATEX gas certificate	PTB 06 ATEX 1023 U
ATEX gas explosion protection	Ex II 2 G Ex db eb IIC Gb
ATEX dust certificate	PTB 06 ATEX 1023 U
ATEX dust explosion protection	Ex II 2 D Ex tb IIIC Db
Certificates	ATEX (PTB), Brazil (ULB), China (NEPSI), IECEX (PTB), Taiwan (ITRI)
Declaration of conformity	Certificate of conformity (ATEX), China (CCC)
Ambient Conditions	
Ambient temperature	-50 °C ... +60 °C
Ambient temperature	-58 °F ... +140 °F
Mechanical Data	
Degree of protection (IP)	IP54
Note on degree of protection	IP66 with O-ring silicone -60 °C ... +60 °C
Enclosure material	Aluminium, copper-free, Seawater-resistant
Enclosure colour	without
Material note	Where there will be direct contact with seawater, a coating is recommended.
Clamping range max.	95 mm <sup>2</sup>
Cover	With inspection window
Design	Without entry
Width	125 mm
Width, inches	4.92 in
Height	132 mm

8265/01-0010 Art. No. 211086

### Mechanical Data

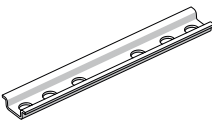
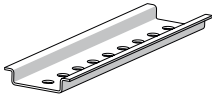
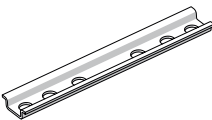
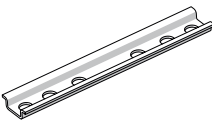
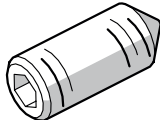
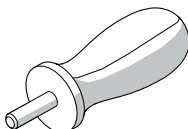
Height in inches	5.2 in
Length	125 mm
Length in inches	4.92 in
Diameter	150 mm
Diameter inch	5.91 in
Enclosure size	1
Weight	2.77 kg
Weight	6.11 lb

### Dimensional Drawings (All Dimensions in mm [inches]) – Subject to Alterations



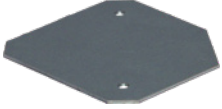
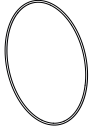
Size 1 enclosure with sight glass

### Accessories

Mounting rail		Art. No.
	TS15 length: 90 mm [3.54 inch], diagonal for size 1 enclosure	212338
	TS35 length: 90 mm [3.54 inch], diagonal for size 1 enclosure	212339
	TS35 length: 80 mm [3.15 inch] for size 1 enclosure	212424
	TS15 length: 80 mm [3.15 inch] for size 1 enclosure	212425
Threaded pin		Art. No.
	M5x16-A2 with hexagon socket and pointed tip	110216
Box spanner		Art. No.
	for opening a size 1, 2, 3, 4 enclosure cover two box spanners are required	142059

8265/01-0010 Art. No. 211086

### Spare Parts

		Art. No.
<b>Mounting plate</b>		
	for size 1 enclosure M5 x 8 screws are not included in the delivery	208862
<b>O-ring</b>		
	Silicone, for size 1 enclosure	305498

We reserve the right to make alterations to the technical data, dimensions, weights, designs and products available without notice. The illustrations cannot be considered binding.