

8265/01-0000 Art. No. 211112



- Six basic enclosure sizes, optional inspection windows, direct and indirect cable entry possible
- International certification, wide temperature range, seawater-resistant light-metal enclosure
- Suitable series 8146/8150 connection-chamber enclosures possible

MY R. STAHL 8265A



R. STAHL series 8265 Ex d enclosures are ideal for motor control units, control boxes and terminal boxes. We equip these with various components, including sparking equipment, according to customer requirements. The cable entry can be direct or indirect. The large cover opening makes commissioning and maintenance easier. Single enclosures are ideal as components in Ex e control systems. Optional, large inspection window possible.

Technical Data

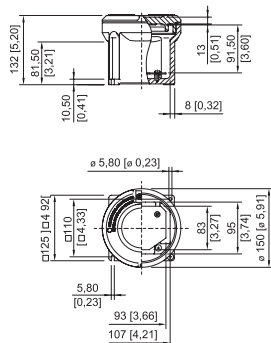
| Explosion Protection | |
|---------------------------------|---|
| Application range (zones) | 1 2 21 22 |
| IECEX gas certificate | IECEX PTB 07.0027 U |
| IECEX gas explosion protection | Ex db eb IIC Gb |
| IECEX dust certificate | IECEX PTB 07.0027 U |
| IECEX dust explosion protection | Ex tb IIIC Db |
| ATEX gas certificate | PTB 06 ATEX 1023 U |
| ATEX gas explosion protection | Ex II 2 G Ex db eb IIC Gb |
| ATEX dust certificate | PTB 06 ATEX 1023 U |
| ATEX dust explosion protection | Ex II 2 D Ex tb IIIC Db |
| Marking cULus | Class I, Div. 1, Groups A, B, C & D Class I, Zone 1, Group IIC Class II, Div. 1, Groups E, F & G Class III |
| Certificates | ATEX (PTB), Brazil (ULB), China (NEPSI), IECEX (PTB), Taiwan (ITRI) |
| Declaration of Conformity | Certificate of conformity (ATEX) |
| Ambient Conditions | |
| Ambient temperature | -50 °C ... +60 °C |
| Ambient temperature | -58°F ... +140°F |
| Mechanical Data | |
| Degree of protection (IP) | IP54 |
| Note on degree of protection | IP66 with O-ring silicone -60 °C ... +60 °C |
| Enclosure material | Aluminium, copper-free, Seawater-resistant |
| Enclosure colour | without |
| Material note | Where there will be direct contact with seawater, a coating is recommended. |

8265/01-0000 Art. No. 211112

Mechanical Data

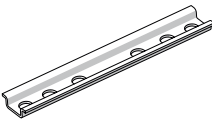
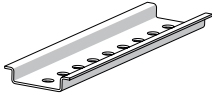

| | |
|---------------------|--------------------|
| Clamping range max. | 95 mm ² |
| Cover | Closed |
| Design | Without entry |
| Width | 125 mm |
| Width in inches | 4.92 in |
| Height | 132 mm |
| Height, inches | 5.2 in |
| Length | 125 mm |
| Length, inches | 4.92 in |
| Diameter | 150 mm |
| Diameter inch | 5.91 in |
| Enclosure size | 1 |
| Weight | 2.75 kg |
| Weight | 6.06 lb |

Dimensional Drawings (All Dimensions in mm [inches]) – Subject to Alterations

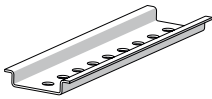
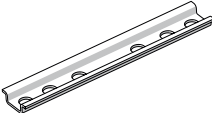


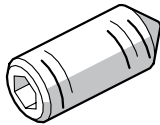
Enclosure size 1 without inspection window

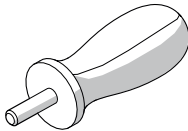
Accessories

| Mounting rail | | Art. No. |
|--|---|----------|
|  | TS15 length: 90 mm [3.54 inch], diagonal for enclosure size 1 | 212338 |
|  | TS35 length: 90 mm [3.54 inch], diagonal for enclosure size 1 | 212339 |
| Cover without sight glass | | Art. No. |
|  | Enclosure: 8265/.1-0000 | 208861 |

8265/01-0000 Art. No. 211112

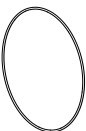
| Mounting rail | | Art. No. |
|--|--|-----------------|
|  | TS35 length: 80 mm [3.15 in] for enclosure size 1 | 212424 |
|  | TS15 length: 80 mm [3.15 in] for enclosure size 1 | 212425 |

| Threaded pin | | Art. No. |
|--|-------------------------------------|-----------------|
|  | M5x16-A2 with allen screw and point | 110216 |

| Box spanner | | Art. No. |
|--|---|-----------------|
|  | to open the enclosure cover for size 1, 2, 3, 4 2 box spanner are required | 142059 |

Spare Parts

| Mounting plate | | Art. No. |
|--|---|-----------------|
|  | for enclosure size 1 M5 x 8 screws are not included. | 208862 |

| O-ring | | Art. No. |
|--|--------------------------------|-----------------|
|  | silicone, for enclosure size 1 | 305498 |

We reserve the right to make alterations to the technical data, dimensions, weights, designs and products available without notice. The illustrations cannot be considered binding.