

8146/5051-K0037 Art. No. 212949



- Practical Ex e control boxes made from glass fibre reinforced polyester resin
- Equipped as required with control devices, indicator lamps, illuminated pushbuttons, control switches, ammeters, voltmeters
- Optional: flange, cover hinge, flange enclosure, brass plates, cable glands made from metal

WebCode 8146F



R. STAHL Series 8146 control boxes are available in 8 basic sizes and various enclosure heights; they can be combined to make larger units. They are made from high-quality glass fibre reinforced polyester resin. We equip these with various components according to customer requirements, whereby the following optional accessories are available: Flange, cover hinges or cable glands made from metal.

Technical Data

Explosion Protection

Scope of validity	European Union (ATEX) IECEX
Application range (zones)	1 2 21 22
IECEX gas certificate	IECEX PTB 06.0090
IECEX gas explosion protection	Ex db eb IIC T6 Gb
IECEX dust certificate	IECEX PTB 06.0090
IECEX dust explosion protection	Ex tb IIIC T80 °C Db
ATEX gas certificate	PTB 01 ATEX 1024
ATEX gas explosion protection	⊕ II 2 G Ex db eb IIC T6 Gb
ATEX dust certificate	PTB 01 ATEX 1024
ATEX dust explosion protection	⊕ II 2 D Ex tb IIIC T80 °C Db
Certificates	ATEX (PTB), IECEX (PTB)

Electrical Data

Rated operational current	0.5 A
---------------------------	-------

Ambient Conditions

Ambient temperature	-20 °C ... +40 °C
Ambient temperature	-4°F ... +104°F

Mechanical Data

IP degree of protection (IEC 60529)	IP66
Enclosure material	Polyester resin, Glass fibre reinforced
Enclosure colour	Dark grey
Flammability according to	IEC/EN 60695 UL 94 ASTM D635

8146/5051-K0037 Art. No. 212949

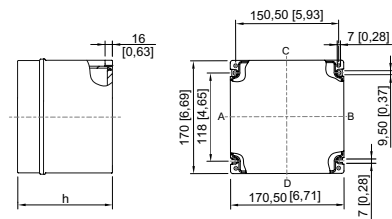
Mechanical Data

Silicone-free	No
Connection cross-section AWG	AWG14
Cover fixing type	With captive screws
Cover thickness	2.8 mm
Cover thickness inch	0.11 in
Wall thickness	2.8 mm
Wall thickness, inches	0.11 in
Width	170 mm
Width in inches	6.692 in
Height	170 mm
Height, inches	6.692 in
Depth	91 mm
Depth, inches	3.583 in
Weight	0 kg
Weight	0 lb

Components

Actuator 1	1 x Key-operated switch
Actuator 2	2 x Small handle
Actuator 3	1 x EM-STOP mushroom stay-put but.
Built-in unit 1	1 x Contact element NC/NO
Built-in unit 2	2 x Contact element NO/NO
Built-in unit 3	1 x Contact element NC/NC
Flange and plates	Without flange
Entry 1	1 x Black cable gland M32 Ø 13 ... 21 mm
Type of terminals PE 1	1 x Phoenix USLKG 2-conductor, 4 mm ² , green-yellow

Dimensional Drawings (All Dimensions in mm [inches]) – Subject to Alterations



8146/.05.
8146/.051: h = 91 mm
8146/.052: h = 131 mm

We reserve the right to make alterations to the technical data, dimensions, weights, designs and products available without notice. The illustrations cannot be considered binding.