

# Control and signalling devices

## Control devices for panel mounting

Ex e

8003/111-010S UL Art. No. 217915



- Flexible configuration thanks to pushbutton, mushroom push-button, mushroom stay-put button, mushroom stay-put button with key lock, key-operated button and key-operated switch
- Easy to install using a single hole
- Codable "latching", "spring return" and "key not removable" functions
- Spring clamp terminals with connection chamber

### MY R. STAHL 8003A



R. STAHL Series 8003 switches and control buttons for panel mounting take on various switching functions in latching and spring return positions up to 6 A, which can be subsequently recoded. They are fully certified, explosion-protected equipment with an Ex e connection chamber. With the patented mounting mechanism, panel mounting with drilled holes or openings of 30.5 mm is quick and easy.

Compatible actuators are available for a comprehensive range of applications.

## Technical Data

### Explosion Protection

|                                 |   |
|---------------------------------|---|
| Area of application             | European Union (ATEX)<br>CE Code<br>IECEX<br>NEC®                                       |
| Application range (zones)       | 1, 2, 21, 22  |
| IECEX gas certificate           | IECEX PTB 06.0065X  |
| IECEX gas explosion protection  | Ex db eb IIC T6 Gb  |
| IECEX dust certificate          | IECEX PTB 06.0065X  |
| IECEX dust explosion protection | Ex tb IIIC T80 °C Db  |
| ATEX gas certificate            | PTB 02 ATEX 1057 X  |
| ATEX gas explosion protection   | ⊕ II 2 G Ex db eb IIC T6 Gb   |
| ATEX dust certificate           | PTB 02 ATEX 1057 X  |
| ATEX dust explosion protection  | ⊕ II 2 D Ex tb IIIC T80 °C Db   |
| Certificates                    | ATEX (PTB), Canada (UL), China (CQST), IECEX (PTB), Korea (KGS), USA (UL)               |
| Declaration of conformity       | ATEX (EUK), ATEX (Simple apparatus), China (CCC), Declaration of Conformity (ATEX)      |
| Notes                           | Product label may vary. Series devices are labelled with ATEX, IECEX, NEC® and CE Code. |

### Electrical Data

|   |                            |
|---|----------------------------|
| Rated operational voltage AC                                      | 500 V                      |
| Rated operational current   | 6 A                        |
| Switching capacity AC-12  | 500 V / 6 A / max. 3000 VA |
| Switching capacity AC-15  | 400 V / 6 A / max. 1250 VA |
| Switching capacity DC-13  | 110 V / 1 A / max. 110 W   |
| Switching capacity DC-13<SoftReturn/>2 contact elements in series | 60 V/6 A                   |

# Control and signalling devices

## Control devices for panel mounting

Ex e

8003/111-010S UL Art. No. 217915

STAHL

### Ambient Conditions

|                          |                    |
|--------------------------|--------------------|
| Ambient temperature      | -55 °C ... 60 °C   |
| Ambient temperature      | -67 °F ... +140 °F |
| Ambient temperature NEC® | -55 °C ... +60 °C  |
| Ambient temperature NEC® | -67 °F ... +140 °F |

### Mechanical Data

|                                       |                                    |
|---------------------------------------|------------------------------------|
| Degree of protection (IP) (IEC 60529) | Reverse side IP65, front side IP66 |
| Enclosure material                    | Polyamide                          |
| Contact material                      | Silver-nickel                      |
| Silicone-free                         | No                                 |
| Number of NCs                         | 1                                  |
| Number of NOs                         | 1                                  |
| Connection cross-section              | 0.75 ... 1.5 mm <sup>2</sup>       |
| Connection cross-section AWG          | 18 AWG ... 12 AWG                  |
| Depth of cut-out                      | 130 mm                             |
| Mounting depth in inches              | 5.12 in                            |
| Service life, min.                    | 10 <sup>5</sup> operating cycles   |
| Weight                                | 125 g                              |
| Weight                                | 0.28 lb                            |

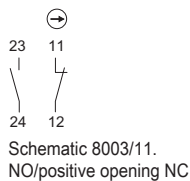
### Mounting / Installation

|                          |              |
|--------------------------|--------------|
| Tightening torque        | 3 N · m      |
| Tightening torque lbf in | 26.55 lbf in |

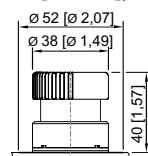
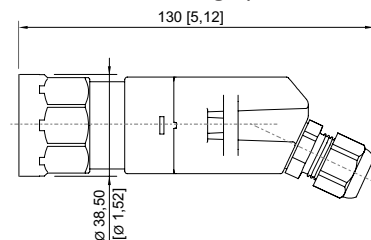
### Components

|              |                                  |
|--------------|----------------------------------|
| Actuator     | Mushroom stay-put button EM-STOP |
| Entry 1      | 8161/7-M16-0902                  |
| Entry 1 type | Polyamide cable gland, black     |

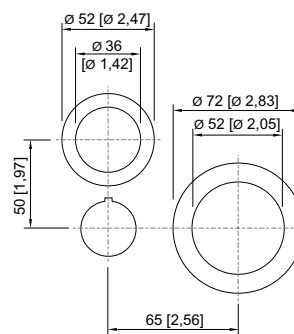
### Technical Drawings – Subject to Alterations



### Dimensional Drawings (All Dimensions in mm [inches]) – Subject to Alterations



8003/...-010, 8003/...-012 mushroom stay-put button  
dia. 38 mm



8003/...-009, 8003/...-010, 8003/...-015  
cut-out for EMERGENCY STOP button

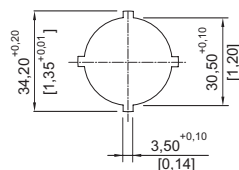
# Control and signalling devices

## Control devices for panel mounting

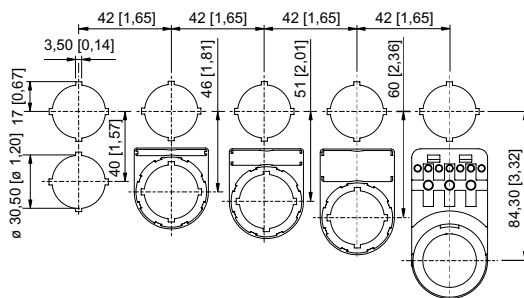


Ex e

8003/111-010S UL Art. No. 217915



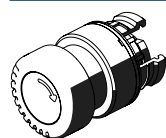
Punch pattern



Cut-out with/without additional designation plate

## Accessories

### Actuators



Mushroom stay-put button EM-STOP

Art. No.

261756

### Closing part



8602C3-733-B  
for closing unused holes in cover, dia. 30.5 mm, NBR

8602C3-733-S  
for closing unused holes in cover, dia. 30.5 mm, silicone

Art. No.

244306

244307

## Spare Parts

### Label holder



Label holder, size 1, without insert disc  
Labelling: 1-line  
can be installed in dia. 30.5 mm drilled holes for actuators

Art. No.

155632



Label holder, size 2, without insert disc  
Labelling: 1- or 2-line  
can be installed in dia. 30.5 mm drilled holes for actuators

Art. No.

155687



Label holder, size 3, without insert disc  
Labelling: 1-, 2- or 3-line  
can be installed in dia. 30.5 mm drilled holes for actuators

Art. No.

155844

### Label, yellow, general



for Ø 39 actuator (EM-STOP)

Art. No.

223571






# Control and signalling devices

## Control devices for panel mounting



Ex e

8003/111-010S UL Art. No. 217915

| Protective collar  |  | Art. No. |
|--|--|----------|
|    | 8602A0751 metal<br>for pushbutton/selector switch/mushroom stay-put button with key lock/mushroom stay-put button/mushroom pushbutton dia. 39<br>BG001, BG003, BG005, BG008, BG009, BG010, BG012 | 155326   |
| Designation plates for pushbuttons and selector switches                           |  | Art. No. |
|    | Colour: Red<br>Symbol: Arrow   | 155567   |
| Insert discs for label holder  |  | Art. No. |
|    | One-line<br>Plain<br>Material: PVC<br>Colour: White<br>Self-adhesive   | 238271   |
|   | Two-line<br>Plain<br>Material: PVC<br>Colour: White<br>Self-adhesive   | 238272   |
|  | Three-line<br>Plain<br>Material: PVC<br>Colour: White<br>Self-adhesive   | 238273   |

We reserve the right to make alterations to the technical data, dimensions, weights, designs and products available without notice. The illustrations cannot be considered binding.