

Lighting

Linear luminaire For fluorescent lamps

GRP

6001/562-9010-15-131 Art. No. 221734



- Can be used in Zone 1, 2, 21 and 22
- Extremely robust: Impact strength rating of IK10

MY R. STAHL 6001A



The 6001 EXLUX luminaire is suited to normal lighting applications in almost any facility. In no time at all and with very little effort, using the accessories it can be fitted to the wall, ceiling or a pole, or alternatively, it can be suspended. The practical central lock has a safety switch that disconnects the power supply at all poles when the plastic enclosure is opened. Lightweight yet strong: The high-quality workmanship makes this luminaire robust and minimises maintenance requirements.

Technical Data

Explosion Protection

| | |
|---------------------------------|-------------------------------|
| Ex version | Yes |
| Application range (zones) | 1 2 21 22 |
| IECEX gas certificate | IECEX PTB 13.0003 |
| IECEX gas explosion protection | Ex db eb IIC T4 Gb |
| IECEX dust certificate | IECEX PTB 13.0003 |
| IECEX dust explosion protection | Ex tb IIIC T80 °C Db |
| ATEX gas certificate | PTB 13 ATEX 2004 |
| ATEX gas explosion protection | ⊕ II 2 G Ex db eb IIC T4 Gb |
| ATEX dust certificate | PTB 13 ATEX 2004 |
| ATEX dust explosion protection | ⊕ II 2 D Ex tb IIIC T80 °C Db |
| Certificates and approvals | ATEX IECEX |
| Certificates | ATEX (PTB), IECEX (PTB) |
| Ship approval | DNV |

Electrical Data

| | |
|------------------------------|---------------|
| Rated operational voltage AC | 220 – 240 V |
| Rated operational voltage DC | 220 ... 240 V |
| Frequency range | 50 – 60 Hz |

Lighting Data

| | |
|--------------------|---------------|
| Number of lamps | 2 |
| Lamp wattage | 58 W |
| Lamp | G13 lamp base |
| Luminaire efficacy | 0 lm/W |
| Luminous flux | 0 lm |

Lighting

Linear luminaire For fluorescent lamps

GRP

6001/562-9010-15-131 Art. No. 221734



Ambient Conditions

Ambient temperature -20 °C ... +55 °C

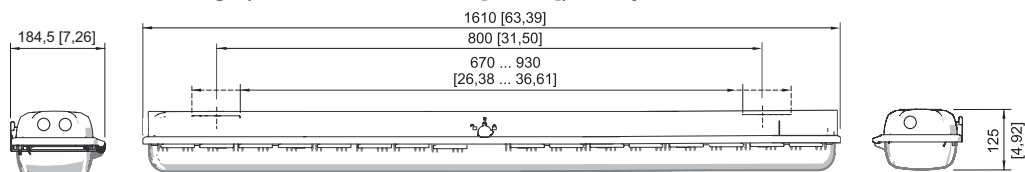
Mechanical Data

| | |
|---|--|
| Version | Standard |
| IP degree of protection (IEC 60598) | IP66 |
| Class | I (with inner PE connection) |
| Enclosure material | Polyester resin, Glass fibre reinforced |
| Enclosure colour | Light grey (RAL 7035) |
| Sealing material | Silicone |
| Silicone-free content | Contains silicone |
| Translucent cover material | Polycarbonate |
| Installed terminal strip | PE + N + L1 + L2 + L3 |
| Max. solid connection terminals | 6 mm ² |
| Max. finely stranded connection terminals | 4 mm ² |
| Lighting lock | Central lock , For box spanner actuation |
| Type of connection cable | Finely stranded Solid |
| Size | 6 |
| Width | 184 mm |
| Height | 125 mm |
| Length | 1610 mm |
| Impact strength (IEC 62262) | IK10 |
| Weight | 8.3 kg |
| Weight | 18.3 lb |
| Disconnection of the luminaire | Yes |

Components

| | |
|--------------------------|------------------|
| Threaded plate | 2x plastic |
| Ballast | 6042/963-21 |
| Through wiring | without |
| Drilled holes | 3 x M25 |
| Cable glands and entries | 2 x M25 Ø 7 ... |
| Material cable gland | Polyamide, black |
| Stopping plugs | 2 x M25 x 1.5 |
| Stopping plug material | Polyamide, black |
| Accessories | Provided |

Dimensional Drawings (All Dimensions in mm [inches]) – Subject to Alterations



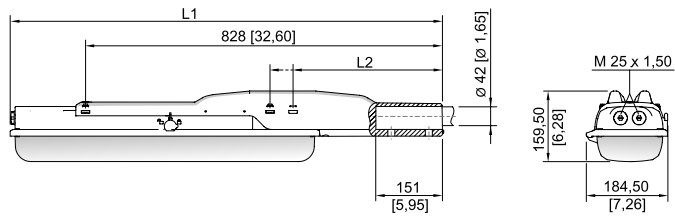
Size 6

Lighting

Linear luminaire For fluorescent lamps

GRP

6001/562-9010-15-131 Art. No. 221734



With pole mounting sleeve

Size 2:

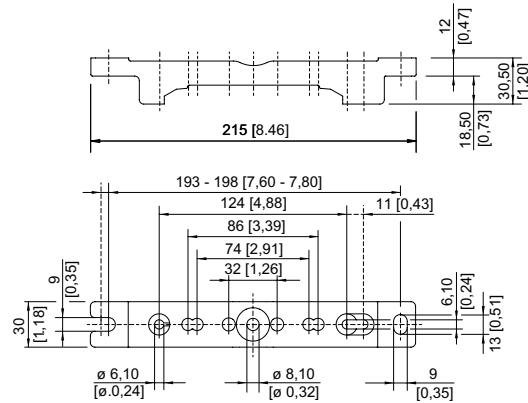
L1 = 978 mm [38.50]

L2 = 390 mm [15.35]

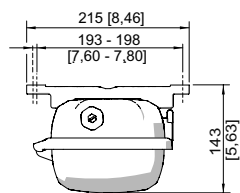
Size 4:

L1 = 1587 mm [62.48]

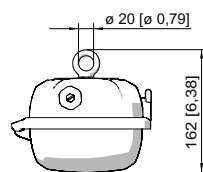
L2 = 338 mm [13.31]



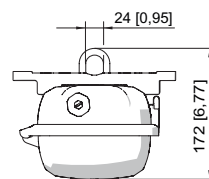
Mounting rail



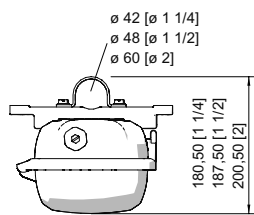
Mounting rail



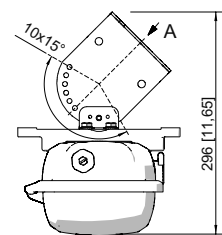
Ring bolt fitted in insert nut of the luminaire



Mounting bracket fitted in mounting rail



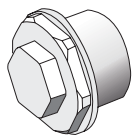
Pipe clamp fitted in mounting rail



Wall mounting bracket fitted in mounting rail

Accessories

Breather

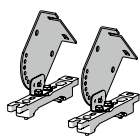


Thread: M25 x 1.5 (1 piece); for installation in light fittings; made from stainless steel; without jam nut

Art. No.

296608

Ceiling and wall mounting bracket



mounted on a mounting rail for a variable mounting distance; Material: stainless steel; Lamp can be swiveled in steps of 15°; 1 pair

Art. No.

222827

Lighting

Linear luminaire For fluorescent lamps

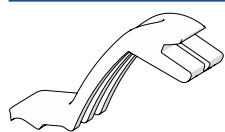
GRP

6001/562-9010-15-131 Art. No. 221734

STAHL

Holder for translucent cover

Art. No.

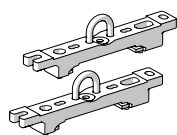


The fall prevention system for the light fitting cover prevents the light fitting cover from falling accidentally when the light fitting is opened.

226791

Mounting bracket

Art. No.

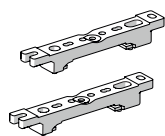


mounting clamp mounted on a mounting rail for a variable mounting distance; 1 pair

222456

Mounting rail

Art. No.

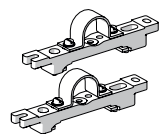


for a variable mounting distance; 1 pair

222826

Pipe clamp

Art. No.



R 1 1/2"; with mounting rail for a variable mounting distance; material: stainless steel; 1 pair

222459

R 1 1/4"; with mounting rail for a variable mounting distance; Material: stainless steel; 1 pair

222458

R 2"; with mounting rail for a variable mounting distance; Material: stainless steel; 1 pair

222460

Pole mounting sleeve

Art. No.

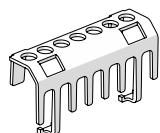


for the subsequent mounting on lights size 2 and size 4, completely with assembly parts (for pipe diameter 42 mm)

227512

Protection against accidental contact

Art. No.



The protection against accidental contact prevents maintenance technicians and electrical installers from accidentally touching conductive parts. The degree of protection is increased to IP20 when the protection against accidental contact is used.

283153

Ring bolt

Art. No.

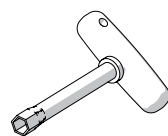


M8, direct mounting in insert nuts; 1 pair

115736

Socket key

Art. No.



M8 / A/F 13;
For actuating the central lock

222430

Spare Parts

Contact element

Art. No.

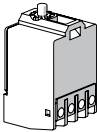
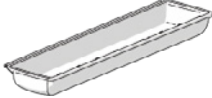
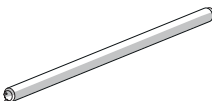
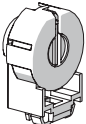
Lighting

Linear luminaire For fluorescent lamps

GRP

6001/562-9010-15-131 Art. No. 221734



| | | |
|--|---|-----------------|
|  | 8080/1-3-L 2 NC contact element | 132527 |
| Cover | | Art. No. |
|  | for luminaire size 6 | 222429 |
| Fluorescent lamp | | Art. No. |
|  | 58 W, 5200 lm | 108950 |
| Lamp holder | | Art. No. |
|  | G13 Ex e lamp holder for light fittings with T8 fluorescent lamps for use in Zone 1 | 117252 |

We reserve the right to make alterations to the technical data, dimensions, weights, designs and products available without notice. The illustrations cannot be considered binding.