

8118/112-047-0 Art. No. 224642



- Compact, impact-resistant enclosure, also available in versions with integrated metal bracket for optimised installation of cable glands
- Customer-specific equipping with terminals, cable glands and miniature fuses
- IP66 degree of protection

MY R. STAHL 8118B



R. STAHL Series 8118 terminal boxes are equipped, in accordance with customer specifications, with various series terminals and cable glands made from plastic or metal, if required also with miniature fuses. They are available in 3 design sizes and are made from glass fibre reinforced polyester resin.

Technical Data

Explosion Protection

| | |
|---------------------------------|---|
| Scope of validity | European Union (ATEX) IECEX |
| Application range (zones) | 1 2 21 22 |
| IECEX gas certificate | IECEX PTB 06.0026 |
| IECEX gas explosion protection | Ex eb IIC T6 / T5 Gb |
| IECEX dust certificate | IECEX PTB 06.0026 |
| IECEX dust explosion protection | Ex tb IIIC T80 °C / T95 °C Db |
| ATEX gas certificate | PTB 99 ATEX 3103 |
| ATEX gas explosion protection | ⊕ II 2 G Ex eb IIC T6 / T5 Gb |
| ATEX dust certificate | PTB 99 ATEX 3103 |
| ATEX dust explosion protection | ⊕ II 2 D Ex tb IIIC T80 °C / T95 °C Db |
| Certificates | ATEX (PTB), Brazil (ULB), China (NEPSI), IECEX (PTB), India (PESO), Korea (KTL) |
| Declaration of Conformity | ATEX (EUK), China (CCC) |
| Explosion protection note | For product label, see scope of validity. |

Electrical Data

| | |
|---|---|
| Rated operational voltage AC | 690 V |
| Max. number of conductors for conductor cross-section 1.5 mm ² | At 3 A: 16 ^{*)} At 6 A: 16 ^{*)} At 10 A: 16 ^{*)} At 16 A: 6 ^{*)} |
| Max. number of conductors for conductor cross-section 2.5 mm ² | At 3 A: Any At 6 A: 12 ^{*)} At 10 A: 12 ^{*)} At 16 A: 12 ^{*)} At 20 A: 6 ^{*)} |

8118/112-047-0 Art. No. 224642

Electrical Data

| | |
|---|---|
| Max. number of conductors for conductor cross-section 4 mm ² | At 3 A: Any At 6 A: Any At 10 A: 12 ^{*)} At 16 A: 12 ^{*)} At 20 A: 12 ^{*)} At 25 A: 8 ^{*)} |
| Max. number of conductors note | Each inserted conductor and each internal connection conductor counts as a conductor. Jumpers and protective conductors do not count. ^{*)} When using these values, simultaneity factors or load factors must be taken into account according to IEC 61439. A mixed assembly with electrical circuits of different cross sections and currents is possible with proportional utilisation of the different tables of values. |

Ambient Conditions

| | |
|---------------------|--|
| Ambient temperature | -40 °C ... +40 °C (T6) -40 °C ... +55 °C (T5) |
| Ambient temperature | -40°F ... +104°F (T6) -40°F ... +131°F (T5) |

Mechanical Data

| | |
|-------------------------------------|--|
| Degree of protection IP (IEC 60529) | IP66 |
| Enclosure material | Polyester resin, Glass fibre reinforced |
| Enclosure colour | Dark grey |
| Flammability according to | IEC/EN 60695 UL 94 ASTM D635 |
| Silicone-free | No |
| Cover | Screw-on cover |
| Cover fixing type | M4 stainless steel screws, With captive screws |
| Width | 85 mm |
| Width, inches | 3.35 in |
| Height | 85 mm |
| Height, inches | 3.35 in |
| Depth | 55 mm |
| Depth, inches | 2.17 in |
| Packaging unit | 1 |
| Weight | 360 g |
| Weight | 0.79 lb |

Mounting / Installation

| | |
|---|-------------|
| Tightening torque of cover screw 1 | 1.4 Nm |
| Tightening torque of cover screw 1 lbf in | 12.4 lbf in |

Components

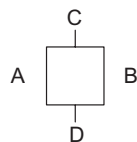
| | |
|------------------------------|--|
| Entry 1 | 2 x 8161/7-M20-1304 (Provided separately) |
| Entry 1 type | Polyamide cable gland, black |
| Entry 1 | M20 x 1.5 |
| Entry 1 terminal area | 4 – 13 mm |
| Entry 1 clamping range, inch | 0.16 – 0.51 in |
| Metal entry possible 1 | No |

8118/112-047-0 Art. No. 224642

Components

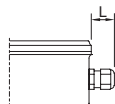
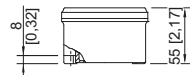
| | |
|-----------------------------------|---|
| Entry 2 | 1 x 8290/3-M20 (Provided separately) |
| Entry 2 type | Polyamide stopping plug |
| Entry 2 | M20 x 1.5 |
| Metal entry possible 2 | No |
| Entries installation options/side | Size 1: 2x M20 (C+D) |
| Terminal rail | 15 x 70 mm (1x) |
| Terminal rail | 0,59 x 2,76 " (1x) |
| Type of terminals 1 | 3 x WAGO 264-220 4-conductor, 2.5 mm ² , grey |
| Type of terminals PE 1 | 1 x WAGO 264-727/999-950 4-conductor, 2.5 mm ² , green-yellow |
| | For connection cross-sections, see the manufacturer's data sheet |

Technical Drawings – Subject to Alterations

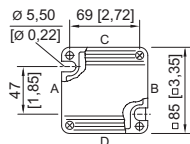


"—" = marking for mounting options

Dimensional Drawings (All Dimensions in mm [inches]) – Subject to Alterations



Length L
 Projection dimension for cable gland of Series 8161:
 For M20: 25 to 31 [0.98 to 1.22]
 For M25: 27 to 33 [1.06 to 1.3]
 For M32: 32 to 39 [1.26 to 1.54]
 Projection dimension for cable gland with strain relief
 of Series HSK-K-MZ
 For M25: 41 [1.61]



8118/1.
Enclosure SZ 1

Accessories

Cable gland made of plastic



8161/7-M20-1304, Ex e
 Plastic, M20 x 1.5, cable outer diameter 4 to 13 mm
 Lot size 50 pieces

Art. No.

239156

Stopping plug



8290/3-M20
 Plastic, M20 x 1.5
 Lot size 100 pieces



Art. No.

285773

8118/112-047-0 Art. No. 224642

Brass plate with thread

Art. No.

| | | |
|--|--|--------|
|  | 8118 SZ 1, plate 37 x 30 mm [1.46 x 1.18 inch] 1 x M20 x 1.5 with M4 PE connection (left) Can be installed in enclosures of SZ 1, SZ 2 and SZ 3 | 168913 |
|  | 8118 SZ 1, plate 37 x 30 mm [1.46 x 1.18 inch] 1 x M20 x 1.5 with M4 PE connection (right) Can be installed in enclosures of SZ 1, SZ 2 and SZ 3 | 168914 |

We reserve the right to make alterations to the technical data, dimensions, weights, designs and products available without notice. The illustrations cannot be considered binding.