

Lighting

Linear luminaire For fluorescent lamps

GRP

6001/542-9510-15-232 Art. No. 238145



- Can be used in Zone 1, 2, 21 and 22
- Extremely robust: Impact strength rating of IK10

MY R. STAHL 6001A



The 6001 EXLUX luminaire is suited to normal lighting applications in almost any facility. In no time at all and with very little effort, using the accessories it can be fitted to the wall, ceiling or a pole, or alternatively, it can be suspended. The practical central lock has a safety switch that disconnects the power supply at all poles when the plastic enclosure is opened. Lightweight yet strong: The high-quality workmanship makes this luminaire robust and minimises maintenance requirements.

Technical Data

Explosion Protection

Ex version	Yes
Application range (zones)	1 2 21 22
IECEX gas certificate	IECEX PTB 13.0003
IECEX gas explosion protection	Ex db eb IIC T4 Gb
IECEX dust certificate	IECEX PTB 13.0003
IECEX dust explosion protection	Ex tb IIIC T80 °C Db
ATEX gas certificate	PTB 13 ATEX 2004
ATEX gas explosion protection	Ex II 2 G Ex db eb IIC T4 Gb
ATEX dust certificate	PTB 13 ATEX 2004
ATEX dust explosion protection	Ex II 2 D Ex tb IIIC T80 °C Db
Certificates and approvals	ATEX IECEX
Certificates	ATEX (PTB), IECEX (PTB)
Ship approval	DNV

Electrical Data

Rated operational voltage AC	220 – 240 V
Rated operational voltage DC	220 ... 240 V
Frequency range	50 – 60 Hz

Lighting Data

Number of lamps	2
Lamp wattage	36 W
Lamp	G13 lamp base
Luminaire efficacy	0 lm/W
Luminous flux	0 lm

Lighting

Linear luminaire For fluorescent lamps

GRP

6001/542-9510-15-232 Art. No. 238145



Ambient Conditions

Ambient temperature	-30 °C ... +50 °C Note: Through wiring Max. 3x16 A -30 °C ... +55 °C Note: Through wiring 2 Max. 3x10 A
---------------------	--

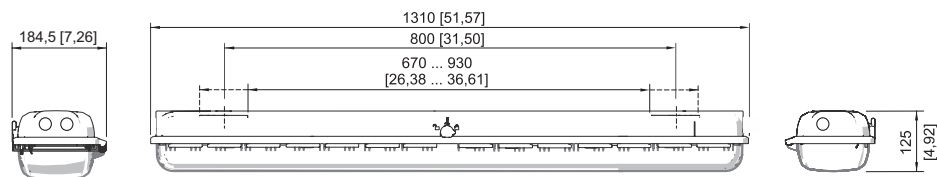
Mechanical Data

Version	Standard
IP degree of protection (IEC 60598)	IP66/IP67
Class	I (with inner PE connection)
Enclosure material	Polyester resin, Glass fibre reinforced
Enclosure colour	Light grey (RAL 7035)
Sealing material	Silicone
Silicone-free content	Contains silicone
Translucent cover material	Polycarbonate
Installed terminal strip	PE + N + L1 + L2 + L3
Max. solid connection terminals	6 mm ²
Max. finely stranded connection terminals	4 mm ²
Lighting lock	Central lock , For box spanner actuation
Type of connection cable	Finely stranded Solid
Size	4
Width	184 mm
Height	125 mm
Length	1310 mm
Impact strength (IEC 62262)	IK10
Weight	6.8 kg
Weight	14.99 lb
Disconnection of the luminaire	Yes

Components

Threaded plate	2x SS430 stainless steel
Ballast	6042/243-21
Through wiring	With 5 conductors 2.5 mm ²
Drilled holes	3 x M20
Cable glands and entries	Can be ordered as accessories
Stopping plugs	Can be ordered as accessories
Accessories	without

Dimensional Drawings (All Dimensions in mm [inches]) – Subject to Alterations



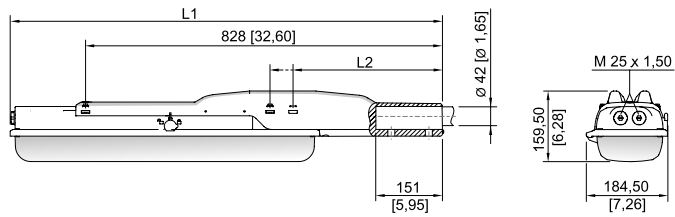
Size 4

Lighting

Linear luminaire For fluorescent lamps

GRP

6001/542-9510-15-232 Art. No. 238145



With pole mounting sleeve

Size 2:

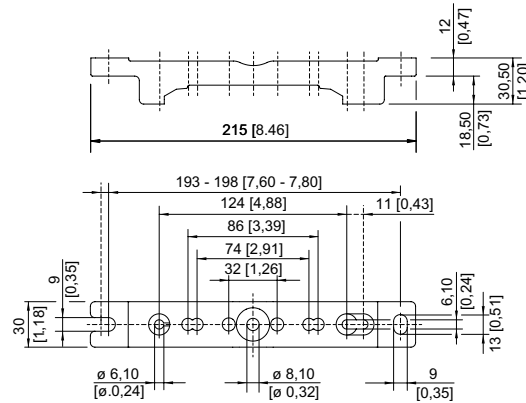
L1 = 978 mm [38.50]

L2 = 390 mm [15.35]

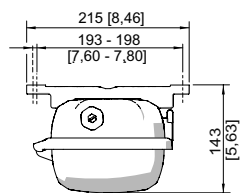
Size 4:

L1 = 1587 mm [62.48]

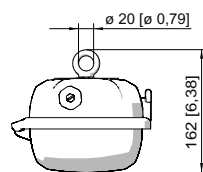
L2 = 338 mm [13.31]



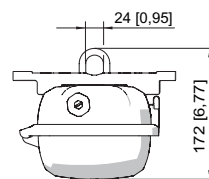
Mounting rail



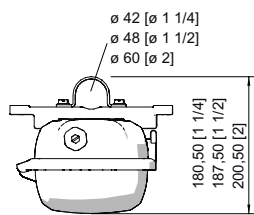
Mounting rail



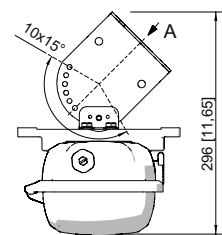
Ring bolt fitted in insert nut of the luminaire



Mounting bracket fitted in mounting rail



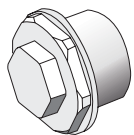
Pipe clamp fitted in mounting rail



Wall mounting bracket fitted in mounting rail

Accessories

Breather

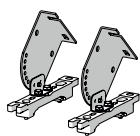


Thread: M25 x 1.5 (1 piece); for installation in light fittings; made from stainless steel; without jam nut

Art. No.

296608

Ceiling and wall mounting bracket



mounted on a mounting rail for a variable mounting distance; Material: stainless steel; Lamp can be swiveled in steps of 15°; 1 pair

Art. No.

222827

Lighting

Linear luminaire For fluorescent lamps

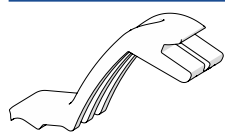
GRP

6001/542-9510-15-232 Art. No. 238145

STAHL

Holder for translucent cover

Art. No.

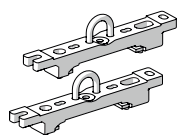


The fall prevention system for the light fitting cover prevents the light fitting cover from falling accidentally when the light fitting is opened.

226791

Mounting bracket

Art. No.

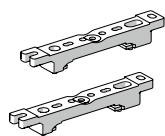


mounting clamp mounted on a mounting rail for a variable mounting distance; 1 pair

222456

Mounting rail

Art. No.

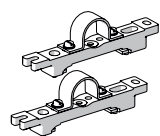


for a variable mounting distance; 1 pair

222826

Pipe clamp

Art. No.



R 1 1/2"; with mounting rail for a variable mounting distance; material: stainless steel; 1 pair

222459

R 1 1/4"; with mounting rail for a variable mounting distance; Material: stainless steel; 1 pair

222458

R 2"; with mounting rail for a variable mounting distance; Material: stainless steel; 1 pair

222460

Pole mounting sleeve

Art. No.

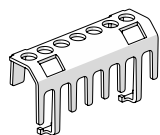


for the subsequent mounting on lights size 2 and size 4, completely with assembly parts (for pipe diameter 42 mm)

227512

Protection against accidental contact

Art. No.



The protection against accidental contact prevents maintenance technicians and electrical installers from accidentally touching conductive parts. The degree of protection is increased to IP20 when the protection against accidental contact is used.

283153

Ring bolt

Art. No.

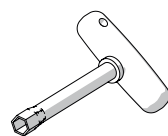


M8, direct mounting in insert nuts; 1 pair

115736

Socket key

Art. No.



M8 / A/F 13;
For actuating the central lock

222430

Spare Parts

Contact element

Art. No.

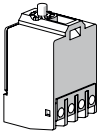
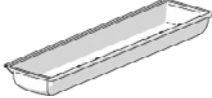
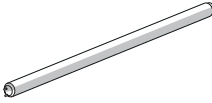
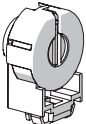
Lighting

Linear luminaire For fluorescent lamps

GRP

6001/542-9510-15-232 Art. No. 238145



	8080/1-3-L 2 NC contact element	132527
Cover		Art. No.
	for luminaire size 4	222428
Fluorescent lamp		Art. No.
	36 W, 3350 lm	108951
Lamp holder		Art. No.
	G13 Ex e lamp holder for light fittings with T8 fluorescent lamps for use in Zone 1	117252

We reserve the right to make alterations to the technical data, dimensions, weights, designs and products available without notice. The illustrations cannot be considered binding.