

8537/7-712-7000 Art. No. 306705



- Motor switching capacity AC-3 and AC-23 acc. to IEC 60947-3, EN 60947, DIN VDE 0660 Part 107
- With or without load-shedding contact
- Positive opening operation of the main contacts
- Isolating characteristics acc. to DIN VDE 0660
- Padlockable in "OFF" position with padlocks
- Rotary actuator with clear switching position
- High level of corrosion resistance in external components
- Marked with signal orange label "Safety Switch"

MY R. STAHL 8537A



Safety switches ensure the obligatory disconnection of the machines and installations from the energy supply during cleaning and repair work. Usual preparatory work such as removal of fuses or disconnection of motors, which can be performed only by electrically skilled persons, is no longer required.

Technical Data

Explosion Protection

Scope of validity	European Union (ATEX) IECEx
Application range (zones)	1 2 21 22
IECEx gas certificate	IECEx PTB 06.0069
IECEx gas explosion protection	Ex db eb IIC T5 Gb
IECEx dust certificate	IECEx PTB 06.0069
IECEx dust explosion protection	Ex tb IIIC T95 °C Db
ATEX gas certificate	PTB 02 ATEX 1109
ATEX gas explosion protection	⊕ II 2 G Ex db eb IIC T5 Gb
ATEX dust certificate	PTB 02 ATEX 1109
ATEX dust explosion protection	⊕ II 2 D Ex tb IIIC T95 °C Db
Certificates	ATEX (PTB), China (CQST), IECEx (PTB)

Electrical Data

Rated operational voltage AC	690 V / 500 V
Rated operational current	250 A
Switching capacity AC-3	U _e 230 V ~ = 75 kW U _e 400 V ~ = 132 kW U _e 500 V ~ = 160 kW U _e 690 V ~ = 160 kW
Switching capacity AC-23	U _e 230 V ~ = 75 kW U _e 400 V ~ = 132 kW U _e 500 V ~ = 160 kW U _e 690 V ~ = 200 kW
Switching capacity note	according to IEC/EN 60947-3; DIN VDE 0660, Part 107
Auxiliary contact NC	without
Auxiliary contact NO	1 NO/delayed

Load Disconnect Switches and Motor Starters

Safety switch



8537/7-712-7000 Art. No. 306705

Electrical Data

Back-up fuse	250 A gL
Frequency range	50 – 60 Hz

Ambient Conditions

Ambient temperature	-20 °C ... +40 °C
Ambient temperature	-4 °F ... +104 °F

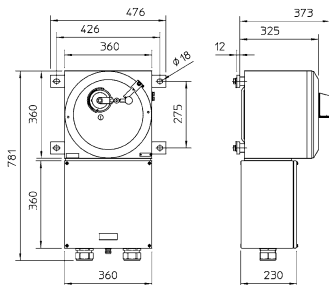
Mechanical Data

Degree of protection (IP)	IP65
Degree of protection note	IP65 with seal (accessory)
Enclosure material	Sheet steel, painted
Handle colour	Black shroud and handle
Seal	Silicone, foamed
Lockable in	Three times in 0 position
Detailed number of poles	3-pole
Weight	55 kg
Weight	121.25 lb

Components

Entry type	EMSKE-L
Cable gland	2 x M63 Ø 28 to 48 mm 1 x M20 Ø 4 to 13 mm

Dimensional Drawings (All Dimensions in mm [inches]) – Subject to Alterations



We reserve the right to make alterations to the technical data, dimensions, weights, designs and products available without notice. The illustrations cannot be considered binding.