

8537/7-712-7000 Art. No. 306705



- Motor switching capacity AC-3 and AC-23 acc. to IEC 60947-3, EN 60947, DIN VDE 0660 part 107
- With or without load-shedding contact
- Positive opening operation of the main contacts
- Isolating characteristics acc. to DIN VDE 0660
- Can be locked in the "OFF" position with padlocks
- Rotary actuator with clear switch position
- Highly corrosion-resistant external components
- Identified by a signal orange label "Safety switch"

MY R. STAHL 8537A



Safety switches ensure that machines and system parts are disconnected from the energy supply during cleaning and repair work as a mandatory requirement. Usual preparatory work such as removal of fuses or disconnection of motors, which can be performed only by electrically skilled persons, is no longer required.

### Technical Data

#### Explosion Protection

Area of application	European Union (ATEX) IECEX
Application range (zones)	1, 2, 21, 22
IECEX gas certificate	IECEX PTB 06.0069
IECEX gas explosion protection	Ex db eb IIC T5 Gb
IECEX dust certificate	IECEX PTB 06.0069
IECEX dust explosion protection	Ex tb IIIC T95 °C Db
ATEX gas certificate	PTB 02 ATEX 1109
ATEX gas explosion protection	⊕ II 2 G Ex db eb IIC T5 Gb
ATEX dust certificate	PTB 02 ATEX 1109
ATEX dust explosion protection	⊕ II 2 D Ex tb IIIC T95 °C Db
Certificates	ATEX (PTB), China (CQST), IECEX (PTB)

#### Electrical Data

Rated operational voltage AC	690 V / 500 V
Rated operational current	250 A
Switching capacity AC-3	U <sub>e</sub> 230 V ~ = 75 kW U <sub>e</sub> 400 V ~ = 132 kW U <sub>e</sub> 500 V ~ = 160 kW U <sub>e</sub> 690 V ~ = 160 kW
Switching capacity AC-23	U <sub>e</sub> 230 V ~ = 75 kW U <sub>e</sub> 400 V ~ = 132 kW U <sub>e</sub> 500 V ~ = 160 kW U <sub>e</sub> 690 V ~ = 200 kW
Switching capacity note	acc. to IEC/EN 60947-3; DIN VDE 0660, part 107
Auxiliary contact NC	without
Auxiliary contact NO	1 NO/delayed
Back-up fuse	250 A gL
Frequency range	50 – 60 Hz

# Load disconnect switches and motor starters

## Safety switch



8537/7-712-7000 Art. No. 306705

### Ambient Conditions

Ambient temperature	-20 °C ... +40 °C
Ambient temperature	-4 °F ... +104 °F

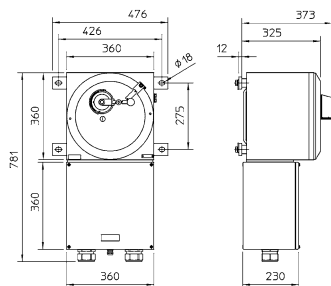
### Mechanical Data

Degree of protection (IP)	IP65
Degree of protection note	IP65 with seal (accessory)
Enclosure material	Sheet steel, painted
Handle colour	Black shroud and handle
Seal	Silicone, foamed
Lockable in	Three times in 0 position
Detailed number of poles	3-pole
Weight	55 kg
Weight	121.25 lb

### Components

Entry type	EMSKE-L
Cable gland	2 x M63 Ø 28 ... 48 mm 1 x M20 Ø 4 ... 13 mm

### Dimensional Drawings (All Dimensions in mm [inches]) – Subject to Alterations



We reserve the right to make alterations to the technical data, dimensions, weights, designs and products available without notice. The illustrations cannot be considered binding.