

8118/131-899-C1918 Art. No. 253859



- Resistant Ex e enclosure, universally usable as connection or junction boxes and/or to safeguard electric distributors up to 6.3 A
- IP66 degree of protection
- With mantle terminals or with a combination of mantle terminals and miniature fuses (optional)

MY R. STAHL 8118A



R. STAHL Series 8118 junction boxes are equipped with 4, 5 or 8 mantle terminals depending on their design size. As an option, miniature fuses can still be installed in addition. Junction boxes are therefore also suitable for safeguarding. The robust enclosure made from glass fibre reinforced polyester resin can be equipped with plastic or metal cable glands.

Technical Data

Explosion Protection

Scope of validity	IECEX European Union (ATEX)
Application range (zones)	1 2 21 22
IECEX gas certificate	IECEX PTB 06.0026
IECEX gas explosion protection	Ex eb IIC T6 / T4 Gb
IECEX dust certificate	IECEX PTB 06.0026
IECEX dust explosion protection	Ex tb IIIC T80 °C / T130 °C Db
ATEX gas certificate	PTB 99 ATEX 3103
ATEX gas explosion protection	⊕ II 2 G Ex eb IIC T6 / T4 Gb
ATEX dust certificate	PTB 99 ATEX 3103
ATEX dust explosion protection	⊕ II 2 D Ex tb IIIC T80 °C / T130 °C Db
Certificates	ATEX (PTB), IECEX (PTB), India (PESO), Korea (KTL)
Explosion protection note	For product label, see scope of validity.

Electrical Data

Rated operational voltage AC	690 V
Rated operational voltage AC	0 ... 690 V
Permissible rated operational current with 7 loaded terminals	For conductor cross-section of 1.5 mm ² : 13 A For conductor cross-section of 2.5 mm ² : 17 A For conductor cross-section of 4 mm ² : 24 A For conductor cross-section of 6 mm ² : 32 A For conductor cross-section of 10 mm ² : 44 A
Permissible rated operational current with 6 loaded terminals	For conductor cross-section of 1.5 mm ² : 14 A For conductor cross-section of 2.5 mm ² : 18 A For conductor cross-section of 4 mm ² : 25 A For conductor cross-section of 6 mm ² : 33 A For conductor cross-section of 10 mm ² : 46 A

8118/131-899-C1918 Art. No. 253859

Electrical Data

Permissible rated operational current with 5 loaded terminals	For conductor cross-section of 1.5 mm ² : 14 A For conductor cross-section of 2.5 mm ² : 20 A For conductor cross-section of 4 mm ² : 25 A For conductor cross-section of 6 mm ² : 35 A For conductor cross-section of 10 mm ² : 49 A
Permissible rated operational current with ≤ 4 loaded terminals	For conductor cross-section of 1.5 mm ² : 16 A For conductor cross-section of 2.5 mm ² : 20 A For conductor cross-section of 4 mm ² : 25 A For conductor cross-section of 6 mm ² : 35 A For conductor cross-section of 10 mm ² : 50 A

Ambient Conditions

Ambient temperature	-60 °C ... +40 °C (T6) -60 °C ... +55 °C (T4)
Ambient temperature	-76 °F ... +104 °F (T6) -76 °F ... +131 °F (T4)

Mechanical Data

Degree of protection IP (IEC 60529)	IP66
Enclosure material	Polyester resin, Glass fibre reinforced
Enclosure colour	Dark grey
Flammability according to	IEC/EN 60695 UL 94 ASTM D635
Silicone-free	No
Permissible number of conductors per clamping unit, solid	Mantle terminal, M10 x 1 Conductor cross-section 1.5 mm ² : Number of conductors min. 2, max. 12 Conductor cross-section 2.5 mm ² : Number of conductors min. 2, max. 7 Conductor cross-section 4 mm ² : Number of conductors min. 2, max. 4 Conductor cross-section 6 mm ² : Number of conductors min. 2, max. 3 Conductor cross-section 10 mm ² : Number of conductors min. 2, max. 2
Permissible number of conductors per clamping unit, finely stranded prepared, core end sleeve crimped	Mantle terminal M10 x 1 Conductor cross-section 1.5 mm ² : Number of conductors min. 2, max. 8 Conductor cross-section 2.5 mm ² : Number of conductors min. 2, max. 5 Conductor cross-section 4 mm ² : Number of conductors min. 2, max. 3 Conductor cross-section 6 mm ² : Number of conductors min. 2, max. 2
Permissible number of conductors per clamping unit, finely stranded unprepared	Mantle terminal, M10 x 1 Conductor cross-section 1.5 mm ² : Number of conductors min. 2, max. 8 Conductor cross-section 2.5 mm ² : Number of conductors min. 2, max. 5 Conductor cross-section 4 mm ² : Number of conductors min. 2, max. 3 Conductor cross-section 6 mm ² : Number of conductors min. 2, max. 2 Conductor cross-section 10 mm ² : Number of conductors min. 2, max. 2
Permissible number of conductors per clamping unit note	All conductors of a terminal must have the same cross section and be made of the same material.
Cover	Screw-on cover
Cover fixing type	M4 stainless steel screws, With captive screws
Width	145 mm
Width, inches	5.71 in
Height	145 mm
Height, inches	5.71 in
Depth	71 mm
Depth, inches	2.8 in

8118/131-899-C1918 Art. No. 253859

Mechanical Data

Packaging unit	1
Weight	900 g
Weight	1.98 lb

Mounting / Installation

Tightening torque of cover screw 1	1.4 Nm
Tightening torque of cover screw 1 lbf in	12.4 lbf in

Components

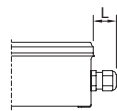
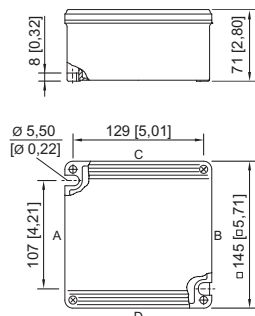
Entry 1	3 x 8161/7-M32-2109-LT
Entry 1 type	Polyamide cable gland, black
Entry 1	M32 x 1.5
Entry 1 terminal area	9 – 21 mm
Entry 1 clamping range, inch	0.35 – 0.83 in
Metal entry possible 1	No
Entry 2	1 x 8161/7-M25-1707-LT
Entry 2 type	Polyamide cable gland, black
Entry 2	M25 x 1.5
Entry 2 terminal area	7 – 17 mm
Entry 2 clamping range, inch	0.28 – 0.67 in
Metal entry possible 2	No
Entries installation options/side	According to order
Type of terminals 1	8 x Mantle terminal 10 mm ²

Technical Drawings – Subject to Alterations



Eight terminals

Dimensional Drawings (All Dimensions in mm [inches]) – Subject to Alterations



Length L
 Projection dimension for cable gland of Series 8161:
 For M20: 25 to 31 [0.98 to 1.22]
 For M25: 27 to 33 [1.06 to 1.3]
 For M32: 32 to 39 [1.26 to 1.54]
 Projection dimension for cable gland with strain relief
 of Series HSK-K-MZ
 For M25: 41 [1.61]

8118/3.
 Enclosure SZ 3

Accessories

Cable gland made of plastic


Art. No.

Installation equipment

Ex e junction box




8118/131-899-C1918 Art. No. 253859

	8161/7-M25-1707, Ex e Plastic, M25 x 1.5, cable outer diameter 7 to 17 mm Lot size 50 pieces	239157
--	--	--------

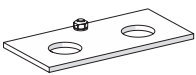
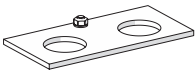
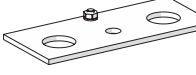
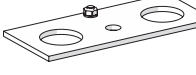
Plastic cable gland

Art. No.

	8161/7-M32-2109, Ex e Plastic, M32 x 1.5, cable outer diameter 9 to 21 mm Lot size 25 pieces	239158
--	--	--------

Brass plate with thread

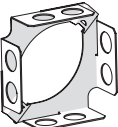
Art. No.

	8118 SZ 4, plate 95 x 46 mm [3.74 x 1.81 inch] 2 x M20 x 1.5 with M4 PE connection (centre) For installation in enclosure SZ 3	168917
	8118 SZ 4, plate 95 x 46 mm [3.74 x 1.81 inch] 2 x M25 x 1.5 with M4 PE connection (centre) For installation in enclosure SZ 3	168918
	8118 SZ 5, plate 107 x 46 mm [4.21 x 1.81 inch] 2 x M20 x 1.5 + 1 x M10 with M4 PE connection For installation in enclosure SZ 3	211344
	8118 SZ 5, plate 107 x 46 mm [4.21 x 1.81 inch] 2 x M25 x 1.5 + 1 x M10 with M4 PE connection (centre) For installation in enclosure SZ 3	211345

Spare Parts

Angle

Art. No.

	Bracket 8118 size 3, for junction boxes, 8 x M25 For installation in enclosure SZ 3	202960
--	--	--------

We reserve the right to make alterations to the technical data, dimensions, weights, designs and products available without notice. The illustrations cannot be considered binding.