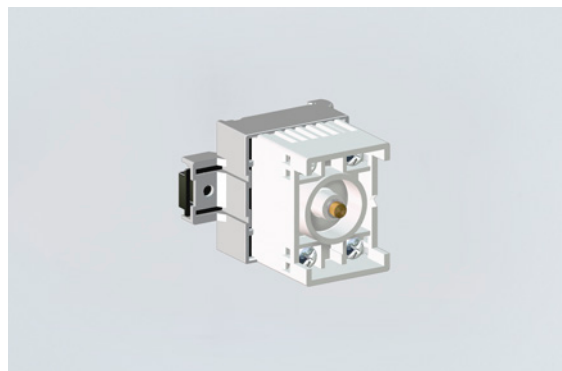


8208/24-15-0024 Art. No. 265691



- Flameproof enclosed snap-action switch
- Versions with and without resistor circuit
- Universally applicable for various control tasks
- Wide operating temperature range
- Four screw terminals with two clamping points each in increased safety (Ex e)
- Large clamping range for solid or stranded wires
- For installation in Ex e enclosures on serrated mounting rail
- International certificates available

MY R. STAHL 8208E



The flameproof enclosed snap-action switch in the universal housing 8208 can be used in a variety of ways for different control tasks in potentially explosive atmospheres. The compact device is designed for installation in enclosures with type of protection increased safety (Ex e). It is mounted on a serrated mounting rail. Four Ex e screw terminals with two clamping points each are available for the electrical connection.

We recommend using the actuating elements of the 8602 series for this purpose.

Technical Data

Explosion Protection

Scope of validity	European Union (ATEX) IECEX
Application range (zones)	1 2
IECEX gas certificate	IECEX PTB 06.0032U
IECEX gas explosion protection	Ex db eb IIC T6 Gb
ATEX gas certificate	PTB 01 ATEX 1066 U
ATEX gas explosion protection	Ⓔ II 2 G Ex db eb IIC T6 Gb
Inmetro gas certificate	ULBR140223U
Certificates	ATEX (PTB), Brazil (ULB), China (CQST), IECEX (PTB), SIL (exida)

Functional Safety

SIL-capable	without actuator or with actuators 8602C3-006, 8602C3-009, 8602C3-010, 8602C3-012
-------------	---

Electrical Data

Rated operational voltage DC	30 V
Max. rated operational voltage	0 V
Rated insulation voltage	250 V
Switching capacity AC-15, 230 V	1,5 A
Mechanical service life	15 ⁶ operating cycles
Rated surge voltage	2.5 kV
Switching capacity DC-13, 60 V	0,5 A
No. of poles	2

Ambient Conditions

Ambient temperature	-40 °C ... +60 °C
Note	see "Max. power" table

8208/24-15-0024 Art. No. 265691

Max. power	Maximum internal heat distribution (Connection to 1.5 mm ² conductor cross-section and maximum 5 A)	
	Ambient temperature	Ambient temperature
	max. 40 °C	max. 60 °C
	T _{surface} = max. 80 °C	T _{surface} = max. 80 °C
	2.0 W	1.0 W

Mechanical Data

Enclosure material	Polyamide
Contact material	Gold-plated
Silicone-free	Yes
Connection cross-section	2.5 mm ²
Max. connection cross-section, finely stranded	2,5 mm ²
Solid connection cross section	1.5 – 2.5 mm ²
Finely stranded connection cross section	1.5 – 2.5 mm ²
Connection cross-section, finely stranded with core end sleeve	1.5 – 2.5 mm ²
Number of NCs	1
Positive opening operation	Yes
Number of NOs	1
Type of connection cable	Solid Finely stranded
Contacts	1 NO + 1 NC 13k7/1k
Packaging unit	1
Weight	100 g
Weight	0.221 lb

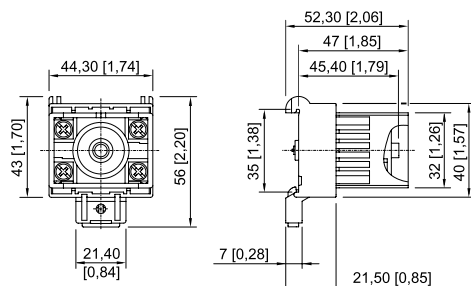
Mounting / Installation

Tightening torque lbf in	10.62 lbf in
Connection type	Screw terminal

Technical Drawings – Subject to Alterations



Dimensional Drawings (All Dimensions in mm [inches]) – Subject to Alterations



We reserve the right to make alterations to the technical data, dimensions, weights, designs and products available without notice. The illustrations cannot be considered binding.