

Lighting

LED portable lamp Complete set



6148/3111-111 Art. No. 268713



- Energy-saving, bright LED technology
- Approved in accordance with the relevant firefighting standard
- Lamp head pivots 190°
- Incredibly lightweight
- Main light continuously dimmable
- Long battery life
- Ergonomic one-hand operation

MY R. STAHL 6148A



The ergonomic design of the 6148 series portable LED lamp allows you to operate this lamp with just one hand. Its brightness can be freely adjusted; alternatively, it can be set to flashing mode. The pivoting lamp head allows you to direct the light cone virtually anywhere. Coloured diffusing lenses are available as accessories, and transform your lamp into a portable Ex beacon. It approved for use in vehicles, and when connected to the charging unit, has an emergency lighting function.

Technical Data

Explosion Protection

Ex version	Yes
Application range (zones)	1 2 21 22
IECEX gas certificate	IECEX IBE 11.0009
IECEX gas explosion protection	Ex ib IIC T4 Gb
IECEX dust certificate	IECEX IBE 11.0009
IECEX dust explosion protection	Ex tb IIIC T75 °C Db
ATEX gas certificate	IBExU 11ATEX 1066
ATEX gas explosion protection	⊕ II 2 G Ex ib IIC T4 Gb
ATEX dust certificate	IBExU 11ATEX 1066
ATEX dust explosion protection	⊕ II 2 D Ex tb IIIC T75 °C Db
Approval for motor vehicles	E1 10 R - 036569

Electrical Data

Rated operational voltage DC	12 ... 30 V
Battery version	Lead-fleece battery

Lighting Data

Number of lamps	2
Lamp	LED
Light colour	6500 K
Light intensity	40000 cd
Light distribution	In accordance with DIN 14642

Ambient Conditions

Ambient temperature	-20 °C ... +50 °C
Storage temperature	-25 °C ... +60 °C

Lighting

LED portable lamp Complete set



6148/3111-111 Art. No. 268713

Mechanical Data

Degree of protection (IP)	IP66
Class	II (double insulated)
Enclosure material	Polyamide, Impact resistant
Enclosure colour	Black
Silicone-free content	Contains silicone
Type of connection cable	Charging cable 12 to 30 V DC
Cable length	1.8 m
Width	92 mm
Height	143 mm
Length	279 mm
Headlamp head tilting function	Front: 100°, rear: 90°
Weight	1.9 kg
Weight	4.19 lb

Components

Plug	Free ends, 2-pole
Battery-Version	Lead-fleece battery, Maintenance-free, 6 V, 4.5 Ah

Accessories

Adaptor for external charging unit.

Art. No.



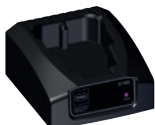
for charging the portable lamp in the KFZ90 or LG443 charging unit

212701

Spare Parts

Charging unit

Art. No.



for 6148 (12 – 30 V DC and 100 – 240 V AC)

209688

for 6148 (12 – 30 V DC and 100 – 240 V AC)

209688

We reserve the right to make alterations to the technical data, dimensions, weights, designs and products available without notice. The illustrations cannot be considered binding.