

8146/-052 Art. No. 269233



- Use as terminal or control box
- Corrosion-resistant, lightweight, low maintenance due to glass fibre reinforced polyester resin
- Can be combined with high distribution thanks to modular structure of the enclosure

MY R. STAHL 8146E



The R-STAHl Series 8146 Ex e enclosure offers reliable protection for the components installed in it for use as a terminal or control box. It is made of glass fibre reinforced polyester resin and is therefore robust, corrosion-resistant and needs very little maintenance. Thanks to its modular structure, you can combine it flexibly with larger units.

### Technical Data

#### Explosion Protection

|                                 |  |
|---------------------------------|--|
| Scope of validity               | European Union (ATEX)<br>IECEX   |
| Application range (zones)       | 1<br>2<br>21<br>22   |
| IECEX gas certificate           | IECEX PTB 06.0044U   |
| IECEX gas explosion protection  | Ex eb IIC Gb   |
| IECEX dust certificate          | IECEX PTB 06.0044U   |
| IECEX dust explosion protection | Ex tb IIIC Db  |
| ATEX gas certificate            | PTB 01 ATEX 1015 U   |
| ATEX gas explosion protection   | ⊕ II 2 G Ex eb IIC Gb  |
| ATEX dust certificate           | PTB 01 ATEX 1015 U   |
| ATEX dust explosion protection  | ⊕ II 2 D Ex tb IIIC Db   |
| Certificates                    | ATEX (PTB), IECEX (PTB)  |
| Notes                           | Product label may vary. Series devices have certification according to ATEX and IECEX. |

#### Ambient Conditions

|                     |  |
|---------------------|--|
| Ambient temperature | -60 °C ... +100 °C   |
| Ambient temperature | -76 °F ... +212 °F   |
| Storage temperature | The storage temperature corresponds to the ambient temperature |

#### Mechanical Data

|                                       |   |
|---------------------------------------|---|
| Degree of protection (IP) (IEC 60529) | IP66                                    |
| Enclosure material                    | Polyester resin, Glass fibre reinforced |
| Enclosure colour                      | Dark grey, similar to RAL 7024          |
| Flammability according to             | IEC/EN 60695<br>UL 94<br>ASTM D635      |
| Silicone-free                         | No                                      |

8146/-052 Art. No. 269233

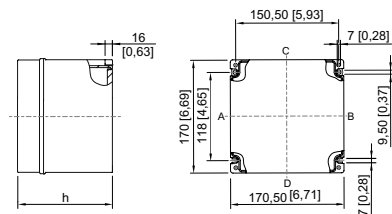
**Mechanical Data**

|                              |                     |
|------------------------------|---------------------|
| Cover fixing type            | With captive screws |
| Cover thickness              | 2.8 mm              |
| Cover thickness inch         | 0.11 in             |
| Wall thickness               | 2.8 mm              |
| Wall thickness, inches       | 0.11 in             |
| Width                        | 170 mm              |
| Width in inches              | 6.693 in            |
| Height                       | 170 mm              |
| Height, inches               | 6.693 in            |
| Depth                        | 131 mm              |
| Depth, inches                | 5.157 in            |
| Impact strength (IEC 60079)  | 7 J                 |
| Impact strength (IEC 62262)  | IK09                |
| Labelling                    | Without label       |
| Surface resistance EN60079-0 | 10 <sup>9</sup> Ω   |
| Packaging unit               | 1                   |
| Weight                       | 1.67 kg             |
| Weight                       | 3.68 lb             |

**Mounting / Installation**

|   |              |
|---|--------------|
| Tightening torque of cover screw 1        | 4.5 Nm       |
| Tightening torque of cover screw 1 lbf in | 39.83 lbf in |

**Dimensional Drawings (All Dimensions in mm [inches]) – Subject to Alterations**



8146/.05.  
8146/.051: h = 91 mm [3.58 inch]  
8146/.052: h = 131 mm [5.16 inch]

We reserve the right to make alterations to the technical data, dimensions, weights, designs and products available without notice. The illustrations cannot be considered binding.