

8146/-062 Art. No. 269234



- Use as terminal or control box
- Corrosion-resistant, lightweight, low maintenance due to glass fibre reinforced polyester resin
- Can be combined with high distribution thanks to modular structure of the enclosure

MY R. STAHL 8146E



The R-STAHl Series 8146 Ex e enclosure offers reliable protection for the components installed in it for use as a terminal or control box. It is made of glass fibre reinforced polyester resin and is therefore robust, corrosion-resistant and needs very little maintenance. Thanks to its modular structure, you can combine it flexibly with larger units.

Technical Data

Explosion Protection	
Scope of validity	European Union (ATEX) IECEX
Application range (zones)	1 2 21 22
IECEX gas certificate	IECEX PTB 06.0044U
IECEX gas explosion protection	Ex eb IIC Gb
IECEX dust certificate	IECEX PTB 06.0044U
IECEX dust explosion protection	Ex tb IIIC Db
ATEX gas certificate	PTB 01 ATEX 1015 U
ATEX gas explosion protection	⊕ II 2 G Ex eb IIC Gb
ATEX dust certificate	PTB 01 ATEX 1015 U
ATEX dust explosion protection	⊕ II 2 D Ex tb IIIC Db
Certificates	ATEX (PTB), IECEX (PTB)
Notes	Product label may vary. Series devices have certification according to ATEX and IECEX.
Ambient Conditions	
Ambient temperature	-60 °C ... +100 °C
Ambient temperature	-76 °F ... +212 °F
Storage temperature	The storage temperature corresponds to the ambient temperature
Mechanical Data	
Degree of protection (IP) (IEC 60529)	IP66
Enclosure material	Polyester resin, Glass fibre reinforced
Enclosure colour	Dark grey, similar to RAL 7024
Flammability according to	IEC/EN 60695 UL 94 ASTM D635
Silicone-free	No

8146/-062 Art. No. 269234

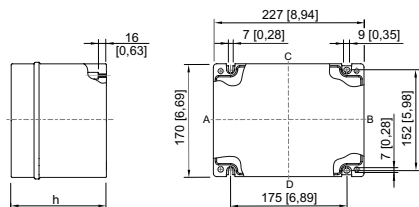
Mechanical Data

Cover fixing type	With captive screws
Cover thickness	2.8 mm
Cover thickness inch	0.11 in
Wall thickness	2.8 mm
Wall thickness, inches	0.11 in
Width	227 mm
Width in inches	8.937 in
Height	170 mm
Height, inches	6.693 in
Depth	131 mm
Depth, inches	5.157 in
Impact strength (IEC 60079)	7 J
Impact strength (IEC 62262)	IK09
Labelling	Without label
Surface resistance EN60079-0	10 ⁹ Ω
Packaging unit	1
Weight	2.13 kg
Weight	4.7 lb

Mounting / Installation

Tightening torque of cover screw 1	4.5 Nm
Tightening torque of cover screw 1 lbf in	39.83 lbf in

Dimensional Drawings (All Dimensions in mm [inches]) – Subject to Alterations



8146/.06.
8146/.061: h = 91 mm [3.58 inch]
8146/.062: h = 131 mm [5.16 inch]

We reserve the right to make alterations to the technical data, dimensions, weights, designs and products available without notice. The illustrations cannot be considered binding.