

## Control Devices

Control device for panel mounting

Ex e

8003/123-010S-6 Art. No. 269842



PanSiG



- Flexible configuration due to pushbutton, mushroom push-button, mushroom stay-put button, mushroom stay-put button with key lock, key-operated button, key-operated switch
- Easy assembly thanks to single-hole mounting (D 30)
- Codable "latching", "spring return", "key not removable" functions
- Plug-in connection with 6 m connection line

MY R. STAHL 8003E



R. STAHL Series 8003 control buttons and/or switches for panel mounting switch load, control and signal circuits up to 6 A. Depending on the type, they are complete or incomplete explosion-protected equipment with corresponding requirements for installation. As an option, various actuators are available.

### Technical Data

#### Explosion Protection

Scope of validity	European Union (ATEX) IECEX CCC
Application range (zones)	1 2 21 22
IECEX gas certificate	IECEX PTB 06.0065X
IECEX gas explosion protection	Ex db eb IIC T6 Gb
IECEX dust certificate	IECEX PTB 06.0065X
IECEX dust explosion protection	Ex tb IIIC T80 °C Db
ATEX gas certificate	PTB 02 ATEX 1057 X
ATEX gas explosion protection	⊕ II 2 G Ex db eb IIC T6 Gb
ATEX dust certificate	PTB 02 ATEX 1057 X
ATEX dust explosion protection	⊕ II 2 D Ex tb IIIC T80 °C Db
Certificates	ATEX (PTB), IECEX (PTB), Korea (KGS)
Declaration of Conformity	ATEX (EUK), China (CCC), Declaration of Conformity (ATEX)
Notes	Product label may vary. Series devices have certification according to ATEX and IECEX.

#### Electrical Data

Rated operational voltage AC	500 V
Rated operational current	6 A
Switching capacity AC-12	500 V / 6 A / max. 3000 VA
Switching capacity AC-15	400 V / 6 A / max. 1250 VA
Switching capacity DC-13	110 V / 1 A / max. 110 W
Switching capacity DC-13<SoftReturn/>2 contact elements in series	60 V/6 A

#### Ambient Conditions

Ambient temperature	-55 °C ... +60 °C
---------------------	-------------------

# Control Devices

Control device for panel mounting

Ex e

8003/123-010S-6 Art. No. 269842



## Ambient Conditions

Ambient temperature -67 °F ... +140 °F

## Mechanical Data

Degree of protection (IP) (IEC 60529) Reverse side IP65, front side IP66

Enclosure material Polyamide

Contact material Silver-nickel

Silicone-free No

Number of NCs 2

Conductor length 6 m

Conductor length, inches 236.22 in

Connection cross-section 0.75 ... 1.5 mm<sup>2</sup>

Connection cross-section AWG 20 AWG ... 14 AWG

Type of connection cable ÖLFLEX 4x1 mm<sup>2</sup>

Depth of cut-out 130 mm

Mounting depth, inches 5.12 in

Service life, min. 10<sup>5</sup> operating cycles

Weight 125 g

Weight 0.28 lb

## Mounting / Installation

Tightening torque 3 Nm

Tightening torque lbf in 26.55 lbf in

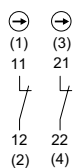
## Components

Actuator Mushroom stay-put button EM-STOP

Entry 1 8161/7-M16-0902

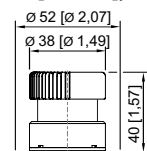
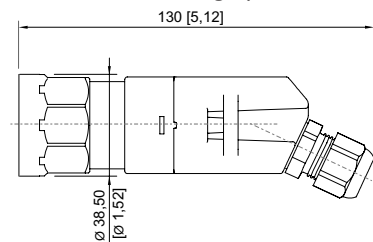
Entry 1 type Polyamide cable gland, black

## Technical Drawings – Subject to Alterations

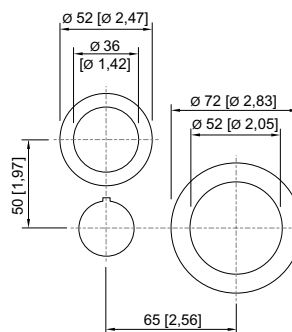


Schematic 8003/123  
NC positive opening  
Numbers in brackets according to core identification

## Dimensional Drawings (All Dimensions in mm [inches]) – Subject to Alterations



8003/...-010, 8003/...-012 Mushroom stay-put button  
Ø 38 mm



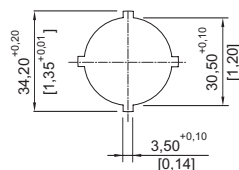
8003/...-009, 8003/...-010, 8003/...-015  
Cut-out for EMERGENCY-STOP button

# Control Devices

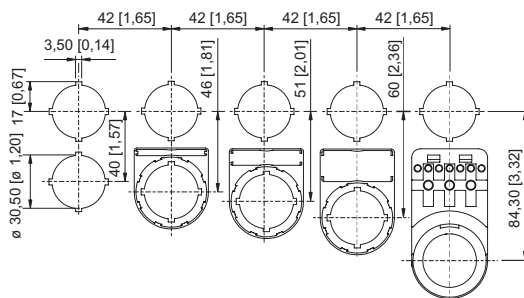
Control device for panel mounting

Ex e

8003/123-010S-6 Art. No. 269842



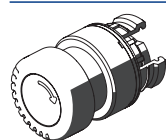
Cut-out details



Cut-out with/without additional designation plate

## Accessories

### Actuators



Mushroom stay-put button EM-STOP

Art. No.

261756

### Protective collar



8602A0751 metal  
for pushbutton/selector switch/mushroom stay-put button with key lock/mushroom stay-put button/mushroom pushbutton dia. 39  
BG001, BG003, BG005, BG008, BG009, BG010, BG012

Art. No.

155326

## Spare Parts

### Label mount



Label mount, size 1, without symbol label  
Text: 1 line  
for actuators to fit Ø 30.5 mm holes

Art. No.

155632



Label mount, size 2, without symbol label  
Text: 1 or 2 lines  
for actuators to fit Ø 30.5 mm holes

Art. No.

155687



Label mount, size 3, without symbol label  
Text: 1, 2 or 3 lines  
for actuators to fit Ø 30.5 mm holes

Art. No.

155844

### Label, yellow, general



for Ø 39 actuator (EM-STOP)

Art. No.

223571

# Control Devices

Control device for panel mounting

Ex e

8003/123-010S-6 Art. No. 269842



## Symbol label for pushbutton and selector switch

Art. No.



Colour: red  
Symbol: Arrow

155567

## Insert discs for label holder

Art. No.



One-line  
Plain  
Material: PVC  
Colour: White  
Self-adhesive

238271



Two-line  
Plain  
Material: PVC  
Colour: White  
Self-adhesive

238272



Three-line  
Plain  
Material: PVC  
Colour: White  
Self-adhesive

238273

We reserve the right to make alterations to the technical data, dimensions, weights, designs and products available without notice. The illustrations cannot be considered binding.