

Control Devices

Control device for panel mounting

Ex e

8003/121-012S Art. No. 269847



- Flexible configuration due to pushbutton, mushroom push-button, mushroom stay-put button, mushroom stay-put button with key lock, key-operated button, key-operated switch
- Easy assembly thanks to single-hole mounting
- Codable "latching", "spring return", "key not removable" functions
- Spring clamp terminals with connection chamber

MY R. STAHL 8003B



The switches and control buttons for R. STAHL series 8003 panel mounting devices have various switching functions in latching and spring return versions, which can be subsequently recoded, up to 6 A. They are completely certified, explosion-protected equipment with Ex e connection chambers. With the patented mounting mechanism, panel mounting with normal drilled holes of 30.5 mm is quick and easy.

The right actuators are available for a comprehensive range of applications.

Technical Data

Explosion Protection

| | |
|---------------------------------|--|
| Scope of validity | European Union (ATEX) IECEX CCC |
| Application range (zones) | 1 2 21 22 |
| IECEX gas certificate | IECEX PTB 06.0065X |
| IECEX gas explosion protection | Ex db eb IIC T6 Gb |
| IECEX dust certificate | IECEX PTB 06.0065X |
| IECEX dust explosion protection | Ex tb IIIC T80 °C Db |
| ATEX gas certificate | PTB 02 ATEX 1057 X |
| ATEX gas explosion protection | ⊕ II 2 G Ex db eb IIC T6 Gb |
| ATEX dust certificate | PTB 02 ATEX 1057 X |
| ATEX dust explosion protection | ⊕ II 2 D Ex tb IIIC T80 °C Db |
| Certificates | ATEX (PTB), IECEX (PTB), Korea (KGS) |
| Declaration of Conformity | ATEX (EUK), China (CCC), Declaration of Conformity (ATEX) |
| Notes | Product label may vary. Series devices have certification according to ATEX and IECEX. |

Electrical Data

| | |
|---|----------------------------|
| Rated operational voltage AC | 500 V |
| Rated operational current | 6 A |
| Switching capacity AC-12 | 500 V / 6 A / max. 3000 VA |
| Switching capacity AC-15 | 400 V / 6 A / max. 1250 VA |
| Switching capacity DC-13 | 110 V / 1 A / max. 110 W |
| Switching capacity DC-13<SoftReturn/>2 contact elements in series | 60 V/6 A |

Control Devices

Control device for panel mounting

Ex e

8003/121-012S Art. No. 269847



Ambient Conditions

| | |
|---------------------|--------------------|
| Ambient temperature | -55 °C ... +60 °C |
| Ambient temperature | -67 °F ... +140 °F |

Mechanical Data

| | |
|---------------------------------------|------------------------------------|
| Degree of protection (IP) (IEC 60529) | Reverse side IP65, front side IP66 |
| Enclosure material | Polyamide |
| Contact material | Silver-nickel |
| Silicone-free | No |
| Number of NCs | 2 |
| Connection cross-section | 0.75 ... 1.5 mm ² |
| Connection cross-section AWG | 18 AWG ... 12 AWG |
| Depth of cut-out | 130 mm |
| Mounting depth, inches | 5.12 in |
| Service life, min. | 10 ⁸ operating cycles |
| Weight | 125 g |
| Weight | 0.28 lb |

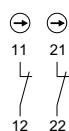
Mounting / Installation

| | |
|--------------------------|--------------|
| Tightening torque | 3 Nm |
| Tightening torque lbf in | 26.55 lbf in |

Components

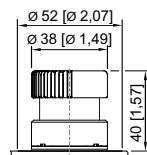
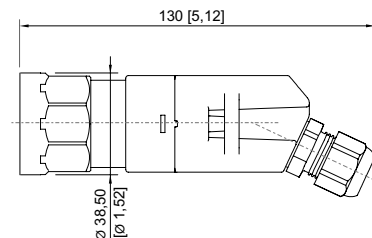
| | |
|--------------|------------------------------|
| Actuator | Mushroom stay-put button |
| Entry 1 | 8161/7-M16-0902 |
| Entry 1 type | Polyamide cable gland, black |

Technical Drawings – Subject to Alterations

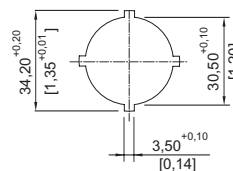


Schematic 8003/12.
NC positive opening

Dimensional Drawings (All Dimensions in mm [inches]) – Subject to Alterations



8003/...-010, 8003/...-012 Mushroom stay-put button
Ø 38 mm



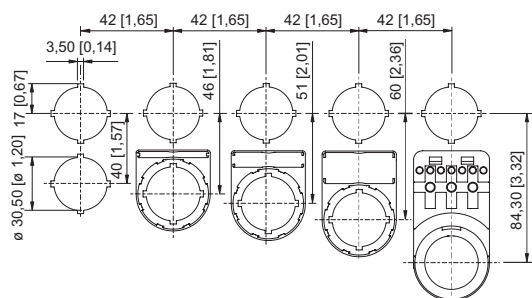
Cut-out details

Control Devices

Control device for panel mounting

Ex e

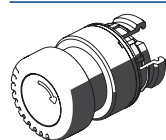
8003/121-012S Art. No. 269847



Cut-out with/without additional designation plate

Accessories

Actuator



Mushroom stay-put buttons Ø 38 mm, black

Art. No.

155541

Protective collar



8602A0751 metal
for pushbutton/selector switch/mushroom stay-put button with key lock/mushroom stay-put button/mushroom pushbutton dia. 39
BG001, BG003, BG005, BG008, BG009, BG010, BG012

Art. No.

155326

Spare Parts

Label mount



Label mount, size 1, without symbol label
Text: 1 line
for actuators to fit Ø 30.5 mm holes

Art. No.

155632



Label mount, size 2, without symbol label
Text: 1 or 2 lines
for actuators to fit Ø 30.5 mm holes

Art. No.

155687



Label mount, size 3, without symbol label
Text: 1, 2 or 3 lines
for actuators to fit Ø 30.5 mm holes

Art. No.

155844

Symbol label for pushbutton and selector switch



Colour: red
Symbol: Arrow

Art. No.

155567

Control Devices

Control device for panel mounting




Ex e

8003/121-012S Art. No. 269847




Insert discs for label holder

Art. No.

| | | |
|--|--|--------|
|  | One-line Plain Material: PVC Colour: White Self-adhesive | 238271 |
|  | Two-line Plain Material: PVC Colour: White Self-adhesive | 238272 |
|  | Three-line Plain Material: PVC Colour: White Self-adhesive | 238273 |

Closing part

Art. No.

| | | |
|---|---|--------|
|  | 8602C3-733-B for closing unused holes in cover, dia. 30.5 mm, NBR | 244306 |
| | 8602C3-733-S for closing unused holes in cover, dia. 30.5 mm, silicone | 244307 |

We reserve the right to make alterations to the technical data, dimensions, weights, designs and products available without notice. The illustrations cannot be considered binding.