

# Control Devices

Control device for panel mounting

Ex e

8003/113-008-2-r-MS1-6 Art. No. 269849



- Flexible configuration due to pushbutton, mushroom push-button, mushroom stay-put button, mushroom stay-put button with key lock, key-operated button, key-operated switch
- Easy assembly thanks to single-hole mounting (D 30)
- Codable "latching", "spring return", "key not removable" functions
- Plug-in connection with 6 m connection line

MY R. STAHL 8003E



R. STAHL Series 8003 control buttons and/or switches for panel mounting switch load, control and signal circuits up to 6 A. Depending on the type, they are complete or incomplete explosion-protected equipment with corresponding requirements for installation. As an option, various actuators are available.

## Technical Data

### Explosion Protection

Scope of validity	European Union (ATEX) IECEX CCC
Application range (zones)	1 2 21 22
IECEX gas certificate	IECEX PTB 06.0065X
IECEX gas explosion protection	Ex db eb IIC T6 Gb
IECEX dust certificate	IECEX PTB 06.0065X
IECEX dust explosion protection	Ex tb IIIC T80 °C Db
ATEX gas certificate	PTB 02 ATEX 1057 X
ATEX gas explosion protection	⊕ II 2 G Ex db eb IIC T6 Gb
ATEX dust certificate	PTB 02 ATEX 1057 X
ATEX dust explosion protection	⊕ II 2 D Ex tb IIIC T80 °C Db
Certificates	ATEX (PTB), IECEX (PTB), Korea (KGS)
Declaration of Conformity	ATEX (EUK), China (CCC), Declaration of Conformity (ATEX)
Notes	Product label may vary. Series devices have certification according to ATEX and IECEX.

### Electrical Data

Rated operational voltage AC	500 V
Rated operational current	6 A
Switching capacity AC-12	500 V / 6 A / max. 3000 VA
Switching capacity AC-15	400 V / 6 A / max. 1250 VA
Switching capacity DC-13	110 V / 1 A / max. 110 W
Switching capacity DC-13<SoftReturn/>2 contact elements in series	60 V/6 A

### Ambient Conditions

Ambient temperature	-20 °C ... +60 °C
---------------------	-------------------

# Control Devices

Control device for panel mounting

Ex e

8003/113-008-2-r-MS1-6 Art. No. 269849



## Ambient Conditions

Ambient temperature -4 °F ... +140 °F

## Mechanical Data

Degree of protection (IP) (IEC 60529) Reverse side IP65, front side IP66

Enclosure material Polyamide

Contact material Silver-nickel

Silicone-free Yes

Number of NCs 1

Number of NOs 1

Number of switching positions 2

Conductor length 6 m

Conductor length, inches 236.22 in

Connection cross-section 0.75 ... 1.5 mm<sup>2</sup>

Connection cross-section AWG 20 AWG ... 14 AWG

Type of connection cable ÖLFLEX 4x1 mm<sup>2</sup>

Depth of cut-out 130 mm

Mounting depth, inches 5.12 in

Service life, min. 10<sup>5</sup> operating cycles

Weight 125 g

Weight 0.28 lb

## Mounting / Installation

Tightening torque 3 Nm

Tightening torque lbf in 26.55 lbf in

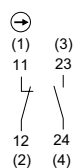
## Components

Actuator Key-operated switch actuator With key actuator MS1

Entry 1 8161/7-M16-0902

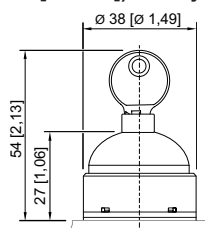
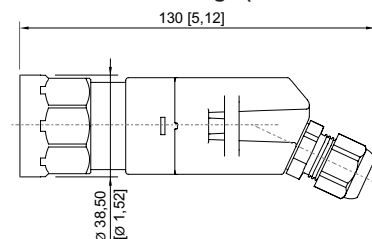
Entry 1 type Polyamide cable gland, black

## Technical Drawings – Subject to Alterations

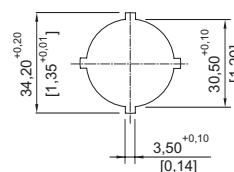


Schematic 8003/113  
NO / NC positive opening  
Numbers in brackets according to core identification

## Dimensional Drawings (All Dimensions in mm [inches]) – Subject to Alterations



8003/...-008 Key switch



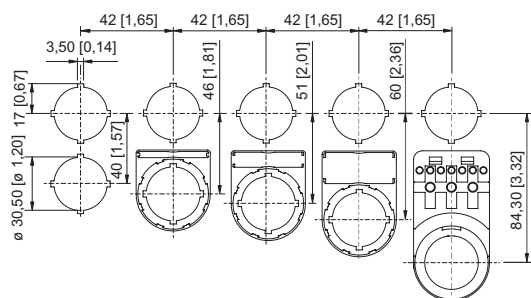
Cut-out details

# Control Devices

Control device for panel mounting

Ex e

8003/113-008-2-r-MS1-6 Art. No. 269849



Cut-out with/without additional designation plate

## Accessories

### Protective collar



8602A0751 metal  
for pushbutton/selector switch/mushroom stay-put button with key lock/mushroom stay-put button/mushroom pushbutton dia. 39  
BG001, BG003, BG005, BG008, BG009, BG010, BG012

Art. No.

155326

### Spare key



Closing MS1

Art. No.

107109

## Spare Parts

### Label mount



Label mount, size 1, without symbol label  
Text: 1 line  
for actuators to fit Ø 30.5 mm holes

Art. No.

155632



Label mount, size 2, without symbol label  
Text: 1 or 2 lines  
for actuators to fit Ø 30.5 mm holes

Art. No.

155687



Label mount, size 3, without symbol label  
Text: 1, 2 or 3 lines  
for actuators to fit Ø 30.5 mm holes

Art. No.

155844

### Insert discs for label holder



One-line  
Plain  
Material: PVC  
Colour: White  
Self-adhesive

Art. No.

238271



## Control Devices

Control device for panel mounting

Ex e

8003/113-008-2-r-MS1-6 Art. No. 269849



	Two-line Plain Material: PVC Colour: White Self-adhesive	238272
	Three-line Plain Material: PVC Colour: White Self-adhesive	238273

### Coding kit for key-operated switch

Art. No.

	Coding element, 1 x red, 1 x yellow	155403
	Coding element, 1 x green, 1 x red	155432
	Coding element, 2 x yellow	155373

We reserve the right to make alterations to the technical data, dimensions, weights, designs and products available without notice. The illustrations cannot be considered binding.