

Enclosures

Overload protection

20 - 80 A

8550/1-OL-GLS3-E10-80-95-11 Art. No. 283722



- Modular component for overload monitoring of motors up to 37 kW / 50 hp at 400/480 V
- The electronic relay is sensitive to a fluctuating ambient temperature
- Large clamping range for main terminals
- Tripping class E5, E10, E20 and E30 can be selected via type code
- Integrated earth protection
- Greater adjustment range of the overload trigger from 20 to 80 A
- Integrated reset button and electronic reset via 24 V DC control

WebCode 8550B



The electronic overload relay for R. STAHL's 8550 series is a component for load current monitoring of motors. It reliably reports an overload and safely shuts off the motor using a contactor. Together with the moulded case circuit breaker in the same series which is also available, these three components form a motor starter which reliably control powers up to 37 kW / 50 hp at 400 or 480 V (other powers available on request). Earth fault protection is also integrated, meaning that Ex d and Ex e motors are safely protected at all points. The broad adjustment range of the overload current optimises the variety of versions. Resetting in case of error is either done manually on the unit on-site via the integrated reset button, or electrically via the control system.

Technical Data

Explosion Protection

Application range (Zones)	1 2
Application range (Zone) note	For use in Zone 21/22 when protected by Ex tb/tc enclosure
IECEX gas certificate	IECEX FMG 22.0005U
IECEX gas explosion protection	Ex db eb IIC Gb
ATEX gas certificate	FM 22 ATEX 0017 U
ATEX gas explosion protection	Ex II 2 G Ex db eb IIC Gb
FMus certificate	FM22US0011U
cFM certificate	FM22CA0006U
Marking FMus	Class I, Div. 2, Groups A,B,C,D; Class I, Zone 1, AEx IIC Gb
Marking cFM	Class I, Div. 2, Groups A,B,C,D; Class I, Zone 1, Ex db eb IIC Gb
Certificates	ATEX (FM), Canada (FM), IECEX (FM), USA (FM)

Electrical Data

Trigger class	Class E10
Rated operational voltage	690 V
Rated operational current	20 – 80 A
Frequency	50 ... 60 Hz
Main contacts	3-pole
Auxiliary contacts	2 (1 NO + 1 NC)

Ambient Conditions

Ambient temperature °C	-25 °C ... +60 °C
Ambient temperature °F	-13 °F ... +140 °F

Enclosures

Overload protection

20 - 80 A

8550/1-OL-GLS3-E10-80-95-11 Art. No. 283722



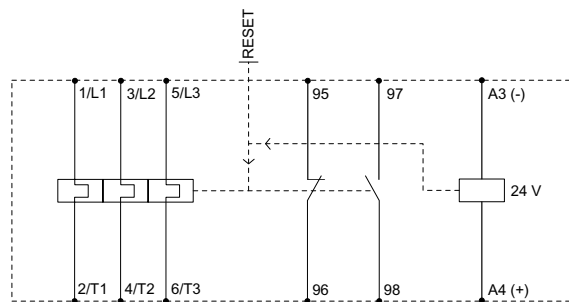
Mechanical Data

Degree of protection (IP)	IP20
Enclosure material	Thermoplast
Connection cross-section	25 – 95 mm ²
Connection cross-section AWG	4 to 4/0 AWG
Auxiliary contact connection cross section	0.75 ... 2.5 mm ²
Auxiliary contact connection cross section AWG	18 ... 14 AWG
Width	150 mm
Width in inches	5.91 in
Height	196 mm
Height, inches	7.72 in
Depth	336.6 mm
Depth, inches	13.25 in
Weight	4 kg
Weight	8.82 lb

Mounting / Installation

Tightening torque	15 – 20 Nm
Tightening torque lbf in	132 to 177 lbf in
Tightening torque auxiliary contact	0.4 – 0.6 Nm
Tightening torque auxiliary contact lbf in	3.54 ... 5.31 lbf-in

Technical Drawings – Subject to Alterations



Circuit diagram of the device

Enclosures

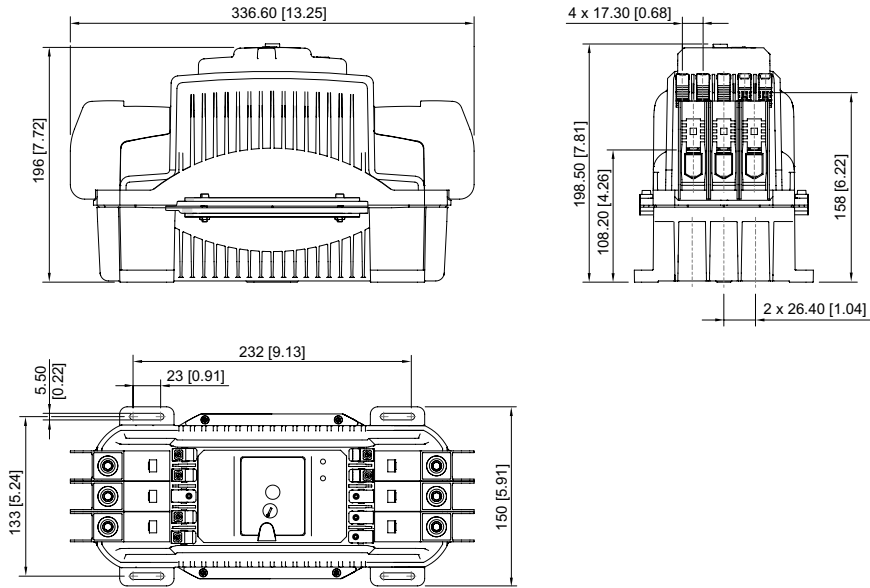
Overload protection

20 - 80 A

8550/1-OL-GLS3-E10-80-95-11 Art. No. 283722



Dimensional Drawings (All Dimensions in mm [inches]) – Subject to Alterations



We reserve the right to make alterations to the technical data, dimensions, weights, designs and products available without notice. The illustrations cannot be considered binding.