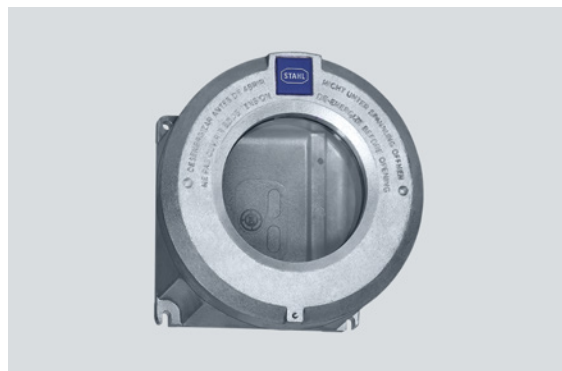


8265/61-0020 Art. No. 211089



- Six basic enclosure sizes, optional inspection windows
- International certification, wide temperature range, seawater-resistant light-metal enclosure
- Empty enclosure
- Custom entries available upon request
- For use in Class I, Div. 1 & 2

### MY R. STAHL 8265K



R. STAHL series 8265 are explosionproof and dust-ignitionproof empty enclosures globally certified. The large cover opening allows easier access for mounting and maintenance of components within the enclosure. The cover is also available with a window. R. STAHL can install various equipment in the enclosure including arc and sparking components according to customer requirements. Check with your R. STAHL representative to see if your specified equipment can be mounted in the enclosure.

## Technical Data

### Explosion Protection

Application range (Zones)	1 2 21 22
IECEX gas certificate	IECEX PTB 07.0027 U
IECEX gas explosion protection	Ex db eb IIC Gb
IECEX dust certificate	IECEX PTB 07.0027 U
IECEX dust explosion protection	Ex tb IIIC Db
ATEX gas certificate	PTB 06 ATEX 1023 U
ATEX gas explosion protection	Ex II 2 G Ex db eb IIC Gb
ATEX dust certificate	PTB 06 ATEX 1023 U
ATEX dust explosion protection	Ex II 2 D Ex tb IIIC Db
Certificate ULus	E307783
Marking ULus	Class I, Div. 1, Groups A,B,C,D Class II,III, Div. 1, E, F, G Class I, Zone 1, Group IIC Enclosure Type 3, 4, 4X
Certificate cUL	E114097
Marking cUL	Class I, Zone 1, Group IIC Class I, Div. 1, Groups A,B,C,D Class II,III, Div. 1, E, F, G Enclosure Type 3, 4, 4X
Marking Notes	also for installation in Class I, II & III, Div. 2
Certificates	ATEX (PTB), Canada (UL), IECEX (PTB), USA (UL)

### Ambient Conditions

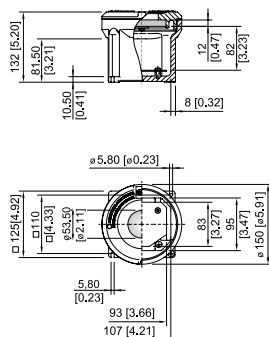
Ambient temperature °C	-50 °C ... +50 °C
Ambient temperature °F	-58 °F ... +122 °F

8265/61-0020 Art. No. 211089

### Mechanical Data

Degree of protection (IP)	IP54
Degree of protection note	IP66 with O-ring silicone
Enclosure type (NEMA250)	3, 4, 4X
Enclosure material	Aluminium, copper-free, Seawater-resistant
Enclosure color	without
Clamping range max.	95 mm <sup>2</sup>
Cover	With inspection window
Version	Without entry
Width	125 mm
Width in inches	4.92 in
Height	132 mm
Height, inches	5.2 in
Length	125 mm
Length, inches	4.92 in
Diameter	150 mm
Diameter inch	5.91 in
Enclosure size	1
Weight	2.79 kg
Weight	6.14 lb

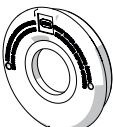
### Dimensional Drawings (All Dimensions in mm [inches]) – Subject to Alterations



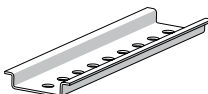
Enclosure size 1 with inspection window

### Accessories

#### Threaded cover with window

	Enclosure: 8265/61-0020 viewable diameter of the window Ø 56 mm [2.2 in]	<b>Art. No.</b> 211039
--	---	---------------------------

#### Mounting rail

	TS35 length: 80 mm [3.15 in] for enclosure size 1	<b>Art. No.</b> 212424
--	--	---------------------------

# Components for System Solutions

## Empty enclosure



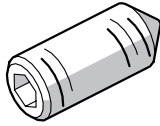
8265/61-0020 Art. No. 211089

	TS15 length: 80 mm [3.15 in] for enclosure size 1	212425
--	--	--------

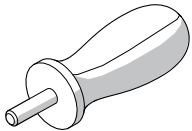
### Mounting plate for 8265 GUB size 1

	for enclosure size 1 M5 x 8 screws are included.	<b>Art. No.</b> 316167
--	---	---------------------------

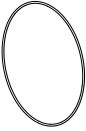
### Set screw

	M5 x 16 mm, stainless steel Allen screw with point to secure the cover	<b>Art. No.</b> 110216
--	---	---------------------------

### Handle

	to open the enclosure cover for size 1, 2, 3, 4 2 handles are required	<b>Art. No.</b> 142059
---	---	---------------------------

## Spare Parts

	silicone, for enclosure size 1	<b>Art. No.</b> 305498
--	--------------------------------	---------------------------

We reserve the right to make alterations to the technical data, dimensions, weights, designs and products available without notice. The illustrations cannot be considered binding.