

THE STRONGEST LINK.

STAHL

SAFETY IN THE BOX

The Series 8250 Ex d enclosure for terminal boxes and local control stations.

EX D ENCLOSURES FOR ALL NEEDS

Adding to our already market-leading CUBEx enclosures for compact systems and combinations, we now present our new and versatile range of 8250 direct entry Ex d enclosures. They offer exceptional safety by confining any possible explosion within the enclosure itself, thereby protecting workers, assets and the environment from damage. Consequently they're the most popular form of explosion protection in the market, able to cover a multitude of power and control solutions.

The R. STAHL Series 8250 enclosure is certified for universal use as a terminal box or local control station. Available in various sizes and with many different equipment options, it's perfect for any application. And thanks to our speedy production line, we're able to quickly fulfil all orders at any volume. Whatever you do, wherever you are.



EXPLOSION PROTECTION

Local Control Stations Series 8250/5

ATEX

Gas and dust

- ⊕ II 2 G Ex db IIB+H2 T6... T4 Gb
- ⊕ II (1)2 G Ex db [ia Ga] [ib] IIB+H2 T6... T4 Gb
- ⊕ II 2 D Ex tb IIIC T80 °C... T130 °C Db
- ⊕ II (1)2 D Ex tb [ia Da] [ib] IIIC T80 °C... T130 °C Db

IECEX

Gas and dust

- Ex db IIB+H2 T6... T4 Gb
- Ex db [ia Ga] [ib] IIB+H2 T6... T4 Gb
- Ex tb IIIC T80 °C... T130 °C Db
- Ex tb [ia Da] [ib] IIIC T80 °C... T130 °C Db

Terminal Boxes Series 8250/1

ATEX

Gas and dust

- ⊕ II 2 G Ex db IIB+H2 T6... T4 Gb
- ⊕ II 2 G Ex db ia ib IIB+H2 T6... T4 Gb
- ⊕ II 2 D Ex tb IIIC T80 °C... T130 °C Db
- ⊕ II 2 D Ex tb ia ib IIIC T80 °C... T130 °C Db

IECEX

Gas and dust

- Ex tb IIIC T80 °C... T130 °C Db
- Ex tb IIIC T80 °C... T130 °C Db
- Ex tb IIIC T80 °C... T130 °C Db
- Ex tb IIIC T80 °C... T130 °C Db

WebCode 8250A

ATEX IECEx TR CU* PESO

IIB + H2

IP66

- 60 °C
+ 70 °C

Light and compact

Cost-effective

Hinges can also be attached on the side

Surfaces protected by powder-coated finish, RAL7035 (other paint options available)

Customisable hinges (can be added later)

Lid securely lockable with unloseable A80 Allen key

Lid can be outfitted with control devices

Large aperture angle for easy access and fast operation

Saltwater resistant aluminium alloy AISi7Mg0.3

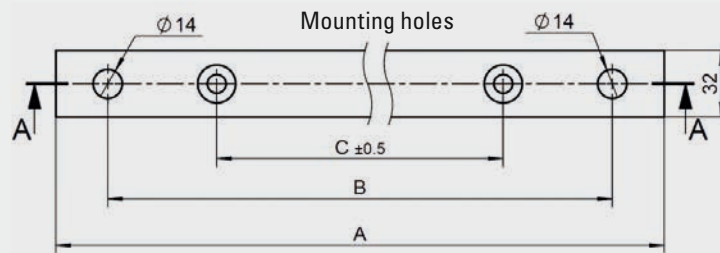
Enclosure ready for cable and wire inlets

Dimensions

Profit from minimal storage costs with our five standardised sizes of empty enclosures for the most frequently requested applications.

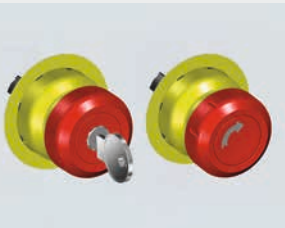
Size	Inside dimensions (LxWxD) mm	Outside dimensions (LxWxD) mm	Internal volume (dm ³)	A/mm	B/mm	C/mm	Weight/kg ea
1	250 x 150 x 110	324.93 x 224.93 x 134.5	4.12	285	250	150	7.22
2	300 x 230 x 125	297.93 x 367.93 x 152.5	8.62	360	325	230	11.66
3	370 x 300 x 160	444.93 x 374.93 x 187	17.76	450	400	300	18.71
4	540 x 230 x 230	623.93 x 313.93 x 257	28.56	375	325	220	28.34
5	540 x 360 x 300	628.5 x 448.5 x 334	58.32	495	460	340	48.00

Wall-mounting rail



Accessories

Pressure-resistant enclosures by R. STAHL aren't just safe and convenient, but also come with a range of accessories that help you get exactly the features you need.



ACTUATORS

Large selection of actuators e.g. pushbuttons, key-operated switches, mushroom stay-put buttons.



INDICATOR LAMPS

R. STAHL LED technology promises extremely long service life, high luminance and low heat build-up.



CABLE GLANDS

Their modular design makes them incredibly versatile, meaning that a suitable configuration can be obtained for any type of cable construction.

